



CW MILL EQUIPMENT CO., INC.
P.O. Box 246 • Sabetha, Kansas 66534
(785) 284-3454 • FAX (785) 284-3601

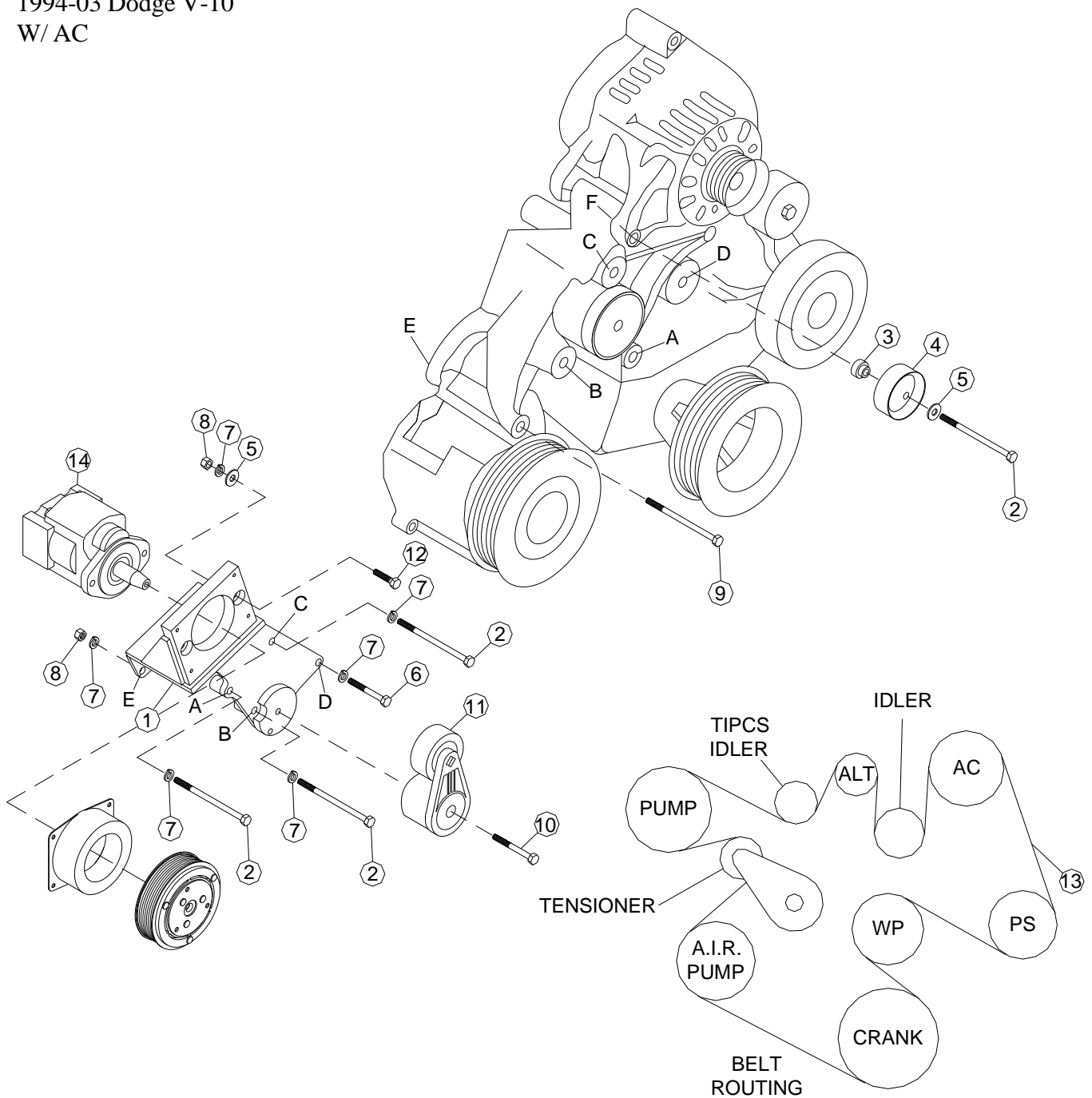
DMK62A-I8
1994-03 Dodge V-10
W/ AC

-
1. Disconnect the negative battery cable. Remove O.E.M. belt. Remove O.E.M. tensioner. Remove bolt from A.I.R. pump at location "E". Remove bolt from location "D".
 2. Install bracket (1) using bolts (2) and lockwashers (7) into bracket locations "A", "B", and "C". Use bolt (6) and lockwasher (7) in bracket location "D". Install bolt (9) into A.I.R. pump at location "E" and fasten with nut (8) and lockwasher (7) on backside of bracket. Tighten all bolts securely. Remove O.E.M. bolt from alternator at location "F". Attach idler (4) to alternator in location "F" using bolt (2), flatwasher (5), and spacer (3).
 3. Install tensioner (11) with bolt (10). Install clutch pump (14) with bolts (12), flatwashers (5), lockwashers (7) and nuts (8). Tighten bolts securely. Install clutch and coil per manufacturer's instructions. Install new belt (13) according to belt diagram.

DMK62A-I8

1994-03 Dodge V-10

W/ AC



PARTS LIST

- | | |
|----------------------------|-----------------------------------|
| 1. DMB62A (1) | 8. 3/8-16 Nut (3) |
| 2. 3/8-16 X 5-1/2 Bolt (4) | 9. 3/8-16 x 5-1/2 SP (1) |
| 3. DMB621 (1) | 10. 3/8-16 x 2-1/4 Bolt (1) |
| 4. TIPCS (1) | 11. 89203 TIPCS (1) |
| 5. 3/8 FW (3) | 12. 3/8 x 1 1/2 NC (2) |
| 6. 3/8-16 x 2-1/2 Bolt (1) | 13. 5071325 Dayco Belt (1) |
| 7. 3/8 LW (7) | 14. Clutch Pump (Sold Separately) |