



CW MILL EQUIPMENT CO., INC.  
P.O. Box 246 • Sabetha, Kansas 66534  
(785) 284-3454 • FAX (785) 284-3601

**FLMK 79-I8**  
1999-02  
5.9 Cummins 24 Valve

## INSTALLATION NOTES

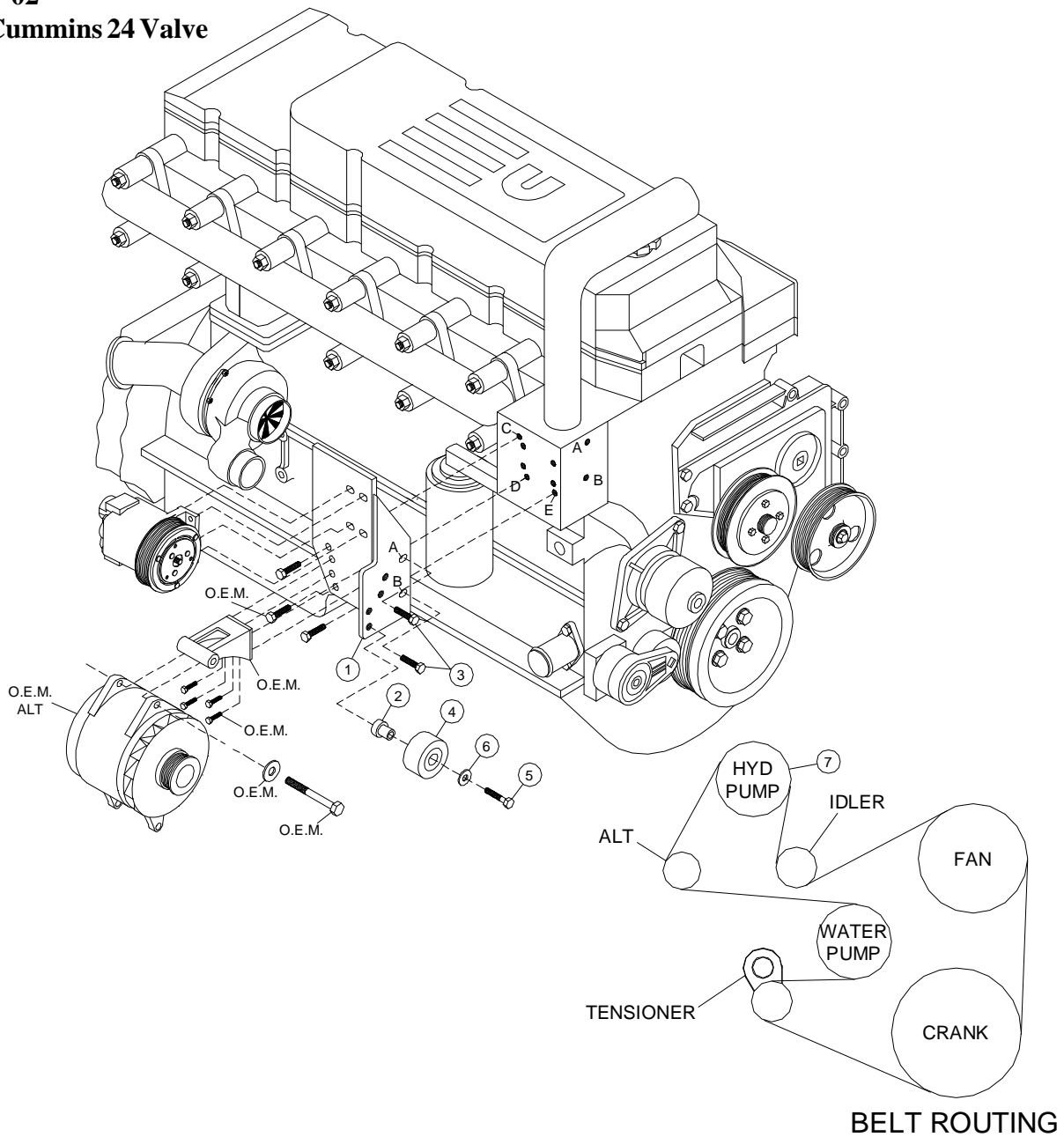
---

1. Disconnect the negative battery cable. Remove the serpentine belt. Loosen the top and bottom alternator bolt. Remove the upper alternator bracket and engine lifting lug. The engine lifting lug will not be reused.
2. Install the main bracket (1) onto the engine with bolts (3) on the front of the bracket, and O.E.M. bolts with through the holes on the side of the bracket. Tighten bolts finger tight only at this time. Install the OEM alternator bracket reusing the OEM bolts. Tighten all bolts evenly and securely. Install the OEM upper alternator bolt and tighten.
3. Install the clutch pump with bolts provided in kit. Align clutch with O.E.M. pulleys. Install the new serpentine belt (7) according to the belt diagram. Load the tensioner and install the idler (4) using bolt (5), flatwasher (6) and bushing (2) into the lowest possible hole. Release the belt tensioner.
4. Reconnect the battery. Run the engine and check for proper belt tracking and alignment.

# FLMK 79-I8

1999-02

5.9 Cummins 24 Valve



## PARTS LIST

- 1. FLMP 79(0-4) (1)
- 2. FLMB 791 (1)
- 3. 8mm x 30mm Flange (2)
- 4. IPCD 3.0 (1)

- 5. 12mm x 55mm Bolt (1)
- 6. 12mm Flatwasher (1)
- 7. Dayco 5080895 (1)