



FMK 39ASB-8 Belt
1999-04 Ford Truck F-250-550
1997-16 Ford Van E-250-450
5.4 L Triton, W-WO/AC

NOTE: ON 2008 AND NEWER 5.4 IT IS THE INSTALLERS RESPONSIBILITY TO PURCHASE NEW BALANCER WITH HOLES FROM FORD PART#7L3Z-6312-A

INSTALLATION NOTES

1. Disconnect the negative battery cable. On E-series remove the complete air cleaner assembly. Remove the fan and fan shroud. (Fan nut has right hand threads). Remove the O.E.M. serpentine belt and the flat idler on the passenger side of the engine. Remove the studs at locations "A & D" and install studs (5) with flat washers (6). Torque studs to 35-40 ft/lbs. Remove bolts at locations "B & C".
2. Install the pump onto the backside of bracket (4) with bolts (17), flat washers (18), lock washers (19) and nuts (20). Tighten securely. Install the pump and bracket assembly onto the studs at locations "A & D". Install bolts (7) with lock washers (8) at locations "B & C" and nuts (9) with lock washers (8) at locations "A & D". Tighten bolts and nuts evenly, then torque to 35-40 ft/lbs.
3. Install the O.E.M. idler back to it's original location, and install the O.E.M. belt. Install the pump belt tensioner (10) with bolt (11) and the grooved idler (13), with bushing (12), flat washer (14) and bolt (15).
4. Install the drive adapter (2) onto the damper with bolts (3), torque bolts to 40-45 ft/lbs. Install the belt onto the pulley with the belt on the inside of the legs at locations "E & F", and over the leg at location "G". Slide the pulley over the O.E.M. studs at locations "E & F", making sure the drive pins are in the nylon bushings. All three legs should touch their mounting locations without using the bolt or nuts to pull it on. Torque bolt (16) and nuts (9) to 35-40 ft/lbs. Install the pump drive belt.
5. Install the fan, fan shroud, and air cleaner assembly if removed. Reconnect the battery cable. Run the engine to make certain the belt is tracking properly.

CAUTION: Check all engine compartment hoses and wiring to insure they are not kinked, touching any high temperature item, or do not interfere with any linkage components.

NOTE: Due to OEM assembly tolerances, visually make certain that there is adequate clearance between fan and drive pulley.

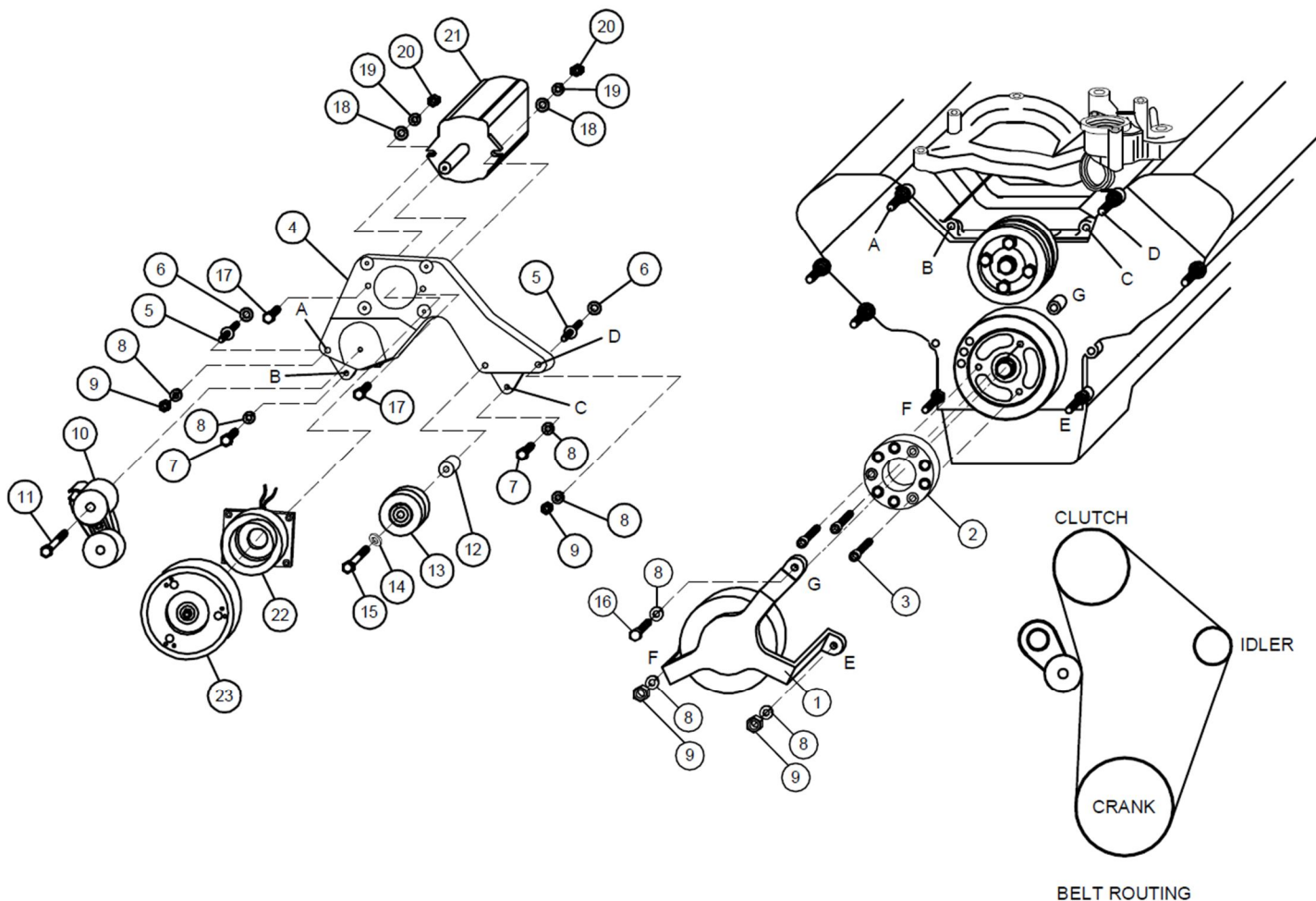
FMK 39ASB-8 Belt

1999-04 Ford Truck F-250-550

1997-16 Ford Van E-250-450

5.4L Triton

W-WO/AC



PARTS LIST

- | | |
|---------------------------|---|
| 1. FPC 378 Assembly (1) | 12. FMB 391 Bushing (1) |
| 2. FPA 37 Adapter (1) | 13. GPCD-8 (1) |
| 3. 10mm x 20mm SHCS (3) | 14. 12mm FW |
| 4. FMB 390A (1) | 15. 12mm x 65mm (1) |
| 5. 10107 1.5 ST (2) | 16. 10mm x 40mm (1) |
| 6. .080 shim (2) | 17. 3/8 x 1-1/2 NC (2) |
| 7. 10mm x 60mm 10.9 (2) | 18. 3/8 FW (2) |
| 8. 10mm LW (7) | 19. 3/8 LW (2) |
| 9. 10mm Nut (4) | 20. 3/8 NC Nut (2) |
| 10. 8920236 Tensioner (1) | 21. Clutch Pump Assembly (<i>Sold Separately</i>) |
| 11. 12mm x 80mm (1) | 22. Coil (<i>Sold Separately</i>) |
| | 23. Clutch (<i>Sold Separately</i>) |
| | 24. 5080595 Dayco Belt (not shown) |

Note : With 6" clutch #5080600