



CWMILL EQUIPMENT CO., INC.
P.O. Box 246 • Sabetha, Kansas 66534
(785) 284-3454 • FAX (785) 284-3601

FMK 45 -2 Belts

1999-2004 Ford Truck 250-550

6.8 Triton Super Duty
W-WO/AC

NOTE: MUST USE SIDE PORTED PUMP.

INSTALLATION NOTES

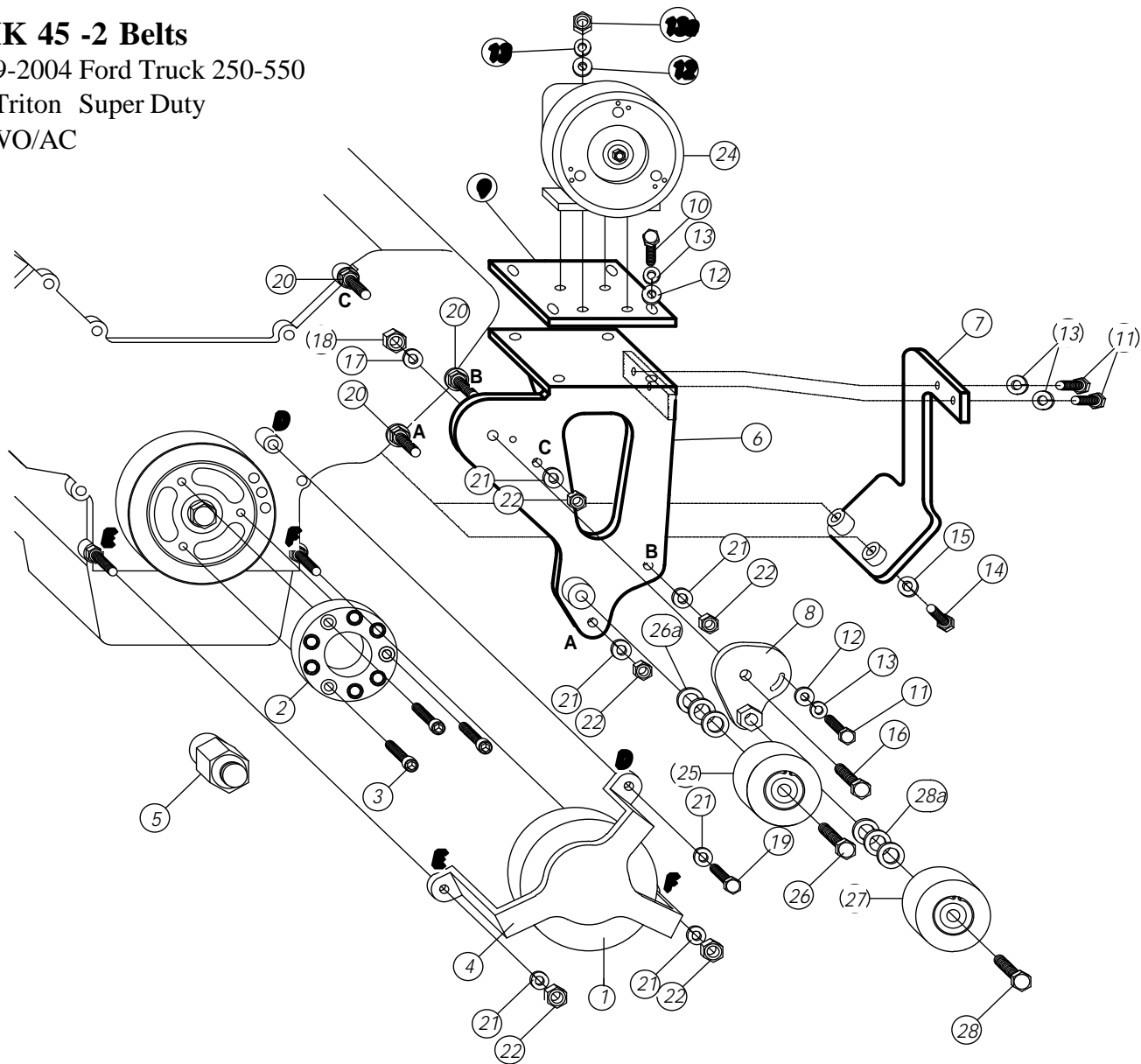
1. Disconnect negative battery terminal. Drain antifreeze and remove the upper radiator hose. Remove the fan and fan shroud. Threads on the fan are right handed.
2. Install crankshaft adapter (2) onto the front of the balancer with bolts (3). Apply Loctite to the threads and then torque to 40 ft. lbs.. Install the belts onto the drive pulley with the belts on the inside of legs at holes "E & F" and over the leg at hole "D". Slide the pulley assembly onto the front of the engine at O.E.M. studs "E & F" and hole "D". Make sure the six pins in the pulley slide into the six holes with the nylon bushings. If there are any straps, clips, etc. on the studs at "E & F", put them on the outside of the pulley bracket. Tighten nuts (12a) and bolt (11) evenly, then torque them to 30-35 ft. lbs.. If the pulley is lined up properly, a very slight amount of backlash should be felt in the pulley.
3. One at a time, remove O.E.M. studs at locations "A,B & C" and replace with studs (20). Torque them to 35 ft/lbs.. Install bracket (6) over studs (20), tighten securely with nuts (22) and lockwashers (21). Install brace (7) with bolts (11) and lockwashers (15) at the top and bolts (14) and lockwashers (13) at the bottom. Tighten all bolts.
4. Install grooved idler (25) onto the boss at the bottom of the bracket with bolt (26). Use the shim washers (26a) provided in the kit to align the idler with the drive pulley. Install tensioner arm onto the bracket with bolt (16), nut (18) and lockwasher (17). Install flat idler onto the tensioner arm with bolt (28). Use the shim washers (28a) provided in the kit to align the idler with the drive pulley. Install tensioner assembly onto the bracket with bolt (16), nut (18) and lockwasher (17). Mount pump onto pump plate with taperhead allen bolts. With bolts (10), lockwashers (13) and flatwashers (12), install the pump and plate assembly onto the main bracket (6). Align it with the drive pulley and idlers and then tighten securely. Place the belts over the pump and idlers and tension the belts. Use bolt (11), lockwasher (13) and flatwasher (12) to lock the tensioner in place after the belts are tight.
5. Replace the fan using spacer (5) and fan shroud. Install the upper radiator hose with the longer straight end on the engine (*backwards from its original position*). If sufficient clearance is not obtained between the upper radiator hose and the clutch pump pulley, a radiator hose for a 5.4 liter can be used. Connect battery terminal.
6. **CAUTION:** Check all engine compartment hoses and wiring to insure they are not kinked, touching any high temperature item, or do not interfere with any linkage components.
NOTE: Due to O.E.M. assembly tolerances, visually make certain that there is adequate clearance between fan and drive pulley.

FMK 45 -2 Belts

1999-2004 Ford Truck 250-550

6.8 Triton Super Duty

W-WO/AC



PARTS LIST

FPC 452 Assembly (items 1-4)

- 1. FPC 372 (1)
- 2. FPA 45 (1)
- 3. 10 x 25mm 1.5 SHCS w/Locktite
- 4. FPS 45 (1)
- 5. FSK 6.8 (1)
- 6. FMB 440 (1)
- 7. FMB 441 (1)
- 8. FMB 442L (1)
- 9. FMP 45(0-4) (1)
- 10. 3/8 x 1 1/4 NC (4)
- 11. 3/8 x 1 NC (2)
- 12. 3/8 FW (4)
- 13. 3/8 LW (6)
- 14. 14mm x 50mm 2.0 (2)
- 15. 14mm LW (2)
- 16. 12mm x 35mm 1.75 (1)
- 17. 12mm LW (1)

- 18. 12mm Nut 1.75 (1)
- 19. 10mm x 40mm 1.5 (1)
- 20. 10107 1.5 ST (3)
- 21. 10mm LW (6)
- 22. 10mm Nut 1.5 (5)
- 23. Belts (Not Shown) (2)
 - Goodyear 84690 (A67F)
 - #2 Goodyear 84680 (A66F)
 - #4 Goodyear 84670 (A65F)
- 24. Clutch Pump Assembly
(Sold Separately)

GPKDF-44 Idler Assembly (items 25-26a)

- 25. GPCD Idler (1)
- 26. 5/8 x 2 1/2 NC (1)
- 26a. IPW14 Shims (4)

IPKDF-45L Idler Assembly (items 27-28a)

- 27. IPCD Idler (1)
- 28. 17mm X 2 Left hand thread (1)
- 28a. IPW14 Shims (6)

NOTE: With 7" #2 84700 (A68F), #4 84690 (A67F).