



FMK 47-8

2005-2010 Ford F250-550
5.4L Triton 3Valve
2005-2016 Ford F250-550
6.8L Triton 3 Valve

NOTE: ON 2008 AND NEWER 5.4 IT IS THE INSTALLERS RESPONSIBILITY TO PURCHASE NEW BALANCER WITH HOLES FROM FORD PART#7L3Z-6312-A

INSTALLATION NOTES

- 08 and newer Models:** Disconnect the negative battery cable. Remove the air duct. From underneath the vehicle release the tabs on the fan shroud and swing it forward. Protect the radiator with a piece of cardboard and remove the fan. Leave the fan inside the fan shroud. (Fan nut has right hand threads)

05-07 Models: Disconnect the negative battery cable. Drain the engine coolant. Remove the upper radiator hose and overflow hose from the radiator. Remove the air duct. On 5.4L engines, remove and discard the air duct brace. Remove the fan and fan shroud. (Fan nut has right hand threads.)
- Clean any dirt or rust from the damper then install the drive pulley (1) onto the damper with bolts (2) & lock washer (3). Torque bolts to 40 ft. lbs.
- Remove the two nuts from the studs at locations "A" and "B". Remove the radio noise suppressors and torque the studs to 25 ft. lbs. **(IMPORTANT) Replace the radio noise suppressors back onto the studs. On 2011 model 6.8L engines use shim (24) and nut (23) provided at location B.** Remove the bolt from the idler at location "C". **Do not remove the idler.** If the heater hose at location "H" comes in contact with the bracket, cut off as indicated in the illustration. Expand the steel band holding the check valve. Push the check valve past the 90° bend and crimp the steel band back on the hose to secure the check valve. Reconnect the heater hose. The heater hose should now turn back toward the cab instead of up and then back. Re-route the wires that run across the front of the passenger side valve cover to allow the bracket to be installed without pinching any of the wires. Install the main bracket onto the engine with the O.E.M. nuts at location "A" and "B", lock washer (10) with bolt (11) at location "D", and lock washer (16) with bolt (12) at location "C". Torque nuts and bolts to 25 ft. lbs.
- Install idler (14) with bushing (13), lock washer (15), and bolt (16) onto the main bracket. Torque the bolt to 35-40 ft. lbs. Install the clutch pump with bolts provided in the kit. Align it with the drive pulley, and then secure it properly. Install the tensioner (17) with bolt (18). Torque to 25 ft. lbs. Install the drive belt according to the belt diagram. Install the appropriate fan spacer nut.
- 08 and newer Models:** Replace the fan and remove the protective cardboard if used. From underneath pull the fan shroud back until it snaps into place. Remove the resonator from the air duct as shown in the illustration. Connect the battery cable.

05-07 Models: Replace the fan and fan shroud. Install the radiator hose and overflow hose. Replace the air duct. On 5.4L engines, the resonator will need to be cut from the main air duct tube to gain belt clearance. Connect the battery cable and replace the engine coolant.
- Make certain any wires that were disturbed during installation do not come in contact with any hot or moving parts. Run the engine and check for proper belt tracking. Adjust if necessary.

NOTE: On 6.8L V-10 trucks equipped with push button 4 wheel drive, an additional bracket kit is required to relocate the vacuum canister. Part # FMB474A

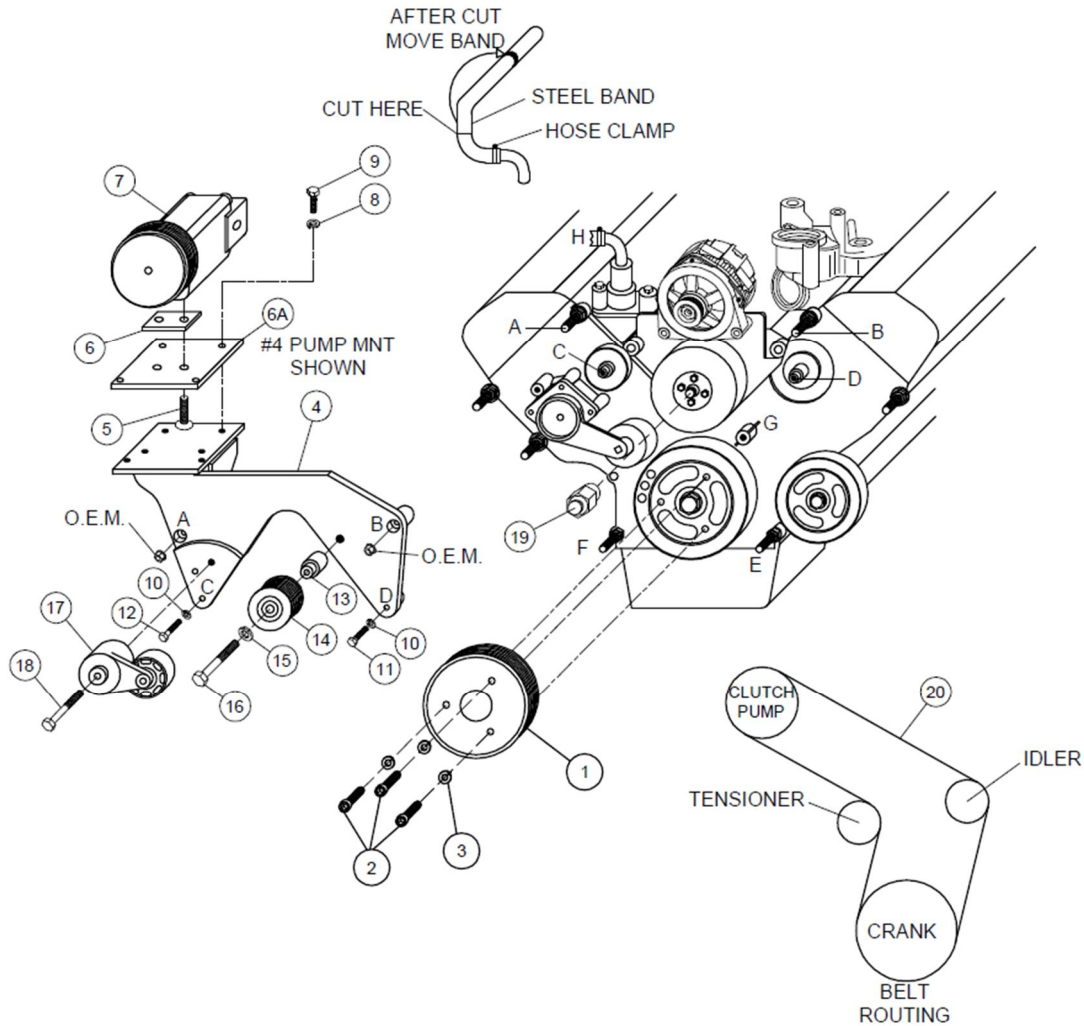
FMK 47-8

2005-2010 Ford F250-550

5.4L, 6.8L, Triton 3 Valve

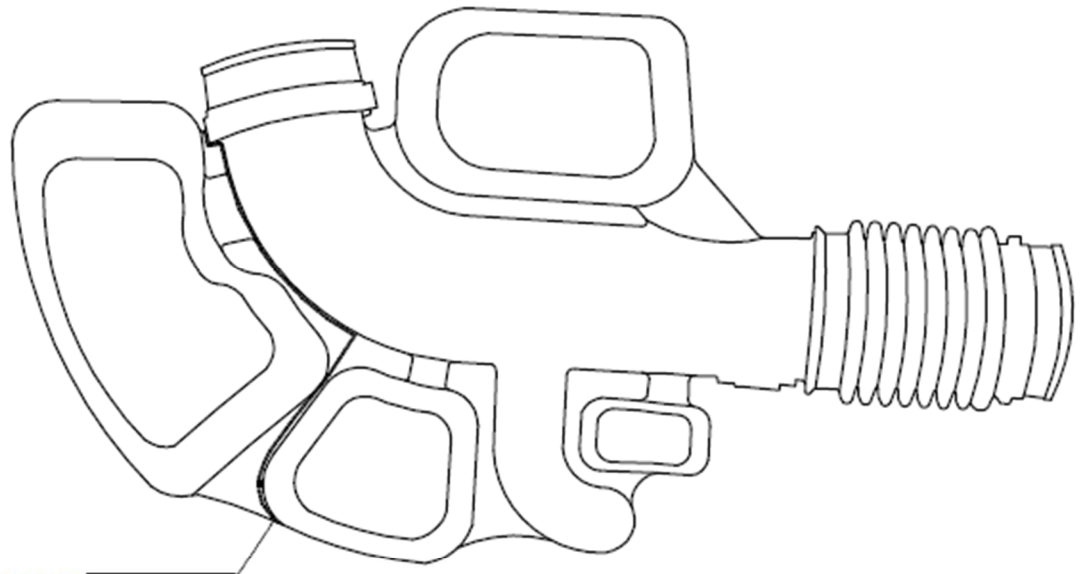
2005-2016 Ford F250-550

6.8L Triton 3 Valve

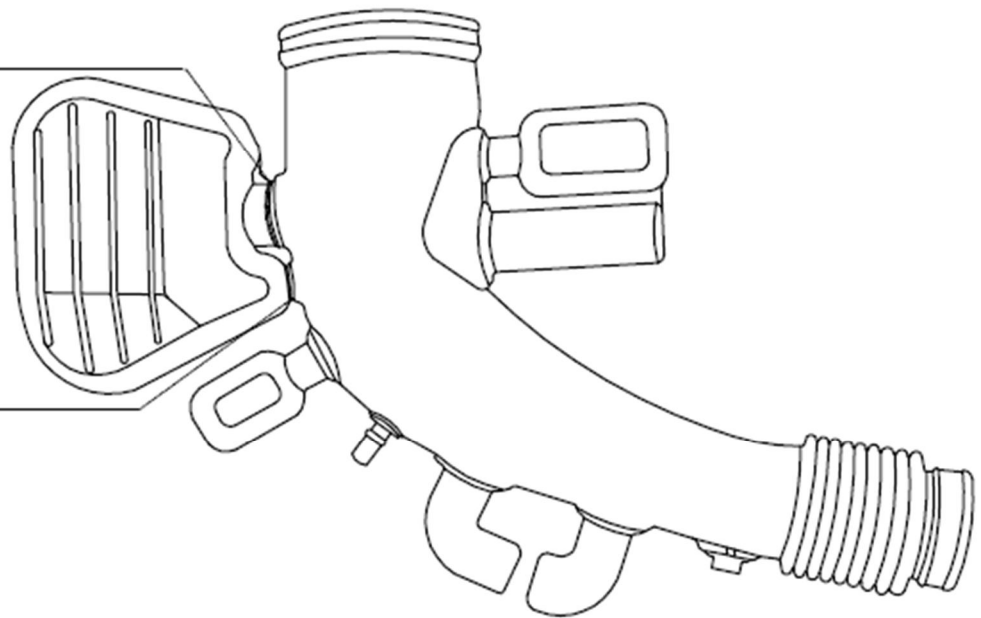


PARTS LIST

- | | |
|---|------------------------------------|
| 1. FPC368 (1) | 14. GPCD-8P (1) |
| 2. 10mm x 60mm (3) | 15. 12mm FW (1) |
| 3. 10mm LW (3) | 16. 12mm x 75mm 10.9 Bolt (1) |
| 4. FMB47 (0,2) (1) | 17. 89200B Tensioner (1) |
| 5. 1/2-13 x 1-3/4 FHCS (used on #4 only) (2) | 18. 10mm x 80mm 10.9 Bolt (10) |
| 6. 1006644 Mount Spacer (used on #4 only) (1) | 19. FSK37R (used on 5.4L only) (1) |
| 6a. FMP474 (used on #4 only) (1) | FSK 6.8B (used on 6.8L only) (1) |
| 7. Clutch Pump Assembly (Sold Separately) | 20. Dayco Belt # 5080715 (1) |
| 8. 3/8 LW (4) | 21. Aluminum Plug 1012646 (5.4L) |
| 9. 3/8-16 x 1 Bolt (4) | 1012647 (6.8L) |
| 10. 8mm LW (2) | 22. Rubber Grommet 1013038 (5.4L) |
| 11. 8mm x 35mm 10.9 Bolt (1) | 1007870 (6.8L) |
| 12. 8mm x 45mm 10.9 Bolt (1) | 23. 8mm Flange Nut (1) |
| 13. FMB 473-8 (1) | 24. .040" x 8mm Shim Washer (1) |

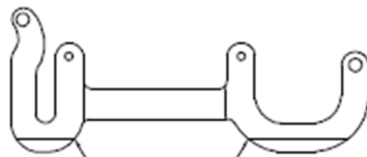


5.4L TRITON
CUT HERE



6.8L TRITON
CUT HERE

6.8L TRITON
CUT HERE



CUT ALONG LINE.
APPROX. 1/2"