

INSTALLATION NOTES

1. Disconnect the negative battery cable. Remove the OEM belt and idler at location "A". Remove the nut, radio noise suppressor and stud at location "B", and the bolt at location "C". Remove the bolts at locations "D" & "E". Install brace (2) with bolts (3) and flat washers (4) at that location. **DO NOT TIGHTEN.**
2. Reroute the wiring harness so bracket (1) can be installed without damaging the wires. Install bracket (1) at location "B" with the bolt (6) and lock washer (7), and location "C" with bolt (5) & lock washer (7). Torque both bolts to 25 ft. /lbs. Install bolt (8) thru bracket (1), and into brace (2). Tighten bolts (8) and (3) evenly, then torque bolt (8) to 30 ft. /lbs., and bolts (3) to 10 ft. lbs. Install the OEM idler back to its original location.
3. Install pump (13) onto the bracket with bolts, lock washers & nuts (14, 15, 16 & 17). Torque nuts to 35 ft. lbs. *Note: On 05-07 5.4L engines, it may be necessary to trim the plastic nipple from the air cleaner box. On 08 and newer chassis's a resonator will need to be cut from the air intake tube as shown and capped with the plug and grommet provided in the kit.* Install the clutch and coil per manufacturer's instructions. Install the new belt and route it as shown in the illustration. With the tensioner depressed, install idler assembly (9-12) into the lowest possible hole at location F. Torque bolt (12) to 35 ft. lbs. then release the tensioner. Connect the negative battery cable. Run the engine and check for proper belt tracking and clearances.

Note: Check all engine compartment hoses and electrical wiring that may have been disturbed or rerouted during kit installation to be sure that hoses are not kinked, that they do not touch any high temperature items, and that they do not interfere with any linkage components.

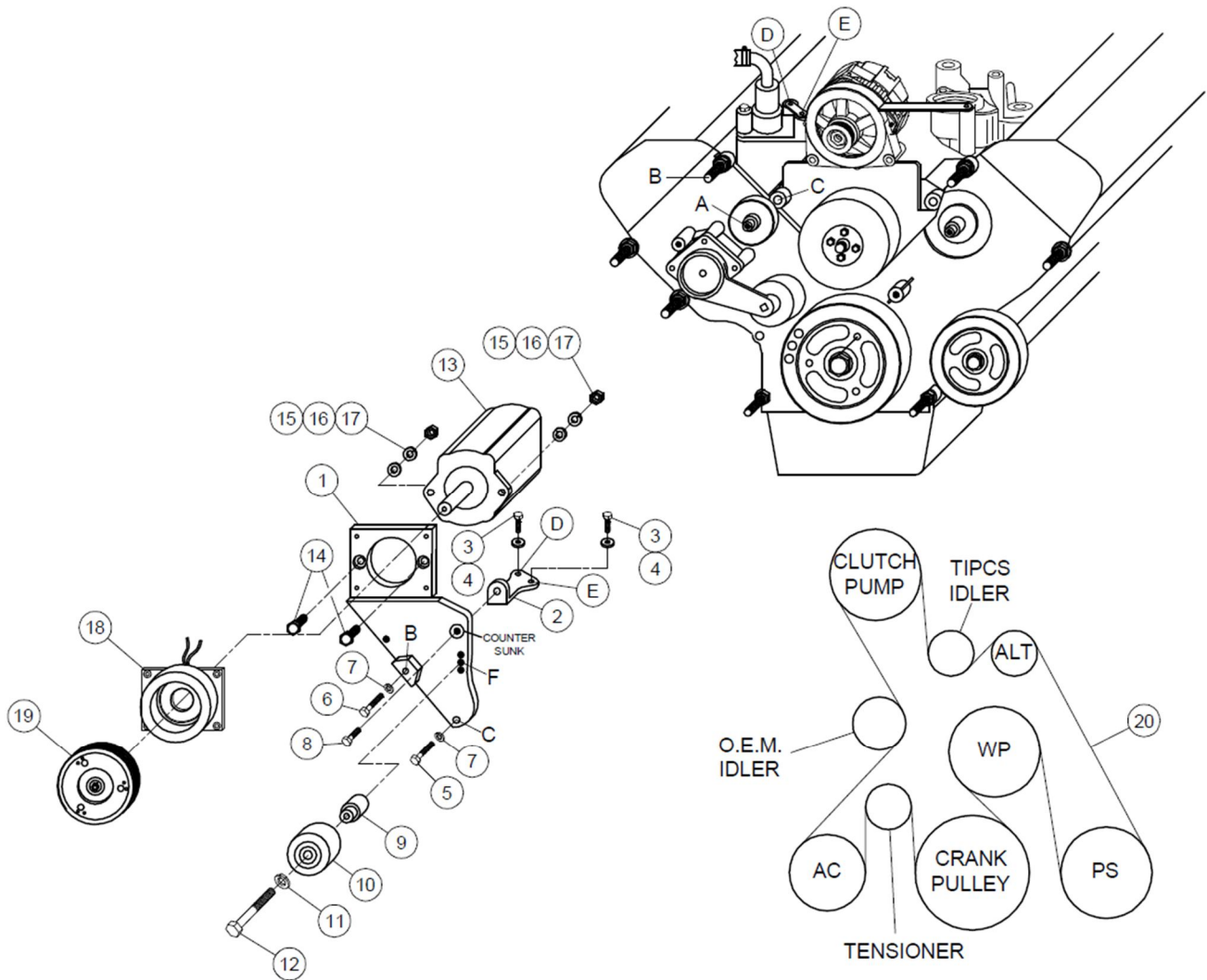
FMK47A-I6

2005-10 Ford F-250-550

5.4L Triton 3-Valve

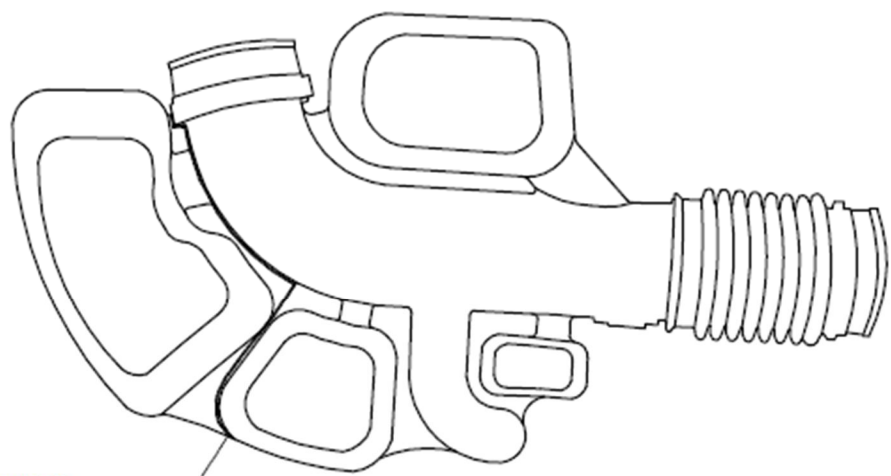
2005-2016 F250-550

6.8L Triton 3 Valve

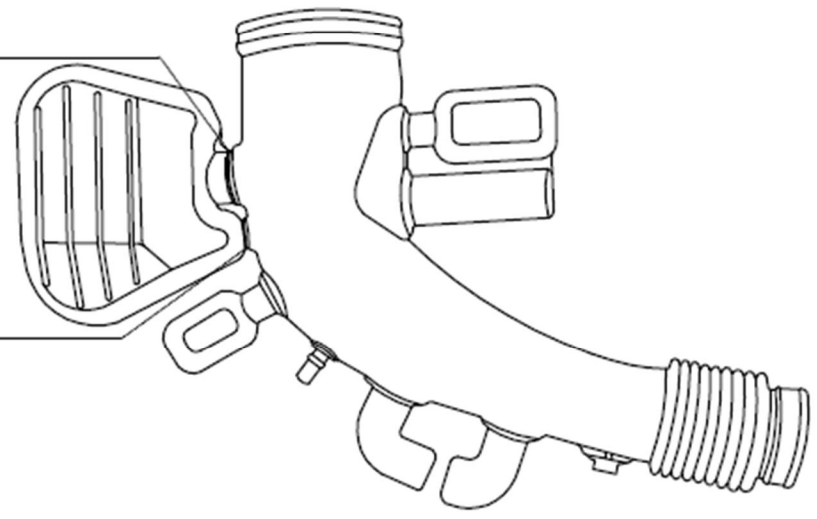


PARTS LIST

- | | |
|---|---|
| 1. FMP 47A-I6 (1) | 14. 3/8-16 x 1-1/2 Bolt (2) |
| 2. FMB 471-I6 (1) | 15. 3/8 FW (2) |
| 3. 6mm x 25mm x 1.0 Bolt (2) | 16. 3/8 LW (2) |
| 4. 6mm FW (2) | 17. 3/8-16 Nut (2) |
| 5. 8mm x 60mm x 1.25 Bolt (1) | 18. Coil (<i>Sold Separately</i>) (1) |
| 6. 8mm x 70mm x 1.25(1) | 19. Clutch (<i>Sold Separately</i>) (1) |
| 7. 8mm LW (2) | 20. 5061300 Dayco Belt (1) |
| 8. 10mm x 20 Flange Bolt (1) | 21. Aluminum Plug 1012646 (5.4L)
1012647 (6.8L) |
| 9. FMB 472-I6 (1) | 22. Rubber Grommet 1013038 (5.4L)
1007870 (6.8L) |
| 10. 89007 Dayco (1) | 23. SP64-0.188 (2) |
| 11. 12mm FW (1) | |
| 12. 12mm x 45mm Bolt (1) | |
| 13. Clutch Pump (<i>Sold Separately</i>)(1) | |

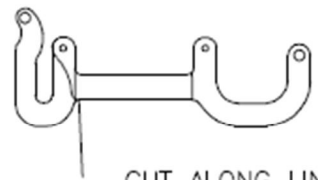


5.4L TRITON
CUT HERE



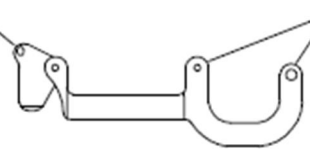
6.8L TRITON
CUT HERE

6.8L TRITON
CUT HERE



CUT ALONG LINE

FMB471-I6



INSERT .188" SHIMS
ITEM #23