



CW MILL EQUIPMENT CO., INC.  
P.O. Box 246 • Sabetha, Kansas 66534  
(785) 284-3454 • FAX (785) 284-3601

**FMK 66 LSP-2B**  
1999-2003 Ford Truck 250-550  
7.3 Direct Injected Intercooled Diesel  
W-WO/AC or Dual Alternator

## INSTALLATION NOTES

1. Disconnect the negative battery cables. Drain the engine coolant until coolant level is below the thermostat housing. Remove the tire wrench and jack tools from the radiator support. Remove the three bolts from the coolant reservoir and move it aside. Remove the upper radiator hose, the fan and fan shroud. The fan nut has right hand threads. Remove the plastic engine cover.
2. Remove the OEM belt and the alternator. Use powersteering pulley puller, (Snap-On PN# CJ117, MAC PN# PP7185M) or it's equivalent to remove powersteering pulley. Remove the three bolts holding the powersteering pump to the bracket, do not remove hoses from P/S pump. Remove the four bolts holding the powersteering and alternator bracket to the engine and remove the bracket.
3. Install the new bracket (4) onto the engine using bolt (10) and lockwasher (11) through the short bushing and bolts (9) with lockwasher (11) at the other locations. Tighten bolts securely.
4. Install the drive pulley (1) onto the balancer using bolts (2) with lockwasher (3). Install the powersteering pump with the OEM bolts and install the P/S pulley using installation tool (Snap-On PN# CJ113B ) (Mac PN# PP7005M Mac) or it's equivalent. Install the alternator with OEM bolts and install the OEM belt to its original routing.  
**NOTE:** Since the alternator location was altered, the O.E.M. belt will fit slightly tighter. On trucks not equipped with A/C, it may be necessary to loosen the three bolts holding the O.E.M. idler in order to install the factory serpentine belt.
5. Install the pump into the foot mount plate with bolts (21) flatwashers (22) lockwashers (23) and nuts (24). Install the pulley onto the pump as per pulley instructions. Install the pump and plate assembly onto the bracket using bolts (12), flatwasher (13) and lockwashers (14). Using a straight edge, align the pulley on the pump with the drive pulley, then tighten the plate bolts securely.
6. Install fan spacer (28), fan, and fan shroud. Install the upper radiator hose according to the attached sheet. Replace the radiator reservoir, tire wrench and jack tools. Reconnect the battery cables. Run the engine and check for proper belt tracking and clearance to all moving parts.

**CAUTION:** Check all engine compartment vacuum hoses and electrical wiring that may have been disturbed or rerouted during kit installation to be sure that hoses are not kinked, that they do not touch any high temperature item, and that they do not interfere with any linkage components.

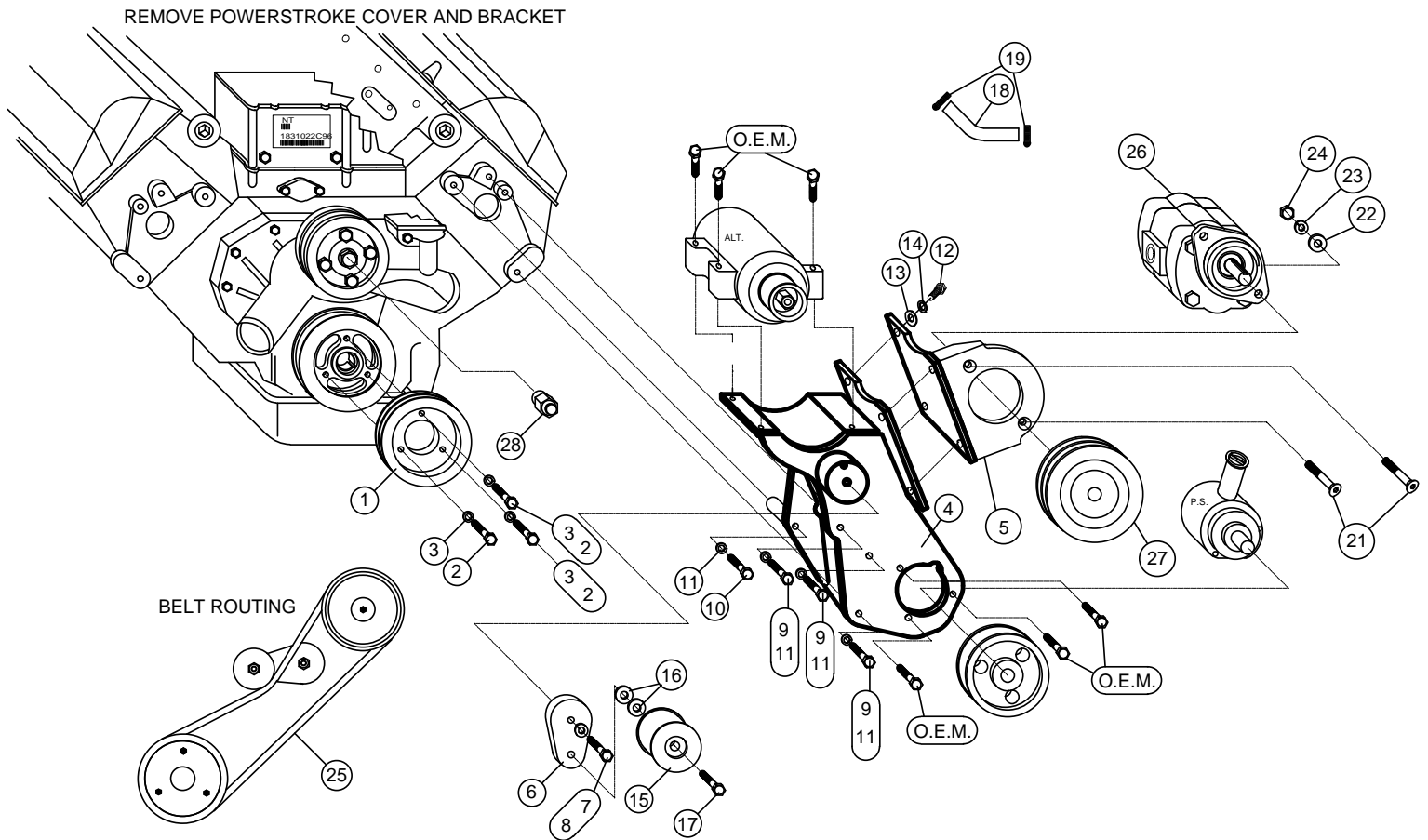
## FMK 66LSP-2B

1999-2003 Ford Truck 250-550

7.3 D.I.T. Intercooled Diesel

W-WO/AC/Dual Alternator

**CAUTION:** Due to limited space available in the engine compartment, the pump is mounted directly under the hood light. Check clearance between the light and the pump before closing the hood. If there is not enough clearance, relocate the hood light to provide clearance.



### PARTS LIST

1. FPC 65212B (1)
2. 10mm x 40mm 1.5 (3)
3. 10mm LW (3)
4. FMB 660 (1)
5. FMP 66LSP (1)
6. FMB 661L (1)
7. 12mm x 45mm 1.75 (1)
8. 12mm LW (1)
9. 10mm x 140mm 1.75 (3)
10. 10mm x 80mm 1.75 (1)
11. 10mm LW (4)
12. 3/8 x 1 NC (4)
13. 3/8 FW (4)
14. 3/8 LW (4)
- IPKDB-25L Assembly (items 15-17)
15. IPCD-B (1)
16. IPW 14 Shim (4)
17. 17mm x 2 1/2 Left hand thread (1)
18. F66 Rad. Line (1)
19. #28 Clamp (2)
20. 1" Wrench (Not Shown) (1)
21. 1/2 x 1 3/4 Flat Socket Pump Bolts (2)
22. 1/2 FW (2)
23. 1/2 LW (2)
24. 1/2 NC Nut (2)
25. Belts (2)  
Dayco# BP69
26. Clutch Pump Assembly (1)  
(Sold Separately)
27. Pulley (Sold Separately) (1)
28. FSK 65 (1)