



CW MILL EQUIPMENT CO., INC.
P.O. Box 246 • Sabetha, Kansas 66534
(785) 284-3454 • FAX (785) 284-3601

FMK 76 -2Belts

1993-98 Ford F & LN Series Truck
5.9 Cummins (1060)
W-WO/AC
W-WO/Hyd. Brakes
(Serpentine)

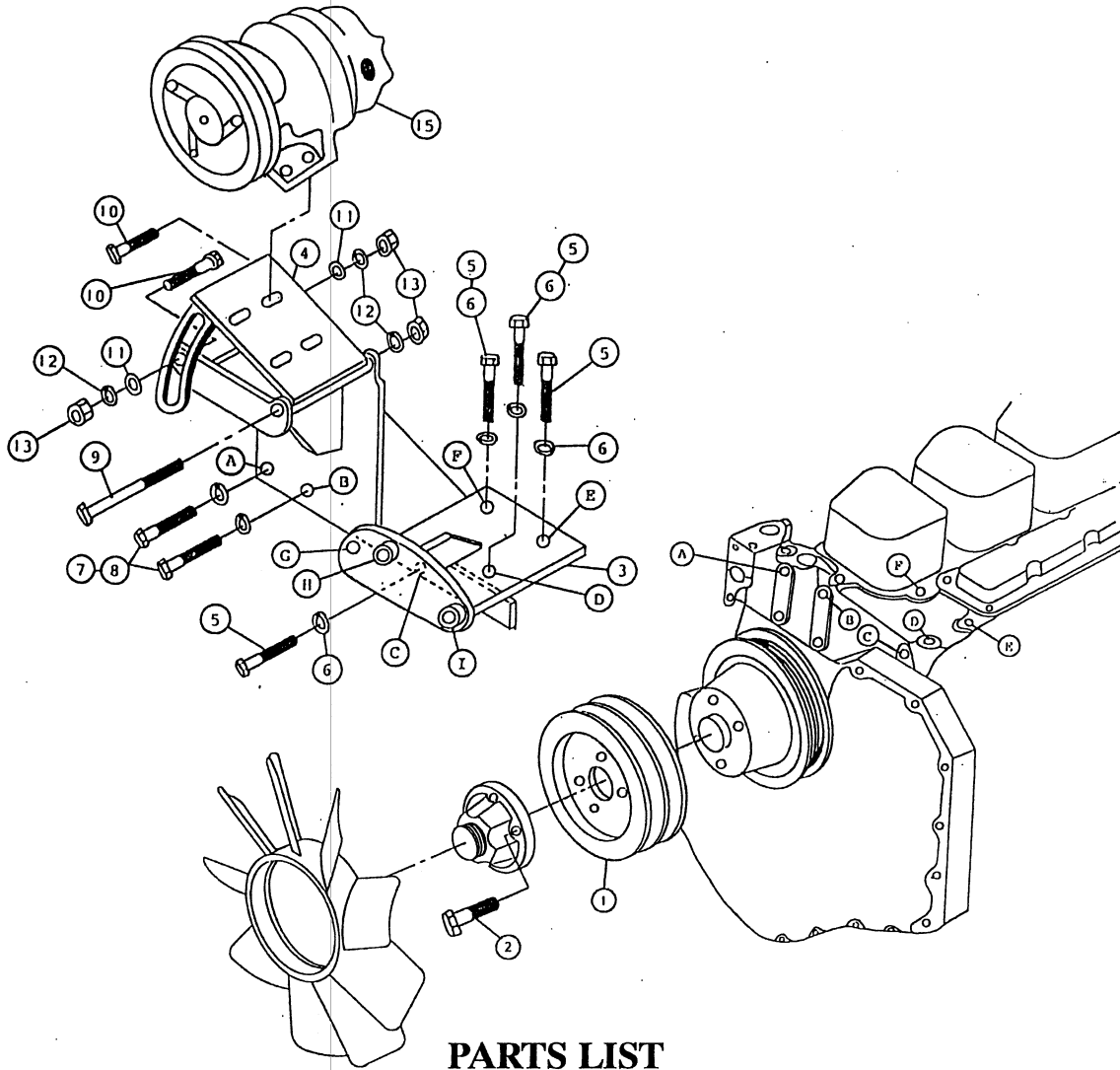
INSTALLATION NOTES

1. Disconnect battery. Remove serpentine belt. (If equipped with belt driven hydraulic brake pump, remove the belt and hydraulic brake pump. Remove the three bolts at locations (D,E,F) and discard the cast iron bracket).
2. Install main bracket (3) using two 8mm X 30mm bolts and (7) lockwashers at locations (A & B), four 10mm X 30mm bolts (5) lockwashers at locations C,D, E, & F). Tighten all bolts securely. (If equipped with belt driven hydraulic brake pump, install the hydraulic brake pump using O.E.M. bolts at locations (G,H, & I).
3. Install drive pulley between fan spacer and factory pulleys. Install serpentine and hydraulic brake belts (if equipped).
NOTE: Normally O.E.M. bolts can be reused with a thread sealant (Loctite), should O.E.M. bolts be to short, use 10 X 30 socket head head bolts supplied).
4. Install pump plate (4) on bracket (3) using one 3/8 X 4 NC bolt (9) and two 3/8 X 1 1/2 NC bolts (10) with nuts and washers. Install pump on pump plate with mounting bolts provided. Align the clutch pulley with the drive pulley and tighten pump bolts.
5. Install and tension drive belts. Tighten all mounting bolts.

NOTE: This kit is designed to operate successfully with the standard fan supplied by the manufacturer of your truck. Due to O.E.M. assembly tolerances and change, visually make certain that there is adequate clearance between fan and drive pulley. It may be necessary to use a different fan spacer for proper clearance.

FMK 76 -2 Belts

1993-98 Ford (1060) 5.9 Cummins



PARTS LIST

- | | |
|-------------------------------------|---|
| 1. FPC 762 (1) | 9. 3/8 X 4 NC (1) |
| 2. O.E.M. or 10 X 30mm 1.5 SHCS (4) | 10. 3/8 X 1 1/2 NC (2) |
| 3. FMB 760 (1) | 11. 3/8 FW (2) |
| 4. FMP 761 (1) | 12. 3/8 LW (3) |
| 5. 10mm X 30mm 1.5 (4) | 13. 3/8 NC (3) |
| 6. 10mm LW (4) | 14. AX-41 (Not Shown)
(#2 AX-40, #4 AX-39) |
| 7. 8mm X 30mm 1.25 (2) | 15. Clutch Pump Assembly
(Sold Separately) |
| 8. 8mm LW (2) | |

NOTE: With 7" clutch #2 AX-41, #4 AX-40