



**CW MILL EQUIPMENT CO., INC.**  
**P.O. Box 246 • Sabetha, Kansas 66534**  
**(785) 284-3454 • FAX (785) 284-3601**

**FMK 93-I8**  
**2003-09 Ford Truck 650 & 750**  
**CAT 3126, W/AC**

---

## **INSTALLATION NOTES**

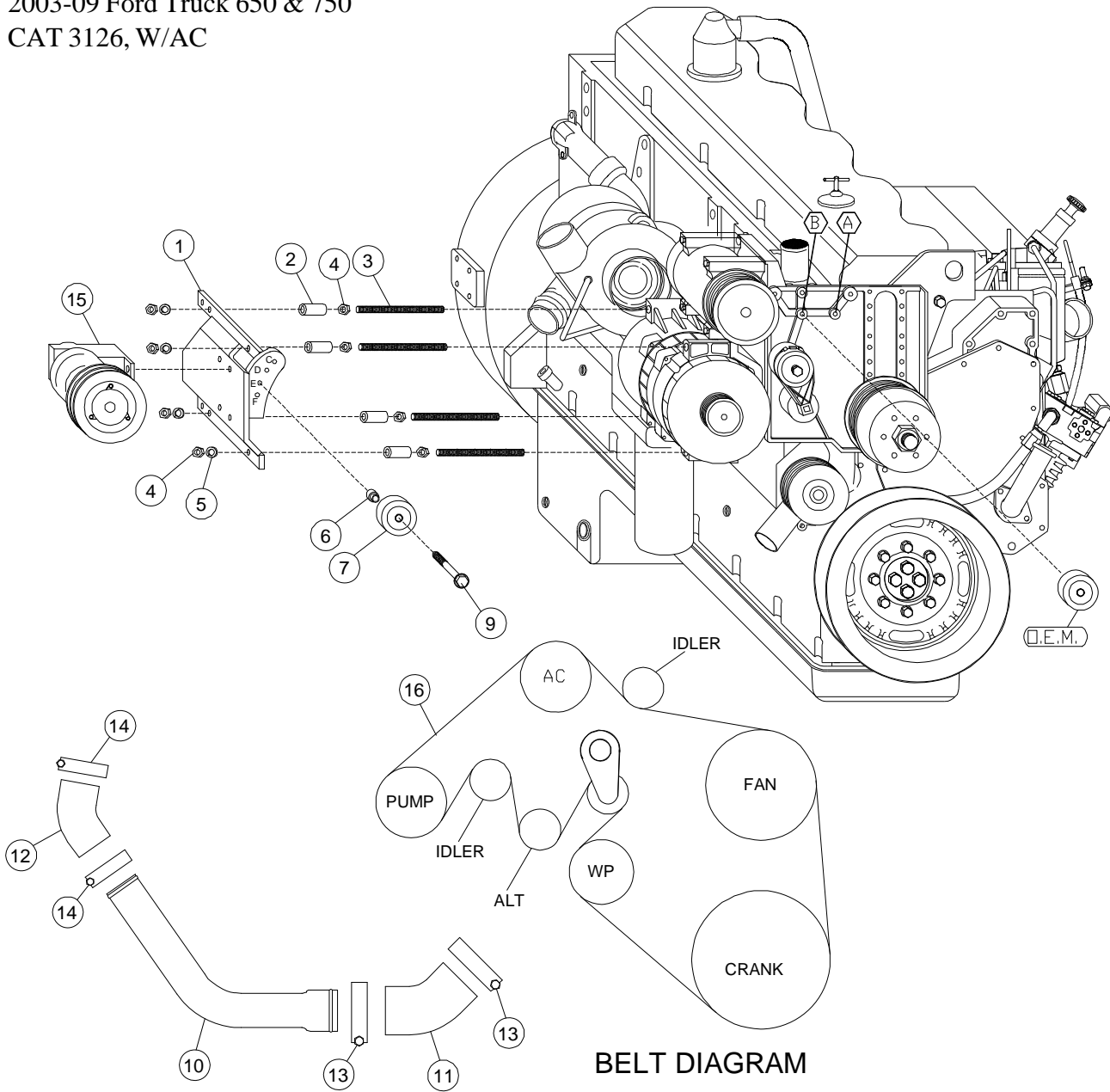
---

1. Disconnect negative battery cable. Remove innercooler tube and both rubber elbows. Remove the four alternator bolts one at a time and replace them with studs (3) and nuts (4). Torque to 35-40 ft/lbs. Install spacers (2) onto each of the four alternator studs. Install the pump (15) onto the pump plate (1) with bolts provided in the kit. (DO NOT TIGHTEN). Install the pump and plate assembly onto the four alternator studs and secure with lockwashers (5) and nuts (4). Torque to 35-40 ft/bs. Align the clutch pump pulley with the drive pulley, then tighten the pump bolts securely. Move O.E.M. idler from location "A" to location "B".
2. Install idler assembly (6, 7) onto bracket (1) in location "E", with bolt (9) and spacer (6). Install belt (16) as shown in belt diagram. Install new innercooler tube (10) with new elbows (11, 12) and clamps (13, 14). Reconnect battery cable.

# FMK 93-I8

2003-09 Ford Truck 650 & 750

CAT 3126, W/AC



**BELT DIAGRAM**

## PARTS LIST

- |                                |   |
|--------------------------------|---|
| 1. FMB 931 (1)                 | 11. 3 1/2" Rubber Elbow (1)                   |
| 2. SP100-1.340 (4)             | 12. 3" Rubber Elbow (1)                       |
| 3. 10mm x 180mm Stud (4)       | 13. 250-92 Hose Clamp (2)                     |
| 4. 10mm Nut (8)                | 14. 250-84 Hose Clamp (2)                     |
| 5. 10mm LW (4)                 | 15. Clutch Pump Assembly<br>(Sold Separately) |
| 6. FMB 935 (1)                 | 16. Belt; #2--5081000, #4--5081020            |
| 7. 89016 (1)                   |   |
| 8. NOT USED                    |   |
| 9. 10mm x 40mm Flange Bolt (1) |   |
| 10. 3-55-ST 3" Steel Elbow (1) |   |