



CW MILL EQUIPMENT CO., INC.  
P.O. Box 246 • Sabetha, Kansas 66534  
(785) 284-3454 • FAX (785) 284-3601

## IMK 48-I8 Belt

2002-04 International  
4300-4400  
DT466  
W-WO/AC

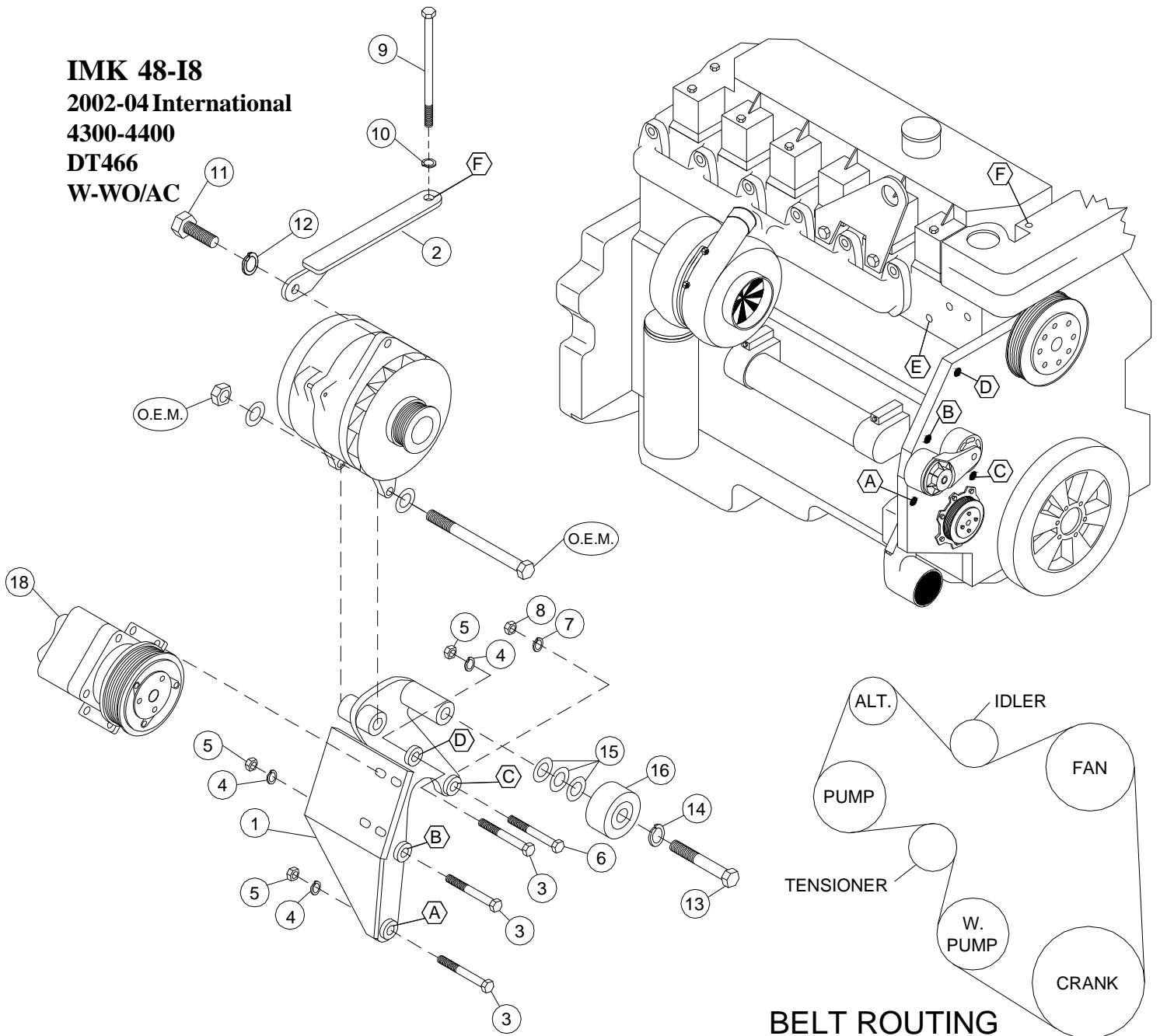
### INSTALLATION NOTES

---

1. Disconnect the negative battery cable(s). Drain the engine coolant, and remove the passenger side inner fenderwell. Remove the A/C belt, the accessory drive belt and accessory drive tensioner. Remove the alternator and alternator mounting bracket.
2. Disconnect the heater hose from the 45° fitting at location “E”. Remove the fitting. Apply sealant to the male threads of the 90° street fitting, and install it into the head at location “E” with the female opening pointed straight up. Apply sealant to the threads on hose fitting and install it in the 90° fitting. Shorten the heater hose as necessary. then reconnect it.
3. Using bolts (3), lockwashers (4) and nuts (5) at locations “A, B & D” and bolt (6) with lockwasher (7) and nut (8) at location “C”, install the pump bracket (1) and tighten the bolts at all locations. Install the alternator with the OEM bolt, flatwashers and nut through the two ears at the bottom of the alternator. **DO NOT TIGHTEN**. Remove the 12mm bolt at location “F”. Install brace (2) with bolt (9) and lockwasher (10) at location “F” and bolt (11) with lockwasher (12) on the top of the alternator. Tighten bolts. It may be necessary to turn the 90° fitting in the aluminum expansion tank so the hose clears the alternator brace (2).
4. Install the clutch pump onto the pump bracket using the bolts provided in the kit. Use a straight edge to align the pump with the other pulleys. Install idler (16) using bolt (13) with lockwasher (14). Use shims (15) to properly align the idler. Install the O.E.M. tensioner back to it’s original location. Install the drive belt and route it according to the belt diagram. Replace the A/C belt. Replace the engine coolant. Install the fenderwell and connect the battery(s). Run the engine to make sure the belt tracks properly on the pulleys.

**NOTE:** Check all engine compartment hoses and electrical wiring that may have been disturbed or rerouted during kit installation to be sure that hoses are not kinked, that they do not touch any high temperature items, and that they do not interfere with any linkage components.

**IMK 48-I8**  
**2002-04 International**  
**4300-4400**  
**DT466**  
**W-WO/AC**



**PARTS LIST**

- |                          |                                |
|--------------------------|--------------------------------|
| 1. IMP 48 (0-4) (1)      | 13. 5/8 x 2 1/2 NC (1)         |
| 2. IMB 481 (1)           | 14. 5/8 LW (1)                 |
| 3. 10mm x 75mm 1.5 (3)   | 15. IPW 14 (3)                 |
| 4. 10mm LW (3)           | 16. IPCD-3.0 (1)               |
| 5. 10mm 1.5 Nut (3)      | 17. Belt w/5-1/2" Clutch       |
| 6. 8mm x 70mm 1.25 (1)   | (Not Shown) (1) Dayco 5080855, |
| 7. 8mm LW (1)            | #2 K080839 Gates, #4 5080830   |
| 8. 8mm 1.25 Nut (1)      | w/1/2" Spacer                  |
| 9. 12mm x 180mm 1.75 (1) | 18. Clutch Pump Assembly (1)   |
| 10. 12mm LW (1)          | (Sold Separately)              |
| 11. 1/2 x 1 1/2 NC (1)   | 19. 3400-8 90° Fitting (1)     |
| 12. 1/2 LW (1)           | 20. 4404-12-8 Hose Barb (1)    |

**Note:** With 6" clutch: #2 5080855, #4 5080855 w/1/2" spacer.