



**CW MILL EQUIPMENT CO., INC.**  
**P.O. Box 246 • Sabetha, Kansas 66534**  
**(785) 284-3454 • FAX (785) 284-3601**

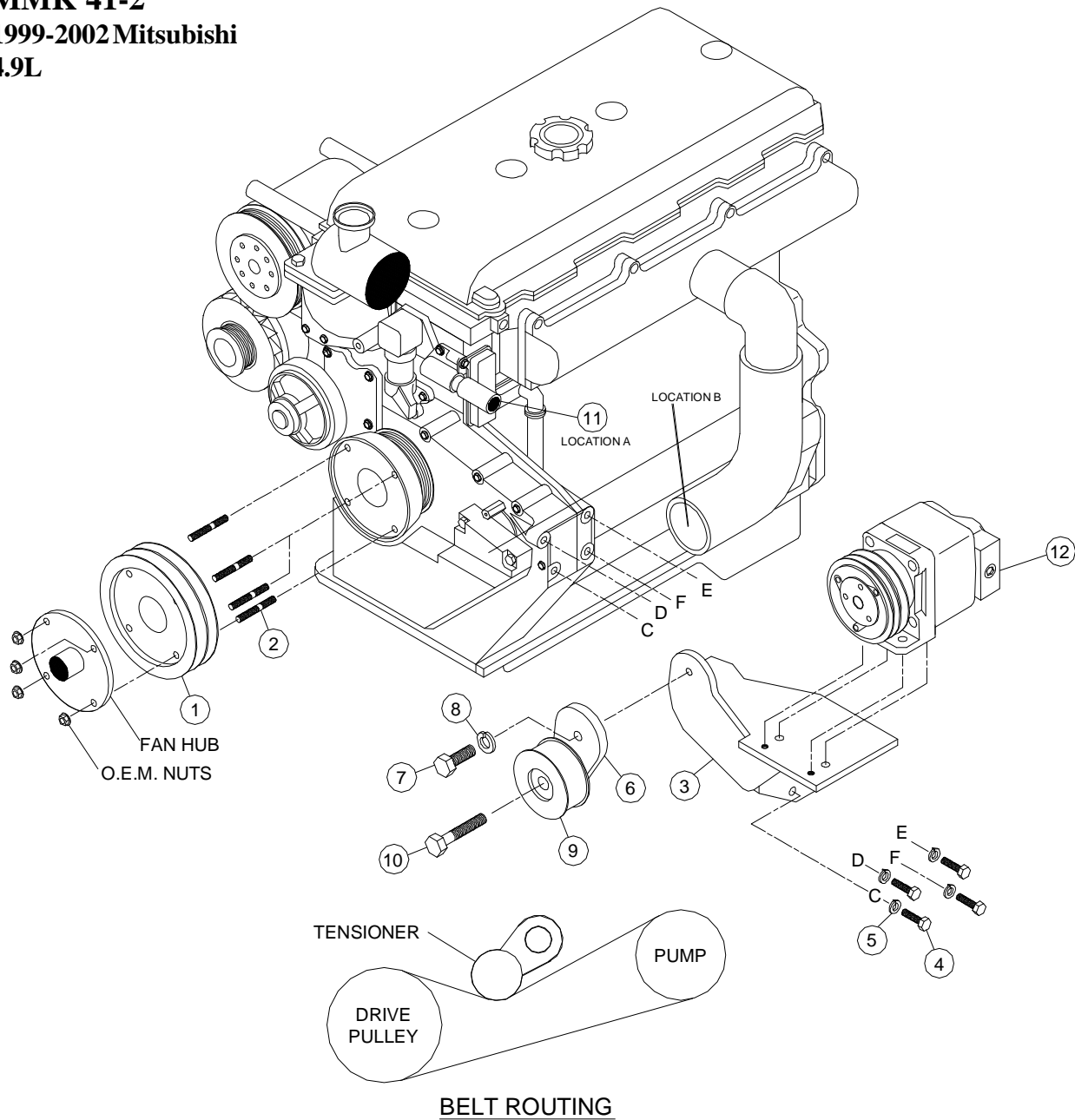
**MMK 41-2**  
**1999-2002 Mitsubishi**  
**4.9 L**

## **INSTALLATION NOTES**

---

1. Disconnect the negative battery cable. Drain the engine coolant until coolant level is below the thermostat housing. Undo top radiator hose, remove fan and shroud. Remove heater hose (A). Remove turbo tube (B). Remove OEM studs from drive pulley.
2. Install new studs (2) in drive pulley. Install the shroud. Install pulley (1) and the fan with OEM nuts. Install the pump bracket (3) with bolts (4) & lockwashers (5). Reinstall turbo tube. Be sure to start all bolts before tightening any of the bolts. Install replacement heater hose (11) using OEM hose clamps. Install pump (12) onto bracket (3) with bolts provided. Install belt tensioner (6) onto pump bracket (1) using bolt (7) & lockwasher (8). Install belts (16) and tighten by using bolt (10), and then tighten bolt (7).
3. Replace engine coolant and reconnect battery cable. Run engine and check for proper belt tracking and clearance of all moving parts.

**MMK 41-2**  
**1999-2002 Mitsubishi**  
**4.9L**



**PARTS LIST**

- |                       |   |
|-----------------------|---|
| 1. MMK 41(0-4)        | 9. IPCD Idler (1)                                   |
| 2. 8mm x 65 studs (4) | 10. 17mm x 2 <i>Lefthand Thread Locktite</i> (1)    |
| 3. MMB 411 (1)        | 11. MM41HH, 5/8 Formed Hose (1)                     |
| 4. 10mm x 30mm (4)    | 12. Clutch Pump Assembly ( <i>Sold Separately</i> ) |
| 5. 10mm LW (4)        | 13. 84490 V Belt(Dayco) (2)                         |
| 6. MMB 412 (1)        |   |
| 7. 12mm x 35mm (1)    |   |
| 8. 12mm LW (1)        |   |