



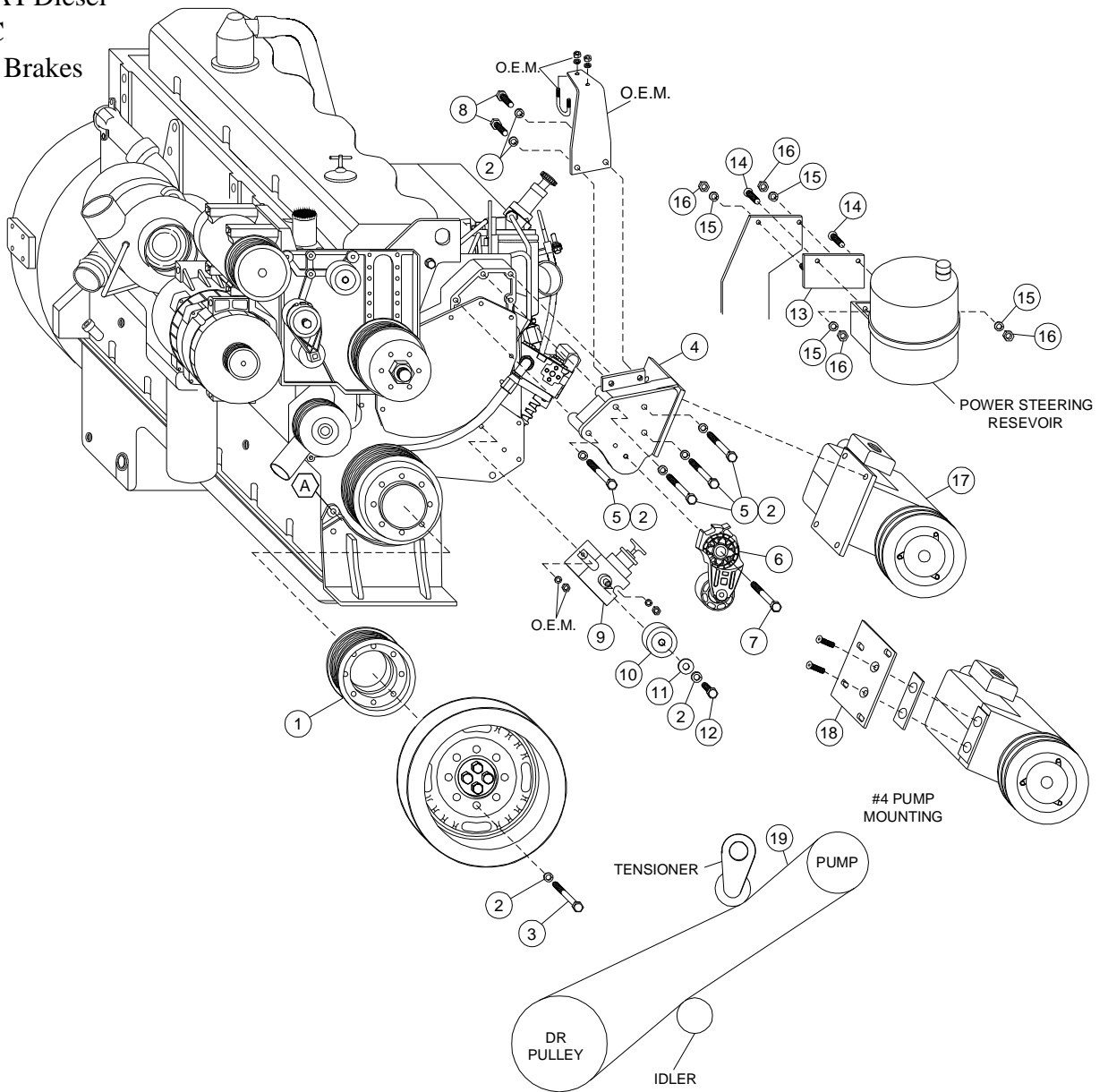
CW MILL EQUIPMENT CO., INC.
P.O. Box 246 • Sabetha, Kansas 66534
(785) 284-3454 • FAX (785) 284-3601

PMK 90-8
2003-08 Peterbilt
3126, C7 CAT Diesel
W-W/O AC, W-W/O Air Brakes

INSTALLATION NOTES

1. Remove the eight bolts holding the damper onto the crankshaft. Install pulley (1) between the damper and the O.E.M. pulley using bolts (3) and lockwashers (2). Torque bolts to 40 ft.lbs..
2. Remove bolts from power steering reservoir. Bolt reservoir onto new mounting plate (13) with bolts (14), lockwashers (15), and nuts (16). Bolt plate back onto mounting bracket by placing studs back through O.E.M. bracket holes using lockwashers (15) and nuts (16).
3. Remove radiator hose support bracket. Install pump bracket (4) with bolts (5) and lockwashers (2). Install radiator hose support bracket onto pump bracket (4) with bolts (8) and lockwashers (2). If vehicle is equipped with air brakes a fitting (20) is supplied to rerout pop-off valve for hose clearance.
4. Install pump onto bracket (4) with bolts provided and align it with the drive pulley. Tighten bolts securely. Install tensioner (6) with bolt (7).
5. Remove oil fill tube and replace with new oil fill (9) with O.E.M. nuts and lockwashers. Install idler (10) with bolt (12), lockwasher (2), and flatwasher (11). Install belt (20) according to belt diagram. Check for proper clearances to any moving parts. Run engine and check for proper tracking of the belt, adjust if necessary.

PMK 90-8
 2003-08 Peterbilt
 3126, C7 CAT Diesel
 W-W/O AC
 W-W/O Air Brakes



BELT DIAGRAM

PARTSLIST

- | | |
|--|---|
| <ul style="list-style-type: none"> 1. FPC 938 (1) 2. 10mm LW (15) 3. 10mm x 65mm (8) 4. PMB 901 (1) 5. 10mm x 80mm (4) 6. Tensioner 89200B (1) 7. 10mm x 75mm (1) 8. 10mm x 25mm (2) 9. PMB 902 Oil Fill (1) 10. TIPCS Idler (1) | <ul style="list-style-type: none"> 11. 3/8 FW (1) 12. 10mm x 20mm (1) 13. PMB 903 Plate 14. 3/8 x 1-1/4 FHSCS 15. 3/8 LW (4) 16. 3/8 Nut (4) 17. Clutch pump (Sold Separately) 18. IMP 634 (use w/#4 only) 19. 5080630 Dayco 20. 5500-8 Elbow Thompkins (not shown) |
|--|---|