



CW MILL EQUIPMENT CO., INC.
P.O. Box 246 • Sabetha, Kansas 66534
(785) 284-3454 • FAX (785) 284-3601

SMK 37A-I6 Belts

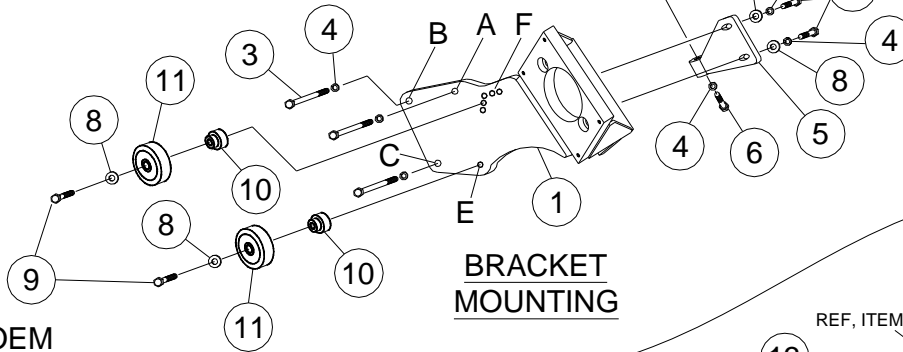
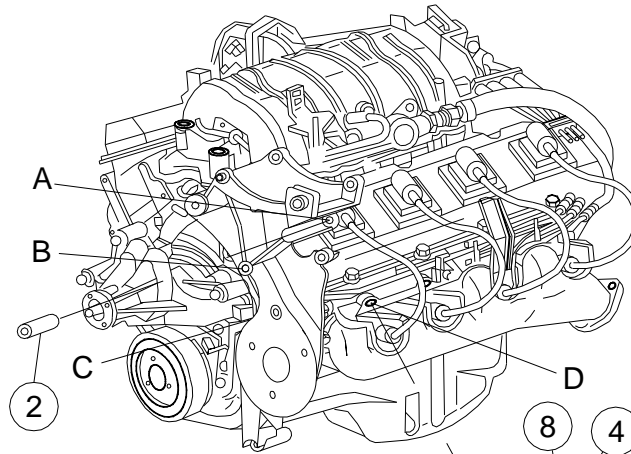
2003-09, 2012 ISUZU
6.0L(GM)
W-W/OAC

INSTALLATION NOTES

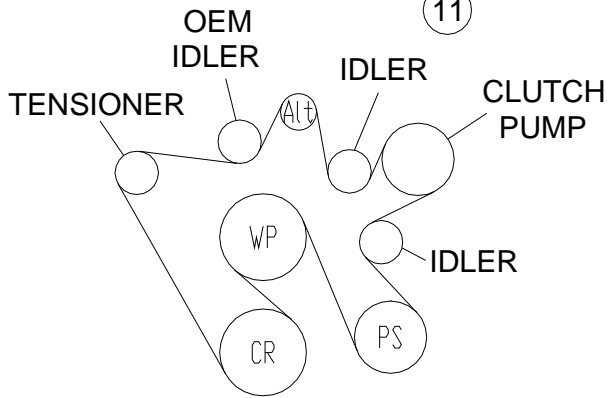
1. Remove O.E.M. belt. Remove bolts from locations “A”, “B”, & “C”. Remove the wire loom clamp located on the driver side frame rail, turn upside down, and reinstall it back to it’s original mounting hole. This is done to gain more clearance between the wire loom and the clutch pump. Remove the O.E.M. vacuum pump; it will not be reused. Twist the tab from the center vacuum port on the passenger side of the intake manifold. This will supply a vacuum source to replace the belt drive vacuum pump. Install the small end of the vacuum hose (12) onto the intake, and route it over, and attach it to the steel vacuum line located on the top of the driver’s side frame rail.
2. Install pump bracket (1) onto the engine using spacer (2) behind the bracket at location “A”, and bolts (3), with lockwashers (4) at locations “A”, “B”, & “C”. Torque bolts to 35 ft/lbs. Install brace (5) to back of bracket (1) using bolts (7), lockwashers (4) flatwashers (8), and to the engine at location “D” using bolt (6) with lockwasher (4). Tighten bolts evenly, then torque them to 35 ft/lb.
3. Install clutch pump (16) onto bracket (1) with bolts (13), lockwashers (14), and nuts (15). Tighten securely. Install coil and clutch as per manufacturer’s instructions. Tighten bolts securely.
4. Install one of the idler assemblies (8, 9, 10, 11) onto bracket (1) at location “E”. Install the belt (19) onto the engine as shown in the diagram. With the belt tensioner fully compressed, install the other idler assembly (8, 9, 10, 11) in the lowest hole possible at locations “F”. Tighten the idler bolt and release the tensioner.

Caution: Check all engine compartment hoses and wiring to insure they are not kinked, touching any high temperature components, coming in contact with any moving parts, or interfering with any linkage.

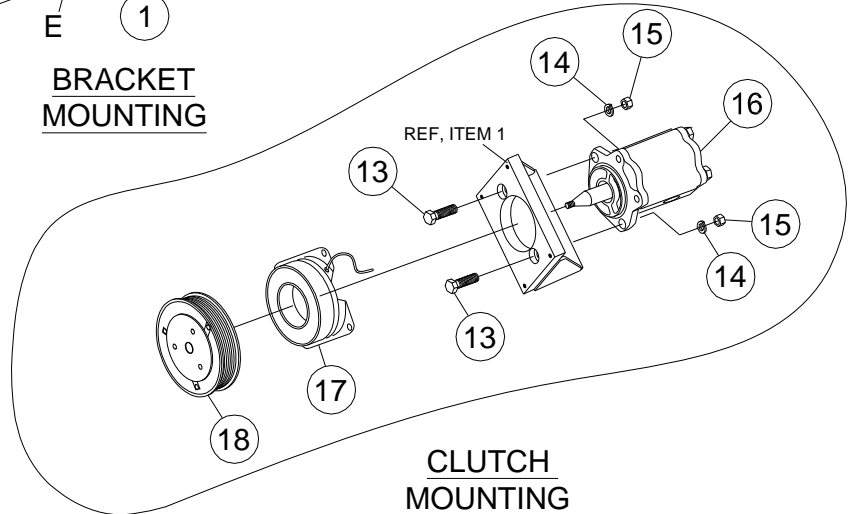
SMK 37A -I6 Belts
2003-09,2012 ISUZU
6.0L(GM)
W-W/OAC



BRACKET MOUNTING



BELT ROUTING



CLUTCH MOUNTING

PARTS LIST

- | | |
|---------------------|---|
| 1. SMB 37A (1) | 11. 89007 (2) |
| 2. SP100-3.293 (1) | 12. Vacuum Line Assembly (1)
SM37VH |
| 3. 10mm x 120mm (3) | 13. 3/8 x 1 1/2 NC (2) |
| 4. 10mm LW (6) | 14. 3/8 LW (2) |
| 5. SMB 372 (1) | 15. 3/8 Nut NC (2) |
| 6. 10mm x 45mm (1) | 16. Clutch Pump Assembly
(Sold Separately) |
| 7. 10mm x 25mm (2) | 17. Coil (Sold Separately) |
| 8. 10mm FW (4) | 18. Clutch (Sold Separately) |
| 9. 10mm x 55mm (2) | 19. 5061223 Dayco |
| 10. SMB 373 (2) | |