



**CW MILL EQUIPMENT CO., INC.**  
**P.O. Box 246 • Sabetha, Kansas 66534**  
**(785) 284-3454 • FAX (785) 284-3601**

**FLMK 91SD508-I8**  
**1999-02 Freightliner FL-60 & 70**  
**1999-02 Sterling w/3126 Cat**

---

## **INSTALLATION NOTES**

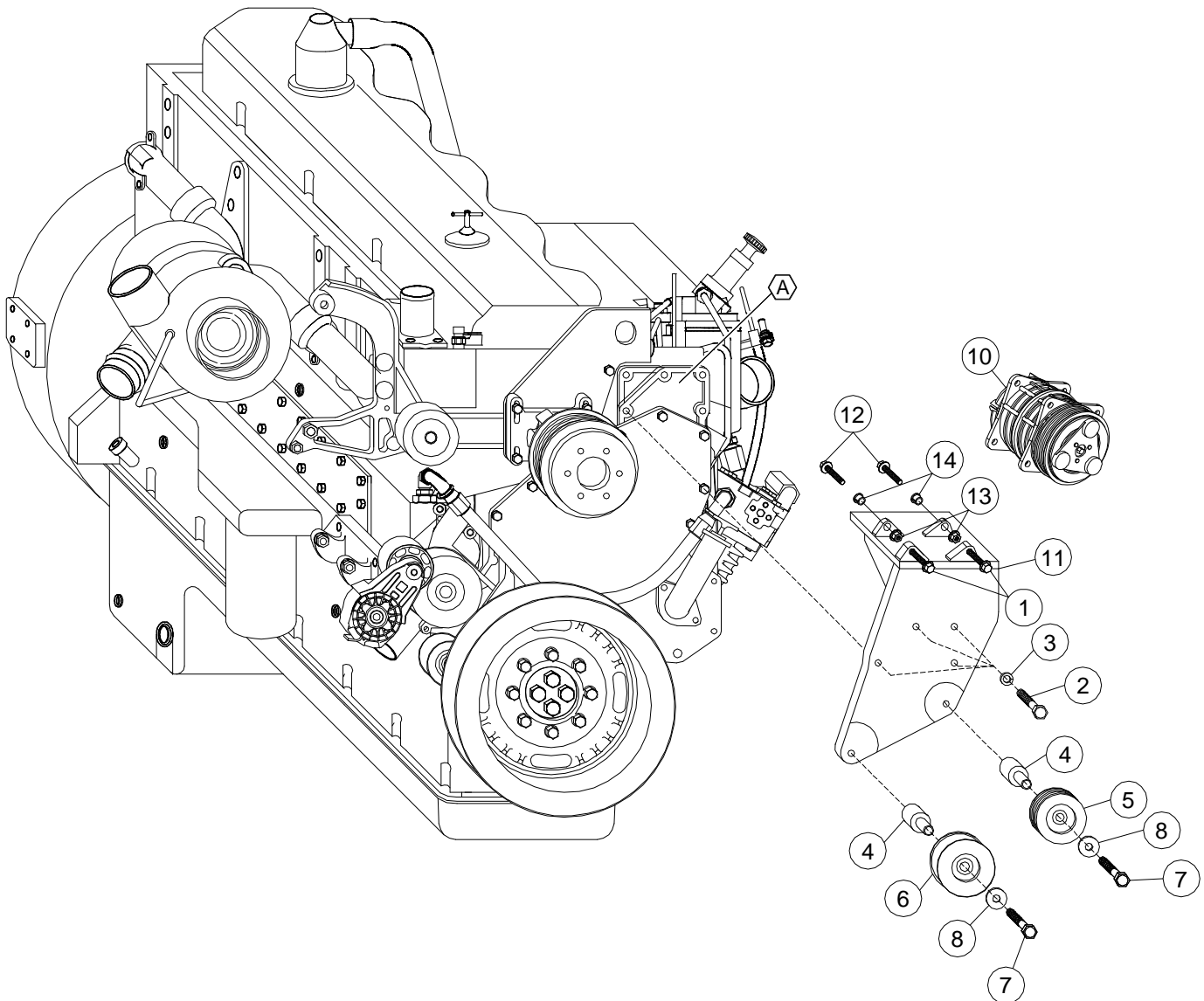
---

1. Disconnect negative battery cable(s). Remove the OEM serpentine belt. Remove any bolts or claps from the block at location "A".
2. Install bracket (1) with bolts (2) and lockwashers (3) at location "A", torque the bolts to 40 ft/lbs.. Install the aux. A.C. compressor (10) onto the bracket with bolts (11,12), nuts (13) and slide bushings (14). Install the flat idler into the bottom hole in the bracket with bushing (4), flat washer (8) and bolt (7). Install the grooved idler onto the bracket at the other location with bushing (4), flatwasher (8) and bolt (7).
3. Install the new belt (9) onto the engine according to the belt diagram. If the belt is too short, move the flat idler up to the next hole. Check all hoses, wires, etc. that may have been moved during installation to make sure they are not rubbing against any moving parts.  
Connect the battery and run the engine to check for proper belt tracking.

# FLMK 91SD508-I8

1999-02 Freightliner FL60 & 70

1999-02 Sterling w/3126 Cat



## PARTS LIST

- |   |  |
|---|--|
| 1. FLMP 91SD508 (1)                     | 8. 12mm LW (2)                           |
| 2. 10mm x 55mm 10.9 (4)                 | 9. Dayco 5081190 (1)                     |
| 3. 10mm LW (4)                          | 10. A.C. Compressor<br>(Sold Separately) |
| 4. FLMB 911 (2)                         | 11. 10mm x 30mm Flange (2)               |
| (GPKDFL91 Assy includes items 4,5,7,8)  | 12. 10mm x 40mm Flange (2)               |
| 5. GPCD8 (1)                            | 13. 10mm Flange Nut (2)                  |
| (IPKDFL91) Assy includes items 4,6,7,8) | 14. 1255-0090 Slide Bushing (2)          |
| 6. IPCD (1)                             |  |
| 7. 12mm x 65mm (2)                      |  |