



CW MILL EQUIPMENT CO., INC.  
P.O. Box 246 • Sabetha, Kansas 66534  
( 785) 284-3454 • FAX (785) 284-3601

**FMK48SD508-8WP**  
2011-2016 Ford Super Duty  
6.2L Triton Gas

## INSTALLATION NOTES

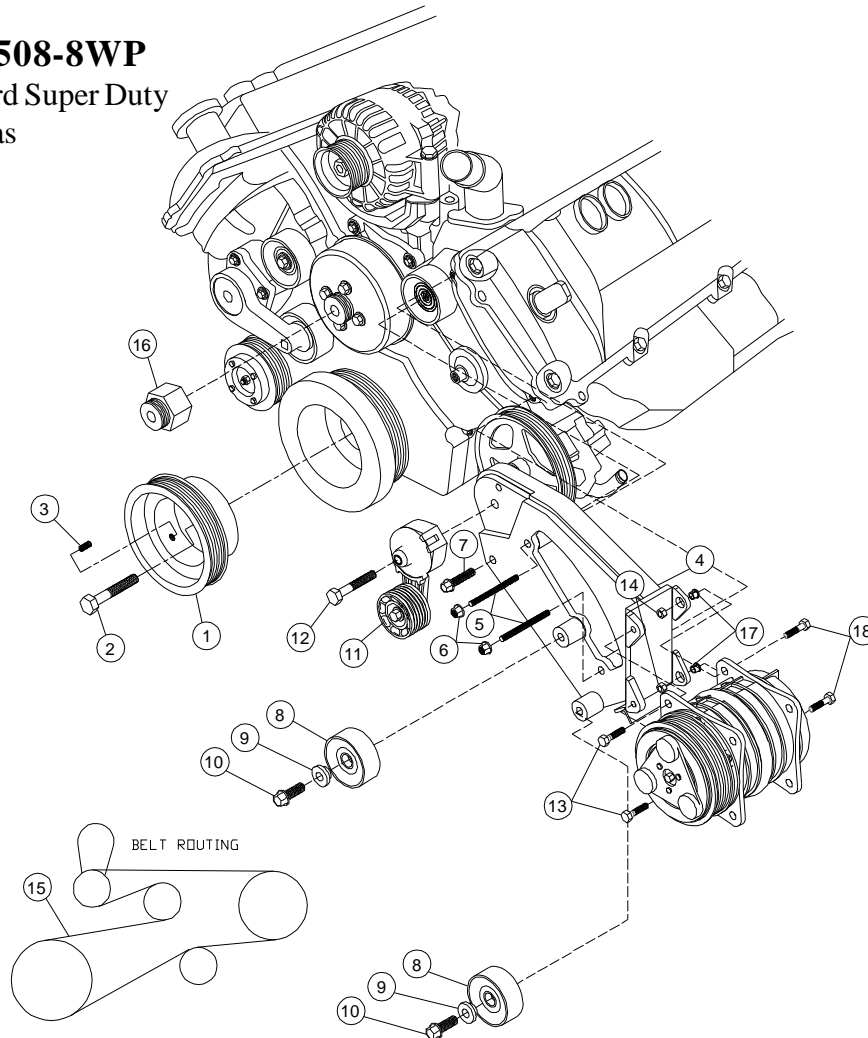
---

1. Disconnect the battery and drain engine coolant. Remove the fan and upper radiator hose, fan has right hand threads. (It is not necessary to remove the fan from the fan shroud, but care must be taken not to damage the radiator). Remove the damper bolt and clean any silicone or dirt from the damper pilot. Install the pump drive pulley (1) using bolt (2). Torque the bolt to 150-160 ft. lbs. Instal set screws (3) into the pulley using a mild grade of loc-tite and turn them in until they just make contact with the damper. Tighten them 1/8 turn at a time untill you reach 35-40 **Inch lbs.** NOTE: ( ALLEN BOLTS MUST BE TIGHTENED EVENLY).
2. Remove the water pump. Install new water pump(32) reusing O.E.M. hardware. Remove the clip holding the hose onto the radiator reservoir and remove the hose. Remove the power steering reservoir from the fan shroud and drain the fluid. Relocate the ABS module rearward with included hardware (19-23). Remove the top two bolts from the drivers side timing cover and install the studs (5).Remove the bolt from the idler on the passenger side, but leave the idler installed. Install the auxiliary A.C. compressor onto the bracket (4) using bolts (13,18) slide bushing (17) and nuts (14). Install the bracket assembly onto the engine with the bottom bushing going over the existing idler location on the timing cover using bolt (7) and nuts (6). Tighten securely. Install the idlers (8) using bushings (9) and bolts (10). Install tensioner (11) using bolt (12). Install the belt (15) as shown in diagram.
3. Replace the upper radiator hose to its original location. Using hose hardware (24-27), reroute the radiator reservoir hose. Approximately 1" can be cut from the nipple on the reservoir to let the 90 degree elbow go on further and gain more clearance to the compressor. Install the power steering reservoir hose extension (28-30). Replace and refill the reservoir. Use hose clamp (31) to secure the power steering hose to the bracket just below the clutch. Install the fan spacer (16) and fan.
4. Make certain all wires and hoses will not come on contact with any hot or moving parts. Run the engine and check for proper belt tracking.

# FMK48SD508-8WP

2011-2016 Ford Super Duty

6.2L Triton Gas



## PARTS LIST

1. FPC488 (1)
2. 14mm x 120mm (1)
3. 8mm x 16mm Set Screw (3)
4. FMP 48SD508-8 (1)
5. 8mm x 130mm Stud (2)
6. 8mm Flange Nut (2)
7. 8mm x 50mm Flange Bolt (1)
8. 89016 Dayco (1)
9. FMB 480 Alignment Bushing (1)
10. 10mm x 30mm Flange Bolt (1)
11. 89213-8 Tensioner (1)
12. 12mm x 65mm Short Head (1)
13. 10mm x 30mm Flange Bolt (2)
14. 10mm Flange Nut (2)
15. 5080750 (1)
16. FSK 6.8A (1)
17. 1255-0090 Slide Bushing (2)
18. 10mm x 40mm Flange Bolt (2)

### ITEMS 19-23 (ABS BRAKE MODULE KIT) NOT SHOWN

19. FMB 481 (Module Bracket) (1)
20. FMB 482 (Module Bracket) (1) 21. FMB 483 (Module Bracket) (1)
22. 8mm x 20mm Flange Bolt (1)
23. 8mm Flange Nut (3)

### ITEMS 24-27 (COOLANT HOSE KIT) NOT SHOWN

24. FMB 484 (Coolant Hose Extension) (1)
25. 4200-16-16 Hose Barb (1)
26. #16 Hose Clamp (3)
27. #20 Hose Clamp (2)

### ITEMS 28-31 (P.S. HOSE KIT) NOT SHOWN

28. 4' of 3/4" Oil Hose (1)
29. 4200-12-12 Hose Barb (1)
30. #12 Hose Clamp (2)
31. #20 Hose Clamp (1)
32. 6.2L Heavy Duty Water Pump (1)