



CW MILL EQUIPMENT CO., INC.
P.O. Box 246 • Sabetha, Kansas 66534
(785) 284-3454 • FAX (785) 284-3601

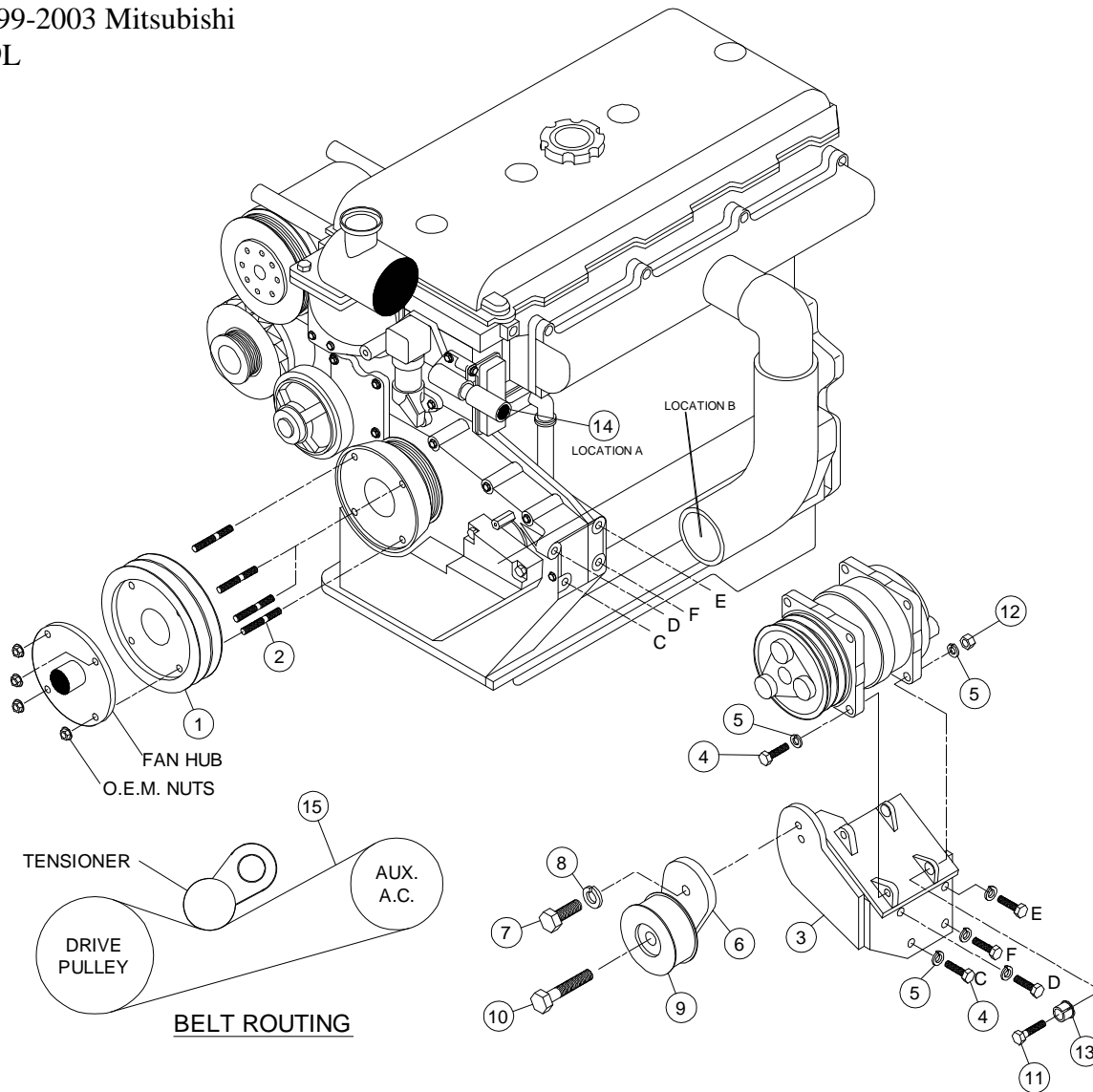
MMK41SD508-2

1999-2003 Mitsubishi
4.9 L

INSTALLATION NOTES

1. Disconnect the negative battery cable. Drain the engine coolant until coolant level is below the thermostat housing. Undo top radiator hose, remove fan and shroud. Remove heater hose (A). Remove turbo tube (B). Remove OEM studs from drive pulley.
2. Install new studs (2) in drive pulley. Install the shroud. Install pulley (1) and the fan with OEM nuts. Install the air conditioner bracket (3) with bolts (4) & lockwashers (5). Be sure to start all bolts before tightening any of the bolts. Reinstall turbo tube. Install replacement heater hose (14) using OEM hose clamps. Install air conditioner compressor with bolts (4) & (11), lockwashers (5), slide bushings (13), and nuts (12). Install belt tensioner (6) with bolt (7) and lockwasher (8). Install idler (9) using bolt (10). Install belts (15). Tension belts (15) by using a wrench on bolt (10) and then tightening bolt (7) once adequate tension is obtained.
3. Replace engine coolant and reconnect battery cable. Run engine and check for proper belt tracking and clearance of all moving parts.

MMK 41SD508-2
 1999-2003 Mitsubishi
 4.9L



PARTS LIST

- 1. MPC 412 (1)
- 2. 8mm x 65mm Stud (4)
- 3. MMP 41SD508-2 (1)
- 4. 10mm x 30mm (6)
- 5. 10mm LW (8)
- 6. MMB 412 (1)
- 7. 12mm x 35mm (1)
- 8. 12mm LW (1)
- 9. IPCD Idler (1)
- 10. 17mm x 2 Lefthand Thread Locktite (1)
- 11. 10mm x 45mm (2)
- 12. 10mm nut (2)
- 13. 1255-0090 Slide Bushing (2)
- 14. MMB 413 Hose (1)
- 15. Goodyear 84490 (2)