



CWMILL EQUIPMENT CO., INC.  
P.O. Box 246 • Sabetha, Kansas 66534  
(785) 284-3454 • FAX (785) 284-3601

## CMK 37 -8 Belt

1996-00 Chevy Truck  
1997-02 CHEVY G-VAN  
C & K 1500,2500,3500  
305,350 W-WO/AC  
W-WO Dual Battery  
(Serpentine)

### INSTALLATION NOTES

1. Disconnect battery terminal. Remove air filter assembly and top half of fan shroud. Remove serpentine belt, fan and pulley on crankshaft. Use wrench provided to hold water pump pulley. Threads are right hand.
2. **IMPORTANT:** Due to variations in O.E.M. pulley make sure both pulleys fully seat together. Install the OEM and pump drive (1) pulley onto the crankshaft; with bolts and lockwashers provided. Secure pulleys.  
**CAUTION:** Be sure bolts provided have same threads as original bolts removed.
3. Remove alternator from O.E.M. mounting bracket. Leave wires attached and lay the alternator out of the way. Remove the heater hose and A/C hose bracket (will not be reused). Remove O.E.M. alternator bracket. Remove two spring steel bushings from alternator bracket to re-use on pump bracket (7).
4. Install pump mounting bracket(7)with bolts(8 and 9)provided. Use Loctite with no lockwasher on(bolt 9) through the counter sunk hole at location "A". Use lockwashers at locations "B & C". Secure bracket.
5. Install the two bushings, and alternator to bracket(7). Transfer both idler and tensioner from O.E.M. bracket to the pump bracket(7). Install tensioner(10)using bolt(11).torque bolts to 37ft/lbs. Install OEM serpentine belt.
6. Install clutch pump(12)to pump plate(7)with bolts provided. Make sure clutch pulley is aligned with the drive pulley(1). Tighten pump bolts securely. Install pump drive belt.Check clearance with belt tensioner. Fan shroud may need notched.
7. Use nylon ties to secure heater hoses out of the way of pump. Use adel clamp to secure AC line to fan shroud.
8. Install fan spacer (6) secure, install fan and secure. Install fan shroud, air filter, connect battery.
9. **CAUTION:** Check all engine compartment hoses that may have been disturbed or re-routed during kit installation to be sure hoses are not kinked, that they do not touch any high temperature item, and that they do not touch any moving components.

**NOTE:** This kit is designed to operate successfully with the standard fan supplied by the manufacturer of your truck. Due to O.E.M. assembly tolerances and change, visually make certain that there is adequate clearance between fan and drive pulley and fan to radiator. It may be necessary to use a different fan spacer for clearance.

## CMK 37 -8 Belt

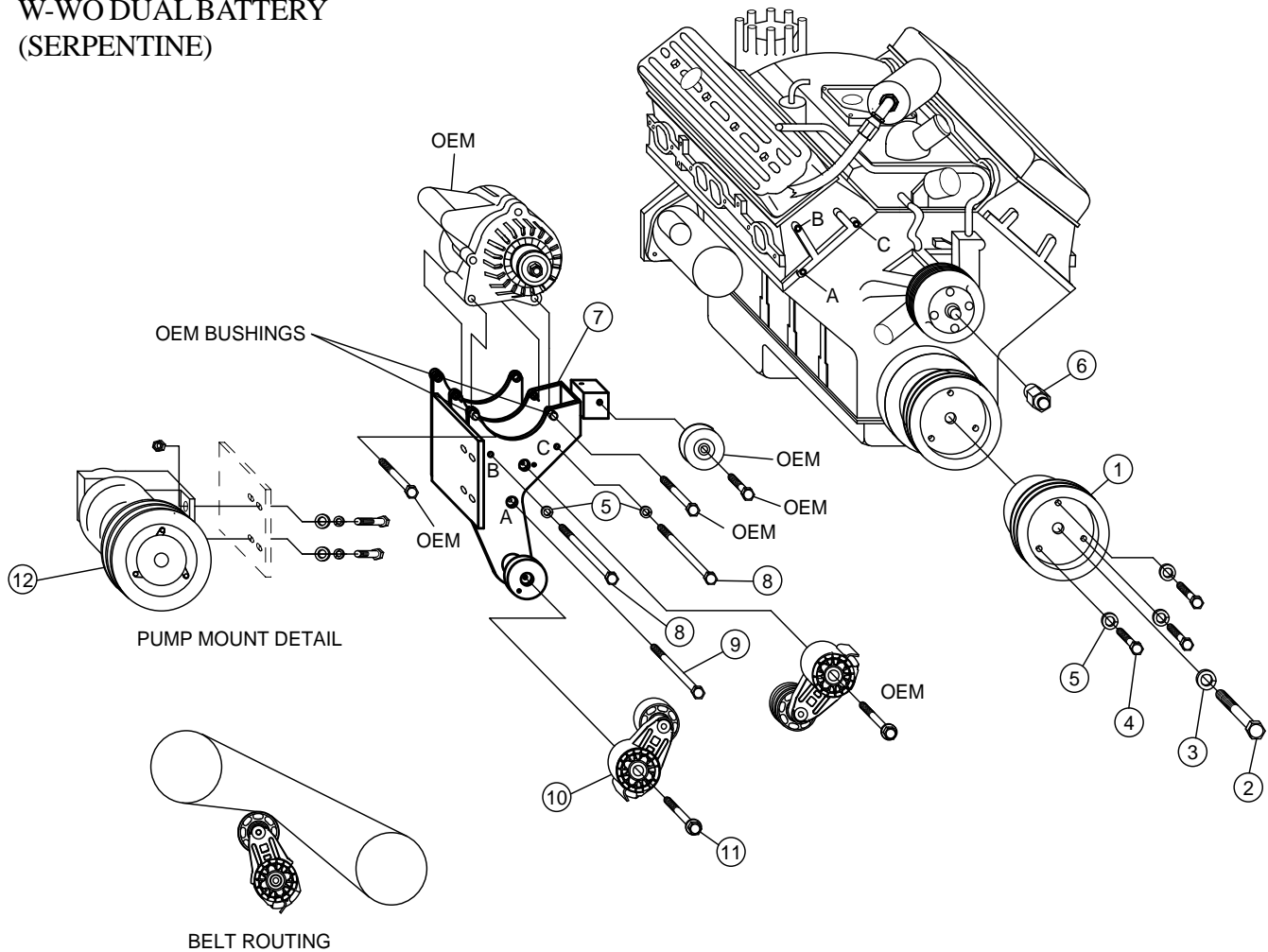
1996-00 CHEVY TRUCK

1997-02 CHEVY G-VAN

305,350 W-WO/AC

W-WO DUAL BATTERY

(SERPENTINE)



## PARTS LIST

- |                             |  |
|-----------------------------|--|
| 1. CPC 358 (1)              | 8. 3/8 x 6 NC GR.8 (1)                             |
| 2. 7/16 x 3-1/2 NC GR.8 (1) | 9. 3/8 x 5-3/4 NC GR.8 (1)                         |
| 3. 7/16 LW (1)              | <u>DAY 89231TIPCS Assembly (items 10 &amp; 11)</u> |
| 4. 3/8 x 2 NF GR.8 (3)      | 10. DAY 89231TIPCS (1)                             |
| 5. 3/8 LW (5)               | 11. 10mm x 75 mm (1)                               |
| 6. FSK 37R (1)              | 12. Clutch Pump Assembly<br>(Sold Separately)      |
| 7. CMBP 37(0-4)S8 (1)       | 13. 5080537 Belt (1) (Not Shown)                   |