



CW MILL EQUIPMENT CO., INC.
P.O. Box 246 • Sabetha, Kansas 66534
(785) 284-3454 • FAX (785) 284-3601

FMK 66 J180-8 ALT
1999-2003 Ford Truck 250-550
7.3 Direct Injected Intercooled Diesel
W-WO/AC or Dual Alternator

INSTALLATION NOTES

1. Disconnect negative battery cable. Drain coolant level below thermostat and remove upper radiator hose.
2. Remove the fan and fan shroud. Remove the O.E.M. alt. and lay it aside. Using a powersteering pulley puller (Snap-on P.N. CJ117, Mac P.N. PP7185M or it's equivalent) remove the powersteering pulley from the pump. Remove the three bolts holding the powersteering pump to the bracket. Remove the O.E.M. powersteering and alt. bracket. Remove the 7.3 cover and it's mount from the engine.
3. Install the new bracket and idler bracket onto the engine using bolts (9 & 10) and lockwashers (3). **Do Not Tighten**. Install the O.E.M. alt. and brace (5) with bolts (16) and flatwashers (18). Install nut, lockwasher and flatwasher (12,13 & 14) at location "A". Tighten the alt. bolts and brace nut finger tight. Tighten the main bracket bolts securely, and then tighten the alt. bolts and nut.
4. Install the powersteering pump using the O.E.M. bolts. Install the powersteering pulley using installer (Snap-on P.N. CJ113B, Mac P.N. PP7005M). Install the O.E.M. belt.
5. Install the serpentine drive pulley using bolts and 2 lockwashers (2 & 3). Tighten securely. Install the tensioner (6) onto the bracket with bolt and lockwasher (7 & 8). Install the J-180 alt. onto the bracket bushing with bolt, nut and lockwasher (19,21 & 22). Install brace (15) onto the main bracket with bolts, nuts & lockwashers (17, 3 & 18), (**Do Not Tighten**), and to the alt. with bolt (20) and lockwasher (21). Tighten alt. bolts evenly and securely. Install idler 26, using shims to align with the drive pulley. Install alt. drive belt. **NOTE:** There is minimal clearance between the back of the alt. and the intercooler tube. It may be necessary to loosen the tube and slide it back to gain clearance.
6. Install fan and fan shroud. Using the O.E.M. radiator hose, cut a 45 degree and use it on the engine and a 90 degree onto the radiator. It may be necessary to trim the fan shroud to provide a good route for the hose. Use the two O.E.M. clamps and the two clamps provided in the kit to connect the hose securely.

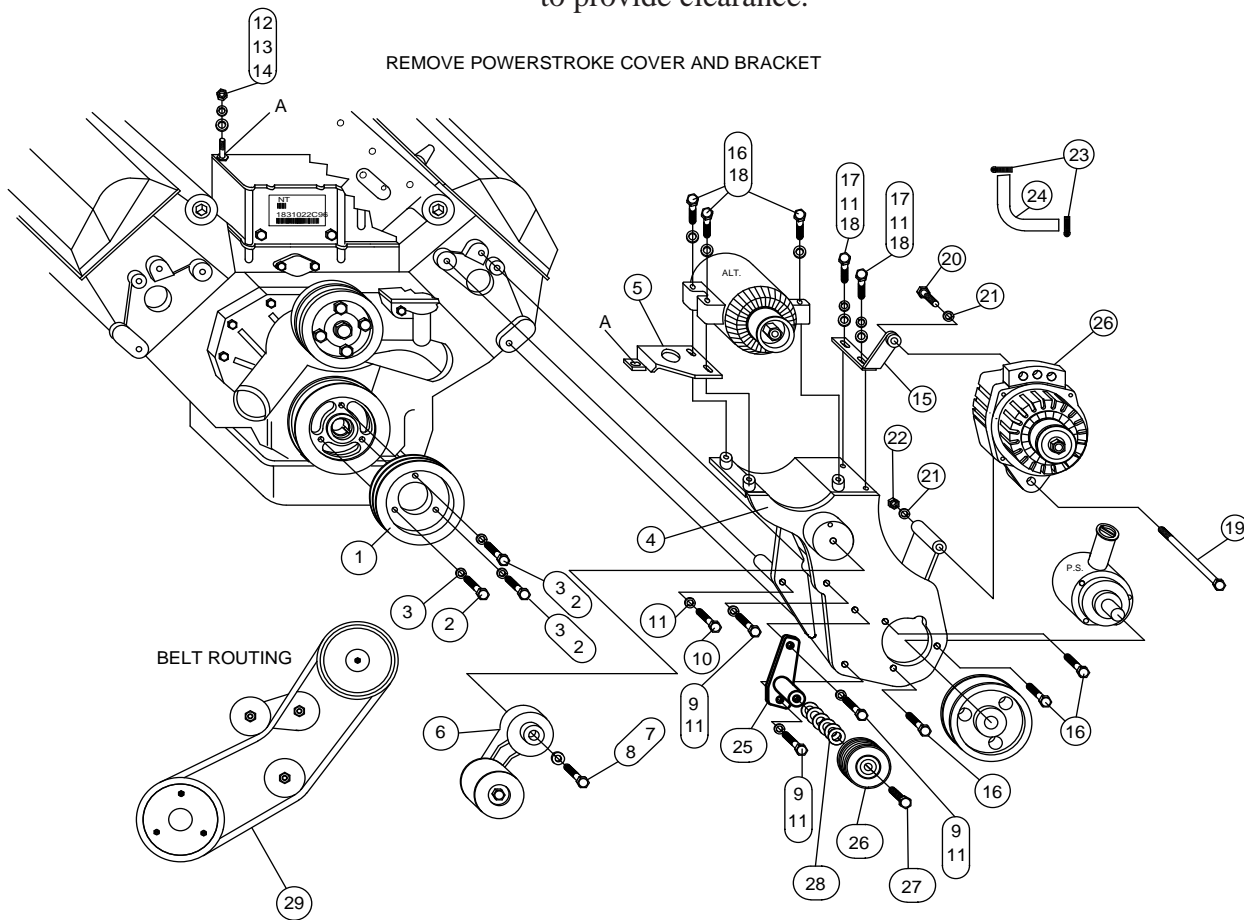
FMK66 J180-8 ALT

1999-2003 Ford Truck 250-550

7.3 D.I.T. Intercooled Diesel

W-WO/AC/Dual Alternator

CAUTION: Due to limited space available in the engine compartment, the pump is mounted directly under the hood light. Check clearance between the light and the pump before closing the hood. If there is not enough clearance, relocate the hood light to provide clearance.



PARTS LIST

- | | |
|-------------------------|-------------------------------|
| 1. FPC 65812 (1) | 16. 10mm x 90mm (3) |
| 2. 10mm X 40mm 1.5 (3) | 17. 10mm x 25mm (2) |
| 3. 10mm LW (3) | 18. 10mm FW (5) |
| 4. FMB 66 (1)J-180 | 19. 1/2 x 6 NC (1) |
| 5. FMB 661 J-180 (1) | 20. 1/2 x 1-1/2 NC (1) |
| 6. 8920236 Dayco (1) | 21. 1/2 LW (2) |
| 7. 12mm X 90mm 1.5 (1) | 22. 1/2 NC (1) |
| 8. 12mm LW (1) | 23. #28 Clamp (2) |
| 9. 10mm X 140mm 1.5 (3) | 24. F66J180 Rad. Line (1) |
| 10. 10mm X 80mm 1.5 (1) | 25. FMB 661 (2) |
| 11. 10mm LW (6) | 26. GPCD 8 (1) |
| 12. 8mm Nut (1) | 27. 5/8 x 2 NC (1) |
| 13. 8mm LW (1) | 28. IPW 14 (6) |
| 14. 8mm FW (1) | 29. 5080645 (Dayco) (1) |
| 15. FMB 662 J-180 | 30. J-180 Alt. (Not included) |