



**IMK 6392V-8**  
2003-07 International  
4200 Series, VT 365 Diesel  
W-W/O AC, W/O Air Compressor

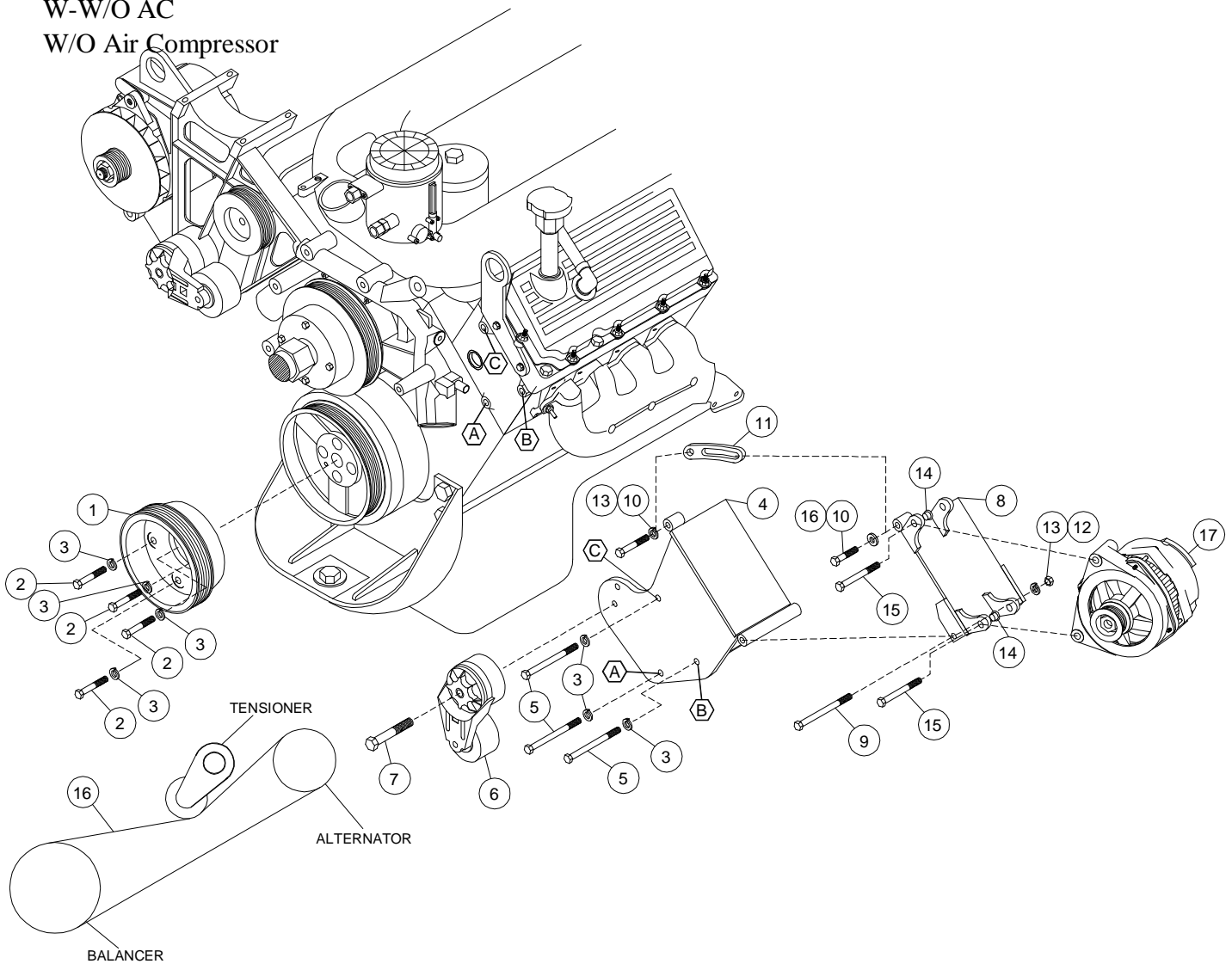
---

## INSTALLATION NOTES

---

1. Install drive pulley (1) onto harmonic balancer using bolts (2) and lockwashers (3). Torque bolts to 40 ft.lbs..
2. Install bracket (4) on the front of the driver side head at locations "A", "B", and "C" with bolts (5) and lockwashers (3). Torque bolts to 40 ft.lbs..
3. Install alternator plate (8) w/bolts (9,10), LW's (13), FW (16), slide (11), and nut (12). install alternator into plate (8) w/bolts (15) and slide bushing (14).. Install tensioner (6) with bolt (7). Install belt (8) as shown in diagram. When installing belt (16) pivot plate (8) to achieve maximum belt tension,
4. Run engine and check for proper belt tracking and clearances.

**IMK 6392V-8**  
 2003-07 International  
 4200 Series  
 VT 365 Diesel  
 W-W/O AC  
 W/O Air Compressor



**BELT ROUTING**

**PARTS LIST**

- |                           |                     |
|---------------------------|---------------------|
| 1. FPC 688 (1)            | 10. 3/8 x 1 (2)     |
| 2. 10mm x 30mm (3)        | 11. IMB63192V (1)   |
| 3. 10mm LW (6)            | 12. 3/8 Nut (1)     |
| 4. IMB6392V (1)           | 13. 3/8 LW (3)      |
| 5. 10mm x 150mm (3)       | 14. 1255-0090 (2)   |
| 6. Tensioner 89200B (1)   | 15. 10mm x 75mm (2) |
| 7. 10mm x 75mm (1)        | 16. 3/8 FW (1)      |
| 8. Belt Dayco 5060605 (1) | 17. Alternator      |
| 9. 3/8 x 6 (1)            | (Sold Separately)   |