



CW MILL EQUIPMENT CO., INC.
P.O. Box 246 • Sabetha, Kansas 66534
(913) 284-3454 • FAX (913) 284-3601

DMK 31 — 2 Belts

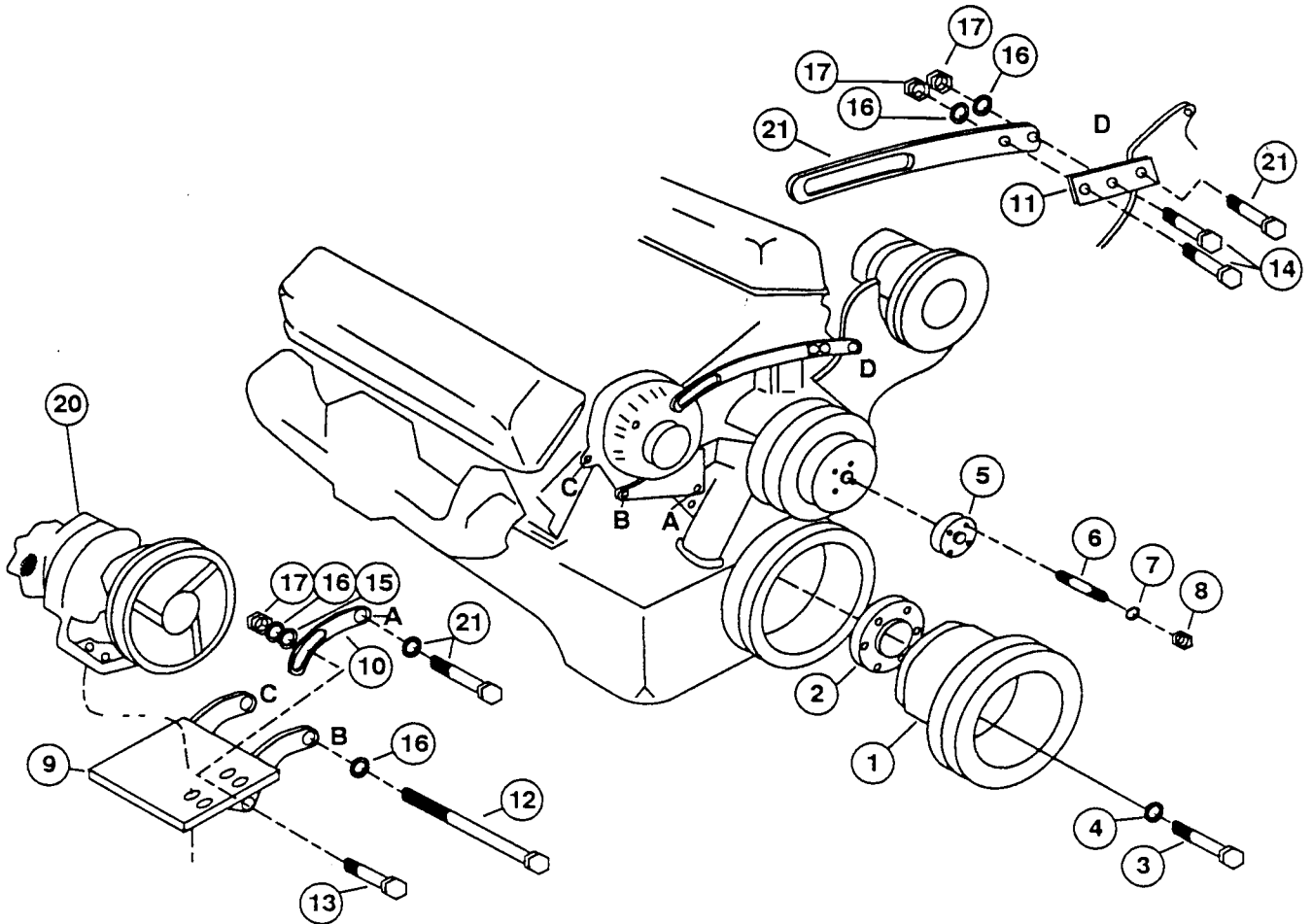
1980-84 DODGE 100,200,300
318, 360 WO/AC,WO/HD ALT.

INSTALLATION NOTES

1. Disconnect battery terminal.
IMPORTANT: Mark fan flange to water pump pulley for proper re-installation. Remove belts and fan.
2. Remove six bolts from pulley on front of crankshaft, do not remove large center bolt. Install drive pulley (1) and spacer (2) with bolts (3) provided. Be sure both pulley and spacer are fully piloted into O.E.M. pulley. **CAUTION:** Be sure bolts are same thread as O.E.M. bolts removed.
3. Remove alternator tension strap (21), alternator hinge bolt, and discard O.E.M. spacer from between alternator and head. Rotate alternator to top of bracket, install pump plate (9) with bolt (12). Attach tension strap (10). **NOTE:** It is necessary to bend the fuel line and dipstick for clearance.
4. Bolt extension strap (11) to alternator tension strap, mark and drill 3/8" hole in tension strap, tighten bolts (14). Remove bolt from location "D" on A.I.R. pump bracket by water pump pulley. Install tension strap at location "D" and to alternator with O.E.M. bolts.
5. Remove fan studs and replace with studs provided (6). Install fan spacer (5) and fan, tighten securely. Align marks from step 1.
6. Mount clutch pump (20) with pump bolts to bracket (9). Make sure clutch pulley is in line with drive pulley (1). Tighten pump bolts securely.
7. Replace alternator belt with belt (18) supplied, install original power steering belt and tension both belts. Leave alternator pivot bolt loose.
8. Install pump drive belts (19). Adjust pump bracket (9) for proper belt tension. Tighten bolts (12 & 13) on pump bracket and bolt (21) at location "A". Connect battery terminal.
9. **CAUTION:** Check all engine compartment hoses and electrical wiring that might have been disturbed or re-routed during kit installation to be sure that hoses are not kinked, that they do not touch any high temperature items, and that they do not interfere with any linkage components.

NOTE: This kit is designed to operate successfully with the standard fan supplied by Dodge. Due to O.E.M. assembly tolerances, visually make certain that there is adequate clearance between the fan and drive pulley, and also the fan to radiator. It may be necessary to use a longer spacer for pulley clearance. If there is little clearance to the radiator, check with the Dodge dealer to insure that it will not flex into the radiator while operating. It is not uncommon for the fan to flex over 3/4 inch under full acceleration. Provide adequate clearance between fan and radiator before operating. Move radiator forward if necessary.

DMK 31- 2 Belts
 1980-84 DODGE 318, 360
 WO/AC,WO/H.D. ALT.



PARTS LIST

- | | |
|--------------------------|---|
| 1. DPC 322 (1) | 11. DMB 312 (1) |
| 2. DPA 322 (1) | 12. 3/8 X 6 NC (1) |
| 3. 5/16 X 2 NC Gr. 8 (6) | 13. 3/8 X 1-1/2 NC (1) |
| 4. 5/16 LW (6) | 14. 3/8 X 1 NC (2) |
| 5. FSO 503 (1) | 15. 3/8 FW (1) |
| 6. 5/16 X 2 DST (4) | 16. 3/8 LW (4) |
| 7. 5/16 LW (4) | 17. 3/8 NC (3) |
| 8. 5/16 NF (4) | 18. 15470 (1) Alternator Belt (Not Shown) |
| 9. DMP 31 (0-4) (1) | 19. AX-51 (2) (Not Shown)(#2-AX-50, #4-AX-49) |
| 10. DMB 311 (1) | 20. Clutch Pump (1) (Sold Separately) |
| | 21. O.E.M. |