



CW MILL EQUIPMENT CO., INC.  
P.O. Box 246 • Sabetha, Kansas 66534  
(785) 284-3454 • FAX (785) 284-3601

## DMK33 -2 Belts

1984-87 DODGE 360

W-WO/AC, H.D. ALT. -

WITH REMOTE PS RESERVOIR

### INSTALLATION NOTES

1. Disconnect battery terminal. Loosen belts and remove fan. Unbolt remote power steering reservoir and lay aside. **IMPORTANT: Mark fan flange to water pump pulley for proper re-installation.**
2. Remove six bolts from pulley on front of crankshaft, do not remove large center bolt. Install drive pulley (1) and spacer (2) with bolts (3) provided. Be sure both pulley and spacer are fully piloted into O.E.M. pulley.
3. **Power steering pump outside A.I.R. pumps** - Remove lower bolt on power steering pump at location "A". Install bracket (9) around power steering pump using spacer (13) and bolt (15).  
**NOTE:** For extra bracing two extra braces (11 & 12) are supplied if extra support is desired. Replace spacer (13) with spacer (14) and short brace (11), spacer (14) is next to PS pump. Determine proper length of brace (12) and shorten if necessary. Use spacer (14) between brace (12) and shorten if necessary. Use spacer (14) between brace (12) and bracket (9) at location "D". Bolt braces (11 & 12) at location "F". Bolt slotted bracket (10) to pump bracket at location "C". Tilt bracket (9) toward motor as far as possible. Holding slotted bracket (10) level against upper A.I.R. pump mounting bracket, mark and drill 7/16" hole from motor side for location "E". Bolt slotted bracket (10) to location "E".  
**A.I.R. pumps outside power steering pump** - Remove pivot bolt from lower A.I.R. pump. Install bracket (9) around A.I.R. pump using bolt (15) and spacer (13) if necessary. Bolt slotted bracket (10) to pump bracket (9) at location "C" and adjustment bracket of top A.I.R. pump. Attach slotted bracket (11) to pump bracket at location "D" and lower bolt of the top A.I.R. pump.
4. Remove fan studs and replace with provided studs (6). Install fan spacer (5) and fan, tighten securely.
5. Mount clutch pump (25) with pump bolts to bracket (9). Make sure clutch pulley is in line with drive pulley (1). Tighten pump bolts securely.
6. Install pump drive belts (24). Adjust pump bracket (9) for proper belt tension. Tighten bolts (15 & 16) on pump bracket.
7. Hold power steering reservoir to tab on pump bracket. Determine extra length of hose needed to properly clear pump bracket and allow reservoir to bolt to tab. Cut supplied hose (22) to length required. Use hose coupler (21) and clamps (23) to secure hose (22) to reservoir. Bolt reservoir to tab. Add power steering fluid to proper level.
8. Tighten all belts. Connect battery terminal.
9. **CAUTION:** Check all engine compartment hoses and electrical wiring that might have been disturbed or re-routed during kit installation to be sure that hoses are not kinked, that they do not touch any high temperature items, and that they do not interfere with any linkage components.

**NOTE:** This kit is designed to operate successfully with the standard fan supplied by Dodge. Due to O.E.M. assembly tolerances, visually make certain that there is adequate clearance between fan and drive pulley, and also fan to radiator. It may be necessary to use a longer spacer for pulley clearance. If there is little clearance to the radiator, check with the truck dealer to insure that it will not flex into the radiator before operating.

**It is not uncommon for the fan to flex over 3/4 in. under full acceleration.**

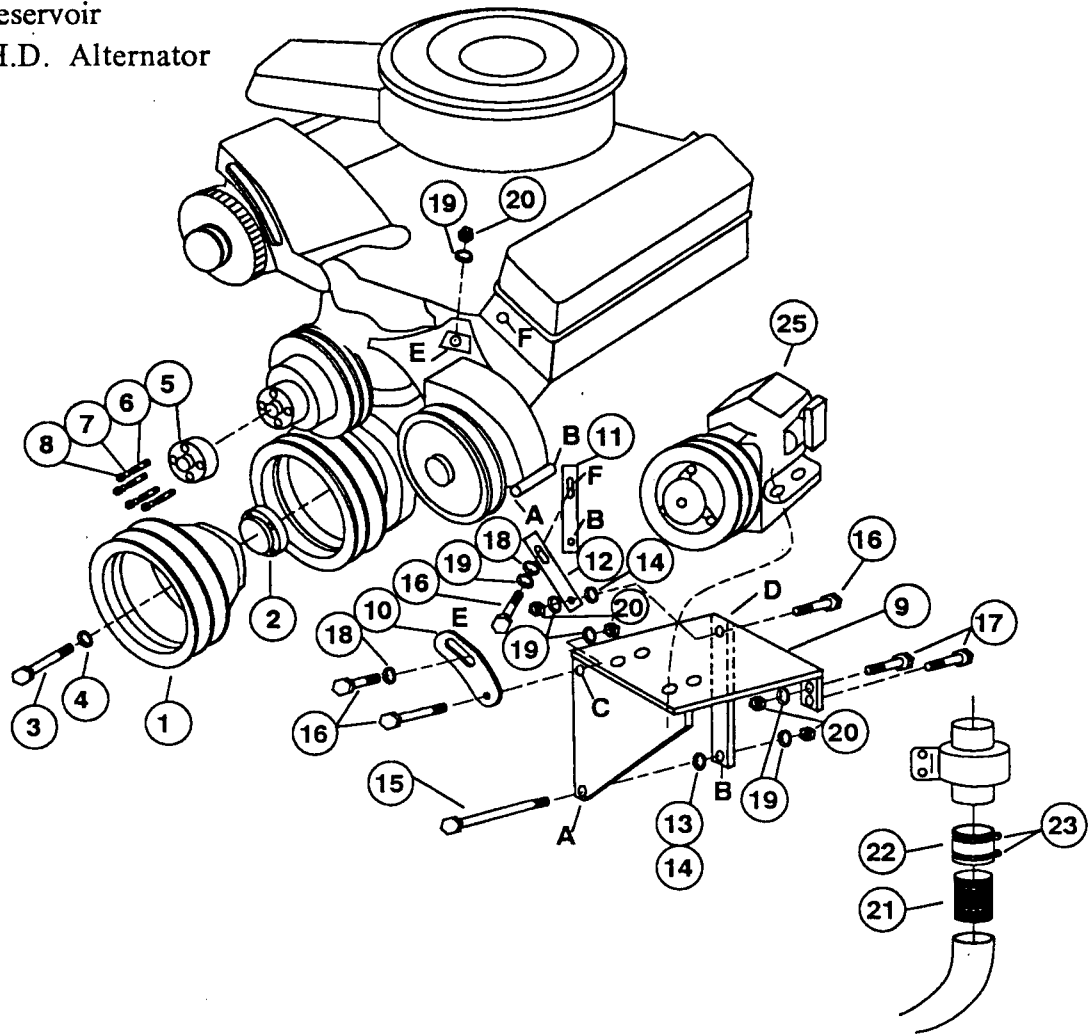
Provide adequate clearance between fan and radiator before operating.

# DMK33 -2 Belts

1984-87 DODGE 360

Remote PS Reservoir

W-WO/AC, H.D. Alternator



## PARTS LIST

- |                         |                                   |
|-------------------------|-----------------------------------|
| 1. DPC 322 (1)          | 14. SP88-0.250 (3)                |
| 2. DPA 322 (1)          | 15. 3/8 X 6-1/2 NC (1)            |
| 3. 5/16 X 2 NC GR 8 (6) | 16. 3/8 X 1-1/2 NC (8)            |
| 4. 5/16 LW (6)          | 17. 3/8 X 1-1/4 NC (2)            |
| 5. FSO 503 (1)          | 18. 3/8 FW (6)                    |
| 6. 5/16 X 2 DST (4)     | 19. 3/8 LW (11)                   |
| 7. 5/16 LW (4)          | 20. 3/8 NC (10)                   |
| 8. 5/16 NF (4)          | 21. 5/8 Coupler (1)               |
| 9. DMP 33(0-4) (1)      | 22. 5/8 Hose (1 ft.)              |
| 10. DMB 331 (1)         | 23. 5/8 Clamps (2)                |
| 11. DMB 332 (1)         | 24. AX-63 (2) (#2 AX-63,#4 AX-61) |
| 12. DMB 333 (1)         | 25. Clutch Pump Assembly (1)      |
| 13. SP88-0.500 (1)      | (Sold Separately)                 |

NOTE: Contact factory if longer fan spacer is necessary.

NOTE: With 7" clutch #2 AX-63, #4 AX-63.