



CW MILL EQUIPMENT CO., INC.
P.O. Box 246 • Sabetha, Kansas 66534
(913) 284-3454 • FAX (913) 284-3601

DMK 34 — 2 Belts

DODGE 100,150,250,350

1988-91 318-360

1992-360 W-WO/AC, H.D. ALT.

(Non-Serpentine)

INSTALLATION NOTES

1. Disconnect battery terminal. **IMPORTANT:** Mark fan flange to water pump pulley for proper re-installation. Remove belts and fan.
2. Remove six bolts from pulley on front of crankshaft, do not remove large center bolt. Install drive pulley (1) and spacer (2) with bolts (3) provided. Be sure both pulley and spacer are fully piloted into O.E.M. pulley. **CAUTION:** Be sure bolts are same thread as O.E.M. bolts removed.
3. Remove alternator hinge bolt at location "A". At location "B" remove threads from alternator bracket with a 25/64" drill bit. Remove bolt at location "C". Install pump bracket (9) with bolts (12 & 13), use heavy flat washer at location "C".
4. Remove bolt at location "E", install bracket (10) with bolts (14) and spacer (11) as shown. Leave bolts loose at all locations loose.
5. Remove fan studs and replace with studs provided (6). Install fan spacer (5) and fan, align marks from step one, tighten securely.
6. Mount clutch pump (20) with pump bolts to bracket (9). Make sure clutch pulley is in line with drive pulley (1). Tighten pump bolts (14) securely.
7. Replace and tension alternator and power steering belts. Shorter alternator belts may be necessary if belts contact bolt (12).
8. Install pump drive belts (19). Adjust pump bracket (9) for proper belt tension. Tighten bolts (12,13, &14) on pump bracket at all locations.

CAUTION: Check all engine compartment hoses and electrical wiring that may have been disturbed or re-routed during kit installation to be sure that hoses are not kinked, that they do not touch any high temperature items, and that they do not interfere with any linkage components.

NOTE: This kit is designed to operate successfully with the standard fan supplied by Dodge. Due to O.E.M. assembly tolerances, visually make certain that there is adequate clearance between the fan and drive pulley, and also the fan to radiator. It may be necessary to use a longer spacer for pulley clearance. If there is little clearance to the radiator, check with the truck dealer to insure that it will not flex into the radiator before operating. It is not uncommon for the fan to flex over 3/4 inch under full acceleration. Provide adequate clearance between fan and radiator before operating. Move radiator forward if necessary.

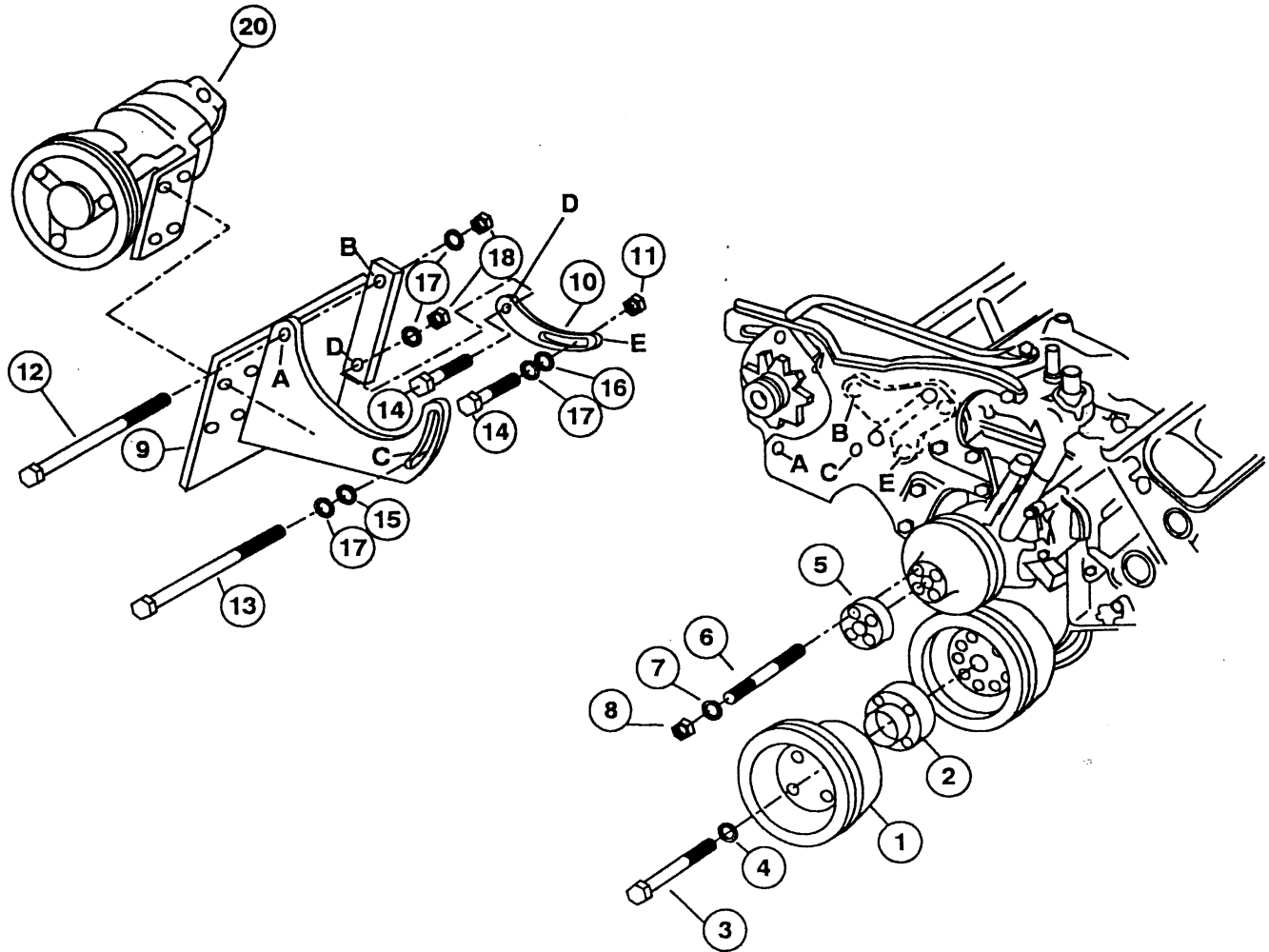
DMK 34- 2 Belts

DODGE 100,150,250,350

1988-91 318-360

1992 (360 only)

W-WO/AC, H.D. ALT.



PARTS LIST

- | | |
|--------------------------|---|
| 1. DPC 322 (1) | 11. SP88-0.137 (1) |
| 2. DPA 322 (1) | 12. 3/8 X 6 NC (1) |
| 3. 5/16 X 2 NC GR. 8 (6) | 13. 3/8 X 5-1/2 NC (1) |
| 4. 5/16 LW (6) | 14. 3/8 X 1-1/2 NC (2) |
| 5. FSO 503 (1) | 15. 3/8 HFW (1) |
| 6. 5/16 X 2 DST (4) | 16. 3/8 FW (5) |
| 7. 5/16 LW (4) | 17. 3/8 LW (4) |
| 8. 5/16 NF (4) | 18. 3/8 NC (2) |
| 9. DMP 34 (0-4) (1) | 19. AX-59 (2) (Not Shown) (#2-AX-59, #4-AX-55) |
| 10. DMB 311 (1) | 20. Clutch Pump Assembly (1)
(Sold Separately) |

NOTE: With 7" Clutch #2-AX-59 and #4-AX-57.