



CW MILL EQUIPMENT CO., INC.
P.O. Box 246 • Sabetha, Kansas 66534
(785) 284-3454 • FAX (785) 284-3601

DMK 54 -2 Belts
1998-2002 Dodge D-250,350
5.9 I.S.B. Cummins Diesel
W-WO/AC

INSTALLATION NOTES

1. Disconnect the negative battery cables from both batteries. Remove clutch fan assembly using 1 7/16 wrench (19) provided, threads are left hand.
NOTE: Fan shroud does not need to be removed, take care not to damage radiator with fan.
2. Remove serpentine belt and fan pulley. Install drive pulley (1) with bolts and lockwashers (2 & 3).
3. Remove alternator from mounting bracket and lay aside. Remove upper alternator bracket and engine lifting lug. Remove bolt holding wire loom that crosses front of engine.
4. Install pump bracket (4) with bolts (7 & 10), leave belts loose. Install alternator to bracket (4) with bolts (5 & 6). Tighten all bolts.
5. Install clutch pump (21) with bolts provided. Align clutch pulley to drive pulley (1) tighten pump bolts.
6. Install belt tension idler (12) using shim washers (15) to align with idler, with clutch and drive pulleys.
7. Install O.E.M. serpentine belt and tensioner (trucks not equipped with A/C must have a new belt installed; Dayco #5080600 or equivalent-*not included in kit*). Install pump drive belts (20) and tension by adjusting bolt (17), tighten nuts (16 & 18).
8. Secure wire loom and connect battery cables.

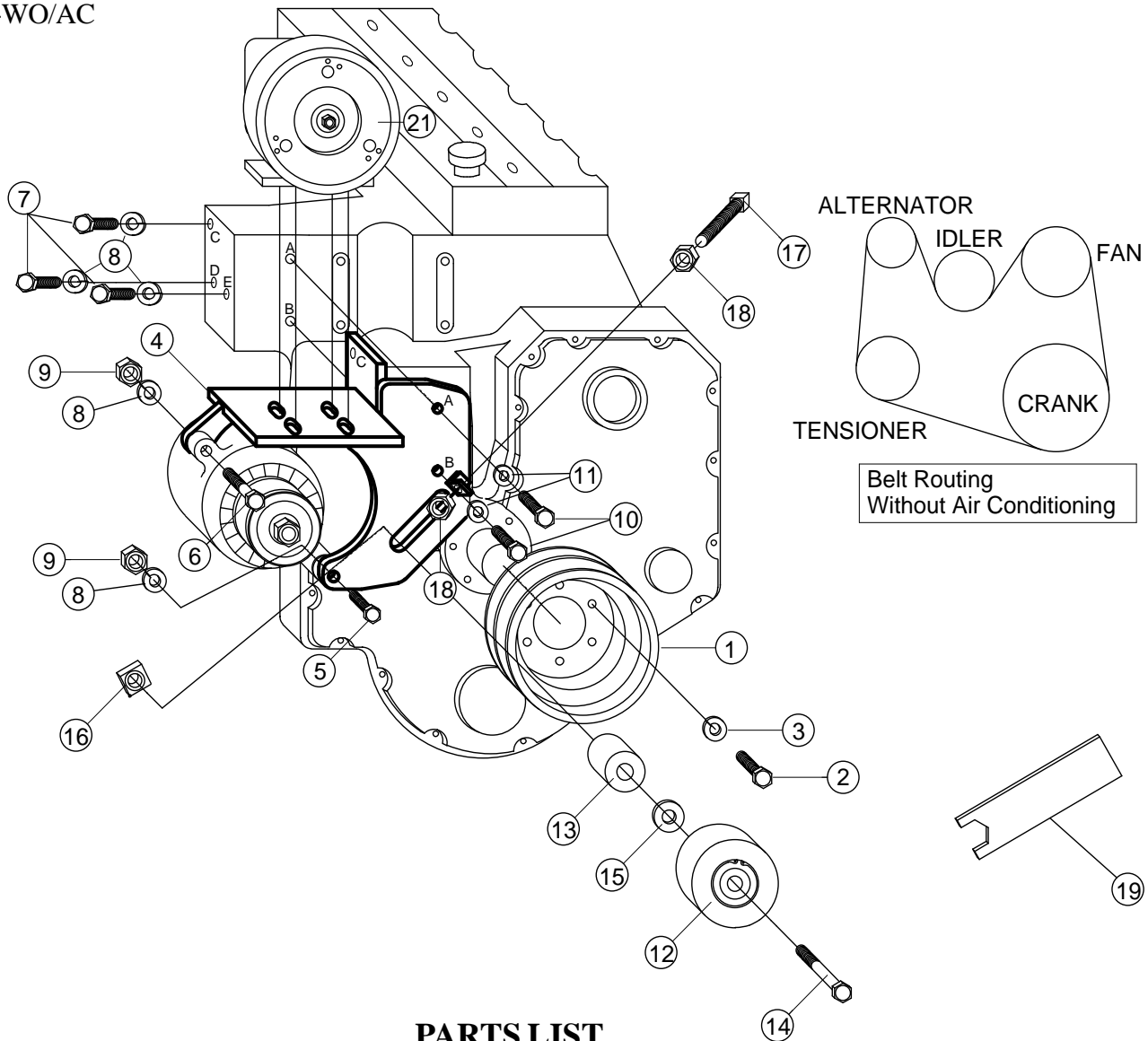
CAUTION: Check all engine compartment vacuum hoses and electrical wiring that may have been disturbed or re-routed during kit installation to be sure that hoses are not kinked, that they do not touch any high temperature item, and that they do not interfere with any linkage components.

DMK 54 -2 Belts

1998-2002 Dodge Truck 250,350

5.9 I.S.B. Cummins Diesel

W-WO/AC



PARTS LIST

- | | |
|-------------------------|---|
| 1. DPC 512 (1) | <u>IPKD-54 Idler Assembly (items 12-16)</u> |
| 2. 6mm x 16mm 1.0 (6) | 12. IPCD Idler (1) |
| 3. 6mm LW (6) | 13. SP175-1.25TH (1) |
| 4. DMP 54 (0-4) (1) | 14. 5/8 x 4 NC (1) |
| 5. 10mm x 120mm 1.5 (1) | 15. IPW14 Shim (7) |
| 6. 10mm x 60mm 1.5 (1) | 16. 5/8 NC SQ. Head Nut (1) |
| 7. 10mm x 30mm 1.5 (3) | 17. 3/8 x 3 1/2 Set Screw (1) |
| 8. 10mm LW (5) | 18. 3/8 NC Nut (2) |
| 9. 10mm 1.5 Nut (2) | 19. 1 7/16 Wrench (1) |
| 10. 8mm x 30mm 1.25 (2) | 20. Belts (Not Shown) (2) |
| 11. 8mm LW (2) | Goodyear A47F |
| | #2 & #4 Dayco A46F |
| | 21. Clutch Pump Assembly |
| | (Sold Separately) |

NOTE: With 7" #2 A48F, #4 A48F.