



CW MILL EQUIPMENT CO., INC.
P.O. Box 246 • Sabetha, Kansas 66534
(785) 284-3454 • FAX (785) 284-3601

DMK 55 -6 Belt
2003-07 Dodge R-250,350
5.9 I.S.B. Cummins Diesel
With A/C only

INSTALLATION NOTES

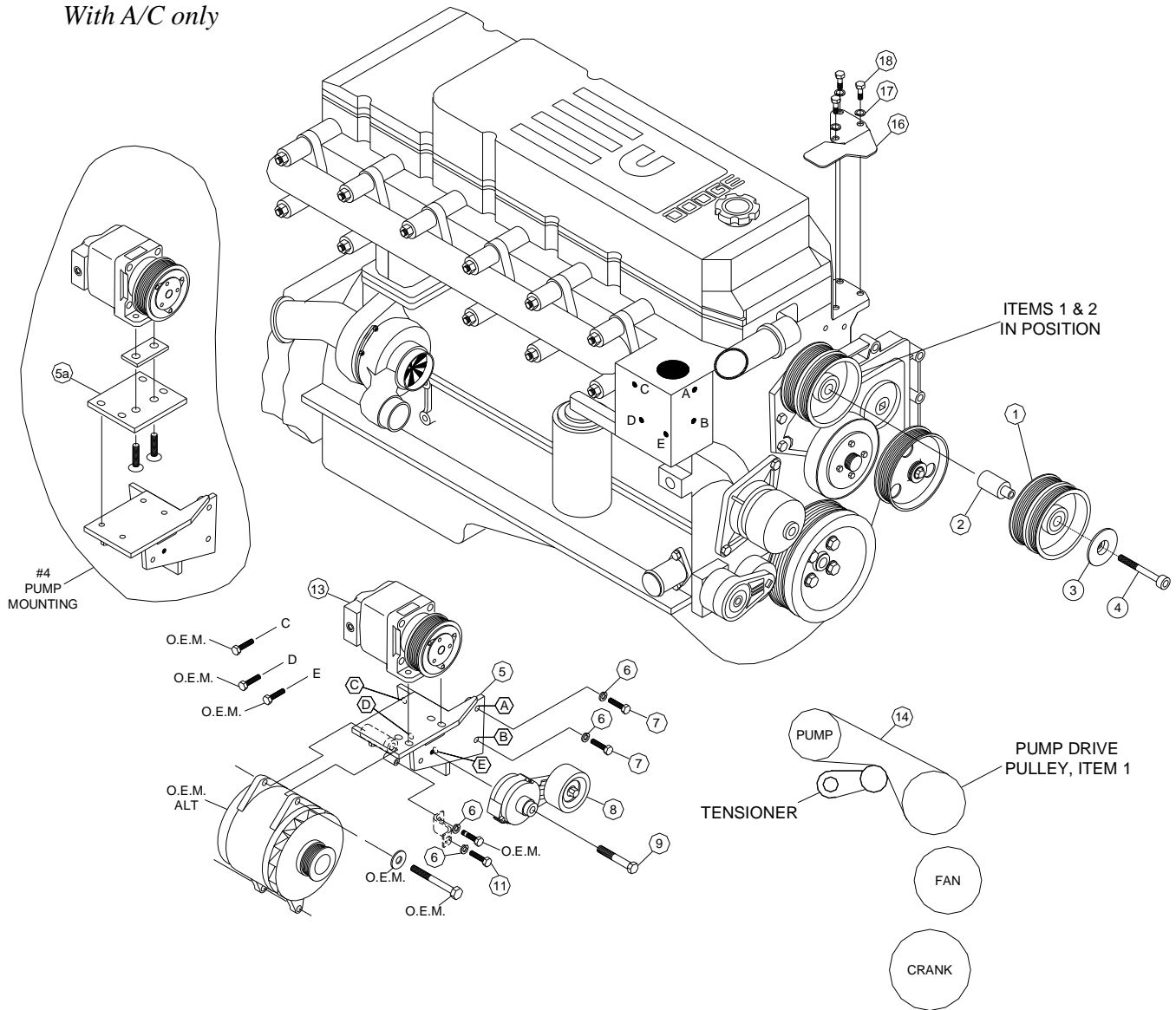
1. Disconnect the negative battery cables. Drain the engine coolant until the water level is several inches below the upper radiator hose. Remove the air cleaner assembly. Disconnect the fan clutch wire at the bottom of the fan shroud and remove the wire from the fan shroud. Remove the fan (*fan nut has right hand threads*), fan shroud and coolant reservoir from the engine compartment. Trucks with a build date of Jan. '04 and later will not require the removal of the radiator reservoir, but will require the removal of the fan shroud brace located high on the passenger side.
2. Remove the serpentine belt. Remove the upper alternator bolt and loosen the lower bolt. Swing the alternator towards the fender. Remove the alternator bracket and the engine lifting lug, they will not be reused.
3. Move the wire loom that runs across the front of the engine behind the thermostat housing. Install the main bracket reusing the three 10mm alternator bracket bolts at locations "C", "D" and "E" and bolts (7) with lockwashers (6) at locations "A" and "B". Use O.E.M. bolt at location "A". Tighten bolts evenly. Raise the alternator until the hole in the alternator aligns with the bushing on the bracket. Install the OEM alternator bolt. If the truck has a build date of Jan. '04 or later, attach shroud brace (10) with bolt (11) and lockwasher (6), and flatwasher (12).
4. Remove the grooved idler from the top of the engine and replace it with the idler pulley assembly (1 through 4). Install the OEM serpentine belt to its original routing. Install the clutch pump (13) with bolts provided. Align the clutch pulley with the drive pulley then tighten bolts. Install the pump belt tensioner (8) onto the bracket with bolt (9). Install the pump drive belt according to the diagram.
5. Replace the fan, fan shroud and coolant reservoir. If the truck has a build date of Jan. '04 or later, the fan shroud will need trimmed for adequate clearance. Drill a 3/8 hole in the shroud for brace (10) and use bolt (11), flatwasher (12), and lockwasher (6) to secure shroud. **NOTE:** Coolant reservoir must be installed with the fan shroud. Connect the fan clutch wire. Replace the upper radiator hose. Remove the filter minder from the air cleaner cover and replace it with the aluminum plug. Install the air cleaner assembly. Replace the engine coolant. Connect battery cables. Run the engine and check for proper belt tracking. Adjust if necessary.

DMK 55-6 Belt

2003-07 Dodge, R-250, 350

5.9 ISB Cummins Diesel

With A/C only



BELT ROUTING

PARTS LIST

DPC556DA INCLUDES ITEMS (1-4)

- | | |
|-----------------------------------|--|
| 1. DPC 556D (1) | 11. 8mm x 25mm Bolt (1) |
| 2. DMB 550D (1) | 12. 8mm FW (1) |
| 3. DMB 554 (1) | 13. Clutch Pump <i>(Sold Separately)</i> |
| 4. 10mm x 100mm SHCS (1) | 14. Pump drive belt Dayco 5060415 (1) |
| 5. DMP 552 (1) | #2 Dayco 5060410 (1) |
| 5a DMP 554 (1) #4 pump mount only | #4 Dayco 5060405 (1) |
| 6. 8mm LW (3) | 15. DMB 552 (1) Aluminum plug |
| 7. 8mm x 35mm Bolt (2) | 16. DMB 553 (1) |
| 8. 8920236 (1) | 17. 10 mm FW (3) |
| 9. 12mm x 80mm Bolt (1) | 18. 10mm X 20mm bolt(3) |
| 10. DMB 551 Brace (1) | |