



CW MILL EQUIPMENT CO., INC.  
P.O. Box 246 • Sabetha, Kansas 66534  
(785) 284-3454 • FAX (785) 284-3601

**DMK 55A -6 Belt**  
2003-07 Dodge R-250,350  
5.9 I.S.B. Cummins Diesel  
*With A/C only*

## INSTALLATION NOTES

---

1. Disconnect negative battery cables. Drain engine coolant until water level is several inches below upper radiator hose. Remove air cleaner assembly. Disconnect fan clutch wire at the bottom of the fan shroud and remove wire from fan shroud. Remove the fan (*fan nut has right hand threads*), fan shroud, and coolant reservoir from the engine compartment.
2. Remove serpentine belt. Remove upper alternator bolt and loosen lower bolt. Swing alternator towards the fender. Remove alternator bracket and engine lifting lug. Discard both items.
3. Move wire loom that runs across front of engine behind the thermostat housing. Install main bracket reusing 10mm alternator bracket bolts at locations "C", "D", and "E". Use bolts (7) with lock washers (6) at locations "A" and "B". Tighten bolts evenly. Raise alternator until hole in alternator aligns with bushing on bracket. Install OEM alternator bolt. If truck has a build date of Jan. '04 or later, use shroud brace (10) with OEM alternator bolt. Tighten both alternator bolts.
4. Remove grooved idler from top of engine and replace it with idler pulley assembly (1 through 4). Install OEM serpentine belt to its original routing. Install clutch pump (15) with bolts (19), flat washers (16), lock washers (17), and nuts (18). Align clutch pulley with drive pulley; then tighten bolts. Install pump belt tensioner (8) onto bracket with bolt (9). Install pump drive belt according to the diagram.
5. Replace fan, fan shroud and coolant reservoir. If truck has a build date of Jan. '04 or later, the fan shroud will need trimmed for adequate clearance. Drill a 3/8 hole in shroud for brace (10) and use bolt (11), flatwasher (13), lockwasher (12), and nut (14) to secure shroud. **NOTE:** Coolant reservoir must be installed with fan shroud. Connect fan clutch wire. Replace upper radiator hose. Remove filter minder from the air cleaner cover and replace it with grommet plug. Install air cleaner assembly. Replace engine coolant. Connect battery cables. Run engine and check for proper belt tracking. Adjust if necessary.

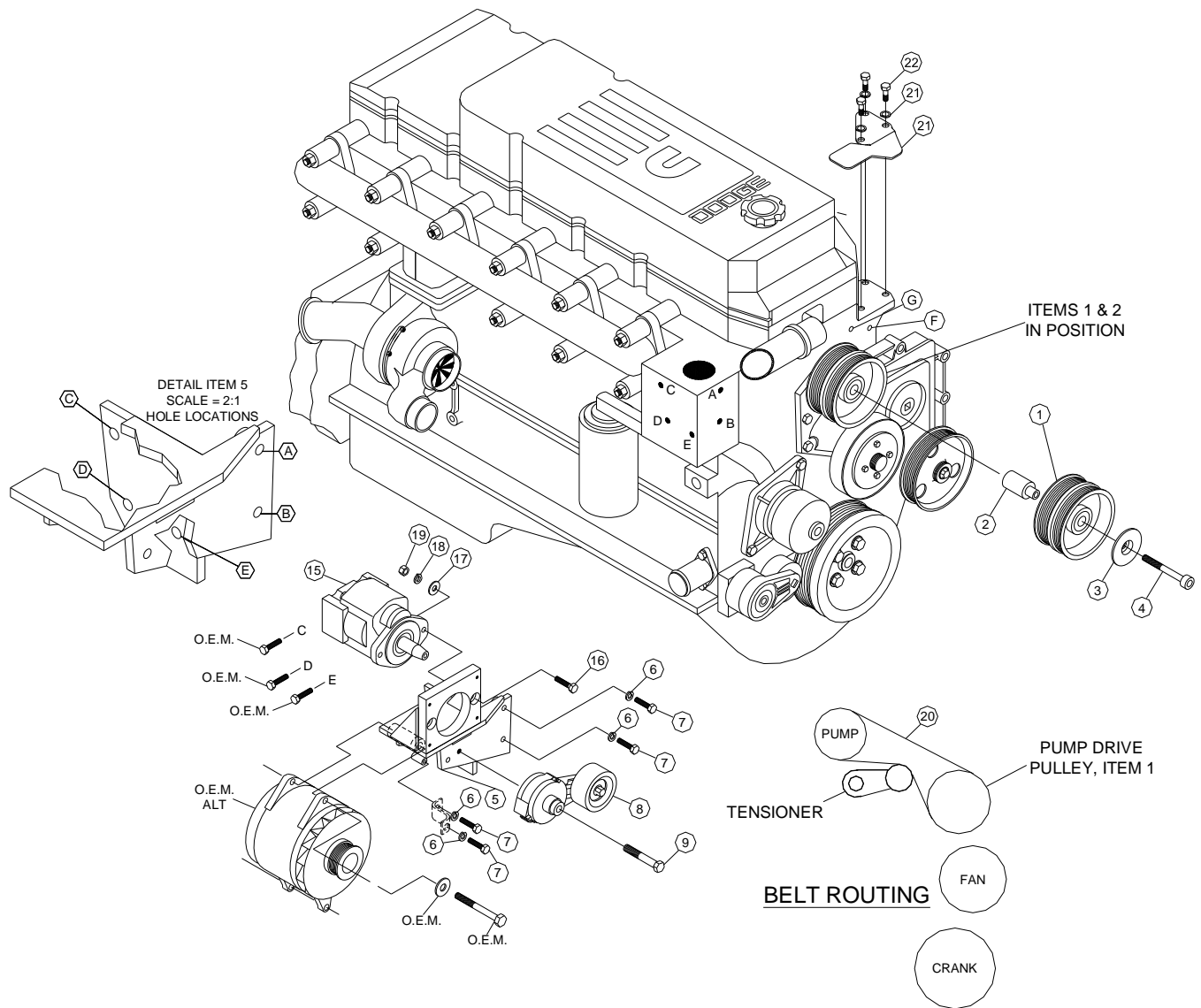
**NOTE:** Recommend no larger than 1.75 CID pump or 15hp draw.

## DMK 55A-6 Belt

2003-07 Dodge, R-250, 350

5.9 ISB Cummins Diesel

With A/C only



### PARTS LIST

#### DPC556DA INCLUDES ITEMS (1-4)

- |                          |  |
|--------------------------|--|
| 1. DPC 556D (1)          | 13. 8mm FW (1)                             |
| 2. DMB 550D (1)          | 14. DMB552 Aluminum plug (1)               |
| 3. DMB 554 (1)           | 15. Clutch Pump ( <i>Sold Separately</i> ) |
| 4. 10mm x 100mm SHCS (1) | 16. 3/8 FW (2)                             |
| 5. DMP55A (1)            | 17. 3/8 LW (2)                             |
| 6. 8mm LW (2)            | 18. 3/8 NC NUT (2)                         |
| 7. 8mm x 35mm (2)        | 19. 3/8-16 x 1-1/2 Bolt (2)                |
| 8. 8920236 (1)           | 20. Pump drive belt (1) Dayco 5060410      |
| 9. 12mm x 80mm (1)       | 21. DMB553 Hose rest (1)                   |
| 10. DMB 551 Brace (1)    | 22. 10mm x 20mm bolt (3)                   |
| 11. 8mm x 20mm (1)       | 23. 10mm LW                                |