



CW MILL EQUIPMENT CO., INC.  
P.O. Box 246 • Sabetha, Kansas 66534  
(785) 284-3454 • FAX (785) 284-3601

**DMK 58A-I8AT**  
2011-2013 Dodge D-2500-5500  
2013 Without remote mounted P.S. reservoir  
6.7 Cummins Diesel  
W-AC

## INSTALLATION NOTES

---

1. Drain radiator below upper radiator hose. Remove hose. Remove fan and fan shroud. Remove belt. Remove return hose from power steering reservoir and let reservoir drain. Remove bolts from power steering pump through the holes in the pulley. Leaving pressure lines attached, set pump aside on passenger side of engine. Remove power steering pump brackets.
2. *(If installing on a truck with a manual transmission skip to step 3.)* Remove Automatic transmission cooler lines from radiator side by removing quick clips. Drain fluid out of lines. Mark cooler lines in approximate location that they should be cut looking at the illustration. Check location by routing replacement hoses and adjust cut location if necessary. Cut with a tubing cutter and discard radiator side of the O.E.M. line. Install new hoses(16) as shown in illustration. **Note:** *Make sure to get compression fittings tight. Pressures in these lines may reach up to 300psi.*
3. Install studs (2) in timing cover w/nuts (4). Install pump onto bracket using pump hardware included in the kit. Install 5/8 hose(11) onto return hose using hose barb (13) and hose clamps(12). Pressure hoses on steering gear box may need to be moved in order to provide clearance to the pump.
4. Install pump and bracket assembly onto studs (2) using nuts(4) tighten nuts securely. NOTE: It may be easier to install hoses and power wire before power steering pump is reinstalled. Install power steering pump onto bracket using bolts (3) and LW's (5). Install new belt (15) according to the belt diagram. Install idler (9) in lowest hole location possible while tensioner is retracted fully using bolt (10) and bushing (8).
5. Install hose rest (6) to head on driver side using flange head bolts (7). Cut 3/4" off radiator side of top radiator hose and reinstall. Connect new power steering return hose (12) to power steering reservoir using hose barb (14) and hose clamps (13). Fill power steering reservoir w/ATF Plus 4 transmission fluid. Reinstall fan and fan shroud. Fill radiator and overflow tank. Check for proper belt tracking and clearances.

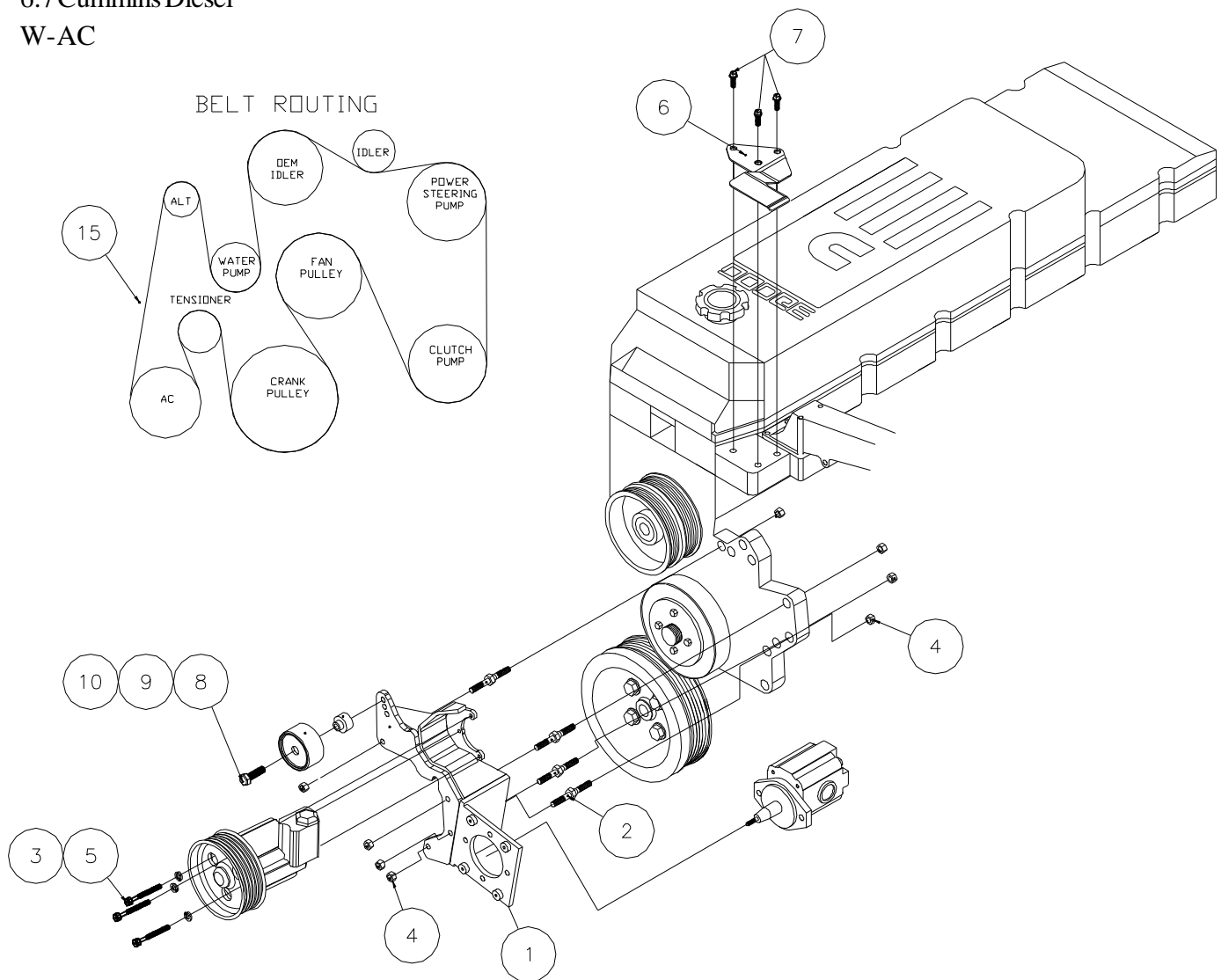
# DMK 58A-I8AT Belts

2011-2013 Dodge Truck 2500-5500

2013 Without remote mounted P.S. reservoir

6.7 Cummins Diesel

W-AC



- 1. DMP58A-I8 (1)
- 2. 8mm Stud 080751.25 ST (4)
- 3. 8mm x 80mm (3)
- 4. 8mm Flange Nut (8)
- 5. 8mm LW (3)
- 6. DMB563 (1)
- 7. 10mm x 20mm Flange (3)
- 8. DMB562 (1)
- 9. 89016 Dayco (1)

- 10. 10mm x 40mm Flange Bolt (1)

### **ITEMS 11-14 NOT SHOWN**

- 11. 14" of 5/8" Oil Hose (1)
- 12. #10 Hose Clamp Dayco (2)
- 13. 5/8" Double Ended Hose Barb (1)
- 14. 15" Plastic Tie Strap (1)
- 15. 5081325 Dayco (1)
- 16. D58TCHK (1)

## Transmission cooler line modifications



**Install quick clip end of hoses to radiator side.**



**Cut transmission cooler lines and install hoses using the compression fittings making sure to get them tight enough without collapsing tube to prevent leaking.**