

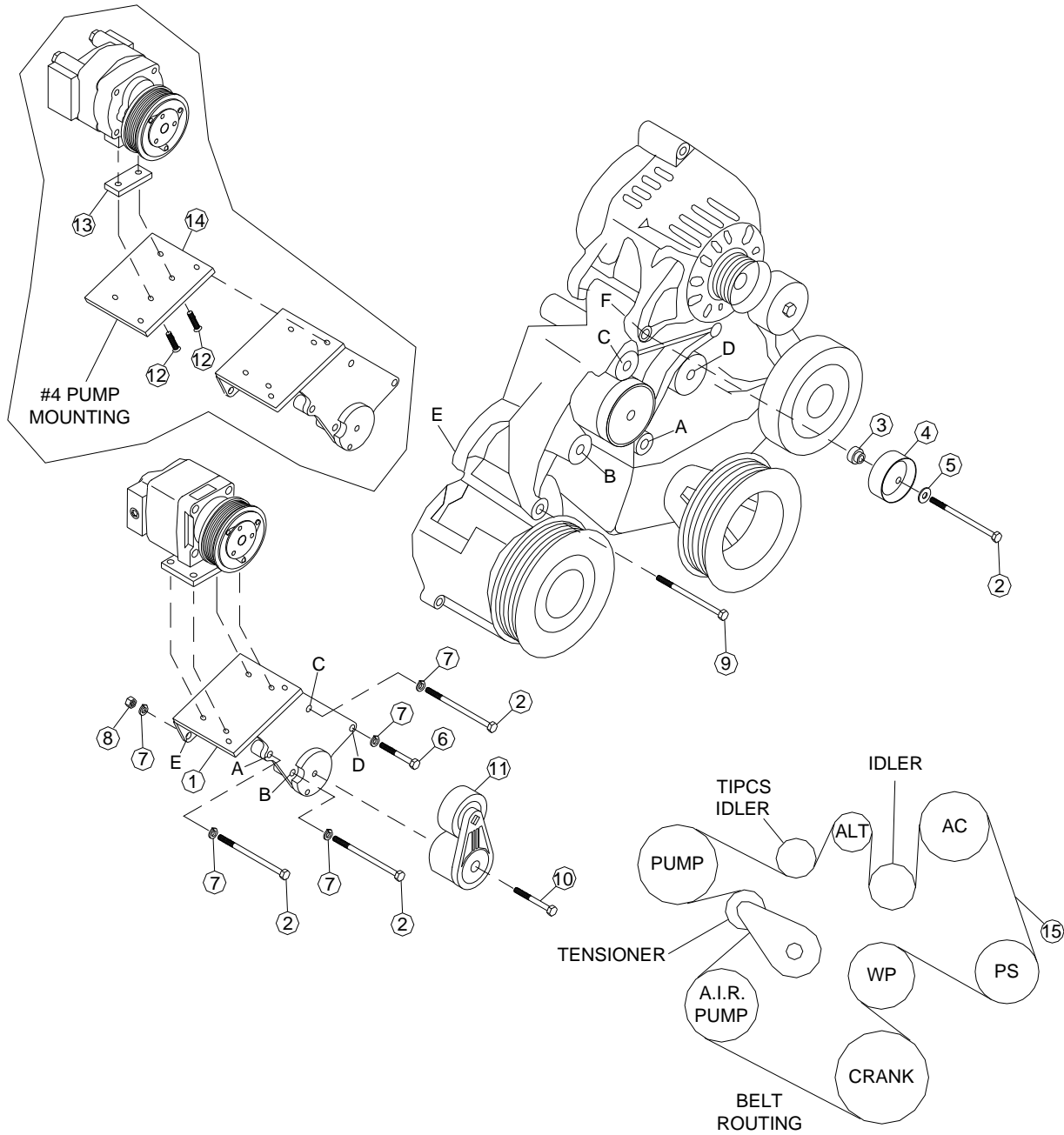


**CW MILL EQUIPMENT CO., INC.**  
**P.O. Box 246 • Sabetha, Kansas 66534**  
**(785) 284-3454 • FAX (785) 284-3601**

**DMK62-I8**  
1994-03 Dodge V-10  
W/ AC

- 
1. Disconnect the negative battery cable. Remove O.E.M. belt. Remove O.E.M. tensioner. Remove bolt from A.I.R. pump at location "E". Remove bolt from location "D".
  2. Install bracket (1) using bolts (2) and lockwashers (7) into bracket locations "A", "B", and "C". Use bolt (6) and lockwasher (7) in bracket location "D". Install bolt (9) into A.I.R. pump at location "E" and fasten with nut (8) and lockwasher (7) on backside of bracket. Tighten all bolts securely. Remove O.E.M. bolt from alternator at location "F". Attach idler (4) to alternator in location "F" using bolt (2), flatwasher (5), and spacer (3).
  3. Install tensioner (11) with bolt (10). Install clutch pump with bolts provided in kit. Align clutch with drive pulley. Tighten bolts securely. Install new belt (15) according to belt diagram.

**DMK62-I8**  
 1994-03 Dodge V-10  
 W/ AC



**PARTS LIST**

- |                            |   |
|----------------------------|---|
| 1. DMB62 (0-1) (1)         | 9. 3/8-16 x 5-1/2 SP  |
| 2. 3/8-16 X 5-1/2 Bolt (4) | 10. 3/8-16 x 2-1/4 Bolt (1)                                 |
| 3. DMB621 (1)              | 11. 89203 TIPCS (1)   |
| 4. TIPCS (1)               | 12. 1/2-13 x 1-3/4 FHCS (2) <i>(used on #4 mount only)</i>  |
| 5. 3/8 FW (1)              | 13. 1006644 Spacer Mount (1) <i>(used on #4 mount only)</i> |
| 6. 3/8-16 x 2-1/2 Bolt (1) | 14. DMP624 (1) <i>(used on #4 mount only)</i>               |
| 7. 3/8 LW (1)              | 15. 5071325 Dayco Belt (1)                                  |
| 8. 3/8-16 Nut (1)          |   |