



CW MILL EQUIPMENT CO., INC.
P.O. Box 246 • Sabetha, Kansas 66534
(785) 284-3454 • FAX (785) 284-3601

FMK 36 -2 Belts
1988-97 Ford F150,250-350
302,351 W-WO/AC
(Serpentine)

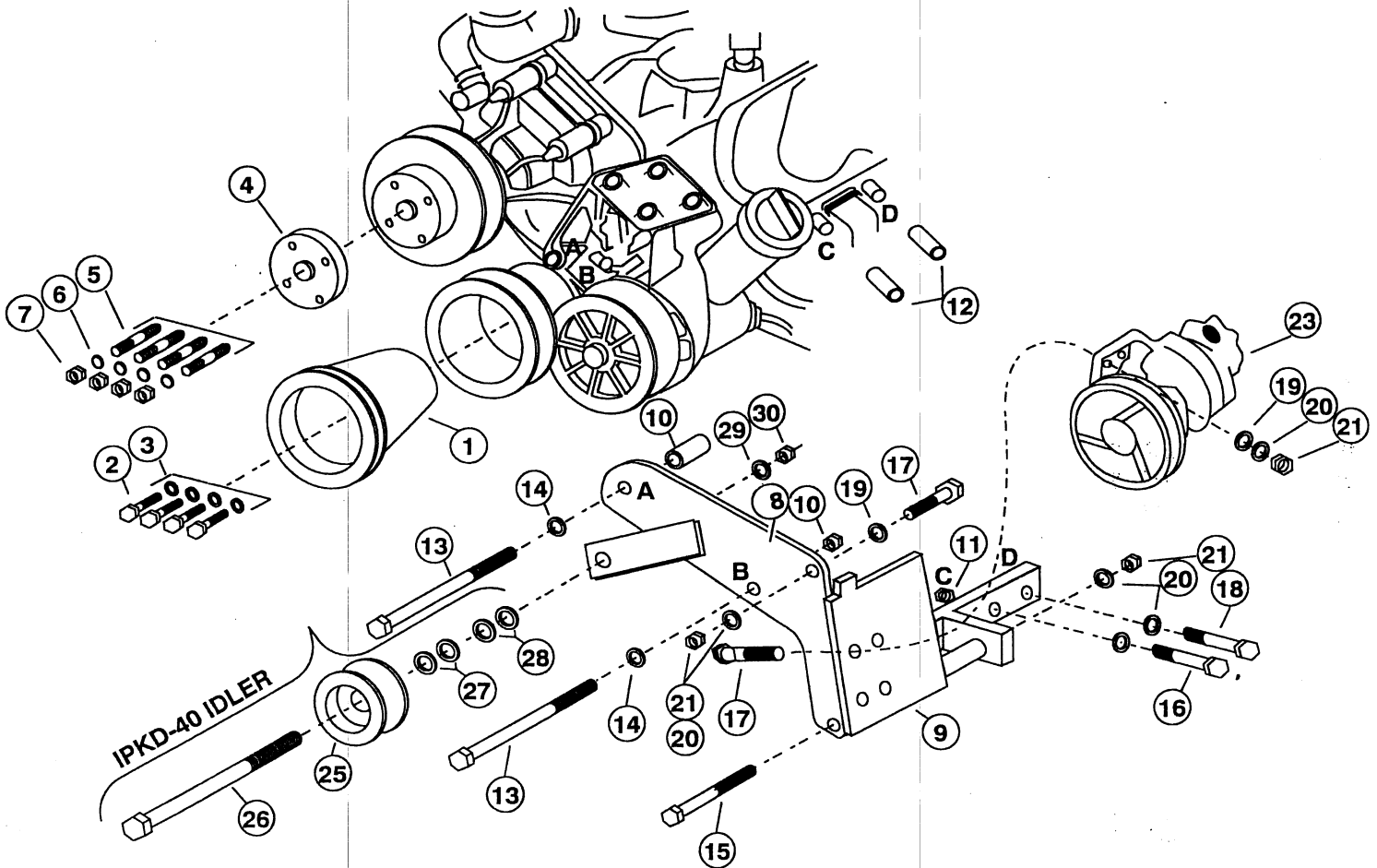
1. Disconnect battery terminal. Loosen serpentine belt. Remove ram air tube between air cleaner box and radiator support. Remove fan and shroud.
2. Remove bolts from pulley on crankshaft. Install drive pulley (1) with provided bolts and lockwashers. **CAUTION:** Be sure bolts have the same threads as O.E.M. bolts removed.
3. Remove nut from stud at location "C", install and tighten spacer nut (12). Remove nut from stud at location "D", install and tighten spacer nut (12).
4. Remove bolts at locations "A&B". Install bracket (8) with bolts and spacers as shown. Tighten bolts at all locations.
5. Install clutch pump to pump plate (9) with bolts provided, leave bolts loose. **NOTE:** Bolts must be installed as shown.
6. Install pump and plate to bracket (8) with bolts (15 & 17). Power steering hose will need to be swiveled in PS pump for clearance. Align clutch pulley to drive pulley (1), tighten pump bolts securely.
7. Put fan and shroud back in place, secure shroud. Install fan studs (5) and spacer (4) to water pump. Install and secure fan.
8. For belt clearance with water pump pulley it is necessary to install IPKD-40 idler at tab shown. Shim idler with proper amount of washers and secure idler.
9. Install and tension serpentine belt. Install pump drive belts (22), adjust pump plate (9) for proper belt tension; tighten bolts (15 & 17).
10. Use spacers (10) and screws (24) to raise air cleaner box. Ram air tube may need a small section (approx. 2" wide X 3" long) remove for clutch pulley clearance. Connect battery terminal.
11. **CAUTION:** Check all engine compartment vacuum hoses and wiring to insure they are not kinked, touching any high temperature item, or do not interfere with any linkage components.

NOTE: Due to O.E.M. assembly tolerances, visually make certain that there is adequate clearance between fan and drive pulley, and also fan and radiator. It may be necessary to use a longer spacer for pulley clearance. If there is little clearance to the radiator, - **PROVIDE ADEQUATE CLEARANCE BETWEEN FAN AND RADIATOR BEFORE OPERATING.**

FMK 36 -2 Belts

1988-97 Ford Truck 150,250,350

302,351 W-WO/AC



PARTSLIST

- | | |
|-----------------------------|---|
| 1. FPC 342 (1) | 17. 3/8 X 1-1/2 NC (5) |
| 2. 3/8 X 1-3/4 NC (4) | 18. 3/8 X 1 NC (1) |
| 3. 3/8 LW (4) | 19. 3/8 FW (5) |
| 4. FSO 509 (1) | 20. 3/8 LW (8) |
| 5. 5/16 X 2 1/2 ST (4) | 21. 3/8 NC (6) |
| 6. 5/16 LW (4) | 22. AX-60 (2)(#2 AX-59, #4 AX-58) (Not Shown) |
| 7. 5/16 NC (4) | 23. Clutch Pump Assembly (1) |
| 8. FMB 351 (1) | (Sold Separately) |
| 9. FMP 35(0-4) (1) | 24. #14 X 2 Screws (2) |
| 10. SP88- 0.750 (4) | 25. IPCD (1) |
| 11. SP88-0.375 or 0.500 (1) | 26. 5/8 X 4 NC (1) |
| 12. SP 3/8 X 1.750 NC (2) | 27. IPW 14 (5) |
| 13. 7/16 X 7-1/2 NC (2) | 28. 5/8 FW (12) |
| 14. 7/16 LW (2) | 29. 5/8 LW (1) |
| 15. 3/8 X 6-1/2 NC (1) | 30. 5/8 NC (1) |
| 16. 3/8 X 2 NC (1) | |

NOTE: Some trucks may require 1/2" spacer at location "C".
With 7" #2 AX-60, #4 AX-59.