

INSTALLATION NOTES

1. Disconnect the negative battery cable. Remove the OEM belt and idler at location "A". Remove the nut, radio noise suppressor and stud at location "B", and the bolt at location "C". Remove the bolts at locations "D" & "E". Install brace (2) with bolts (3) and flat washers (4) at that location. Radio noise suppressor can be installed at location "D". **DO NOT TIGHTEN.**
2. Reroute the wiring harness so bracket (1) can be installed without damaging the wires. Install bracket (1) at location "B" with the bolt (6) and LW's (7), and location "C" with bolt (5) & lock washer (7). Torque both bolts to 25 ft. /lbs. Install bolt (8) thru bracket (1), and into brace (2). Tighten bolts (8) and (3) evenly, then torque bolt (8) to 30 ft. /lbs., and bolts (3) to 10 ft. lbs. Install the OEM idler back to its original location.
3. Install the pump with spacer (14), bolts (15), LW's (16), and FW's (17). Align the pump then tighten bolts securely. Install the belt according to the belt diagram, then install idler (10) in the lowest hole possible. *Note: On 5.4L engines, it may be necessary to trim the plastic nipple from the air cleaner box.* Install the clutch and coil per manufacturer's instructions. Install the new belt and route it as shown in the illustration. Connect the negative battery cable. Run the engine and check for proper belt tracking and clearances.

Note: Check all engine compartment hoses and electrical wiring that may have been disturbed or rerouted during kit installation to be sure that hoses are not kinked, that they do not touch any high temperature items, and that they do not interfere with any linkage components.

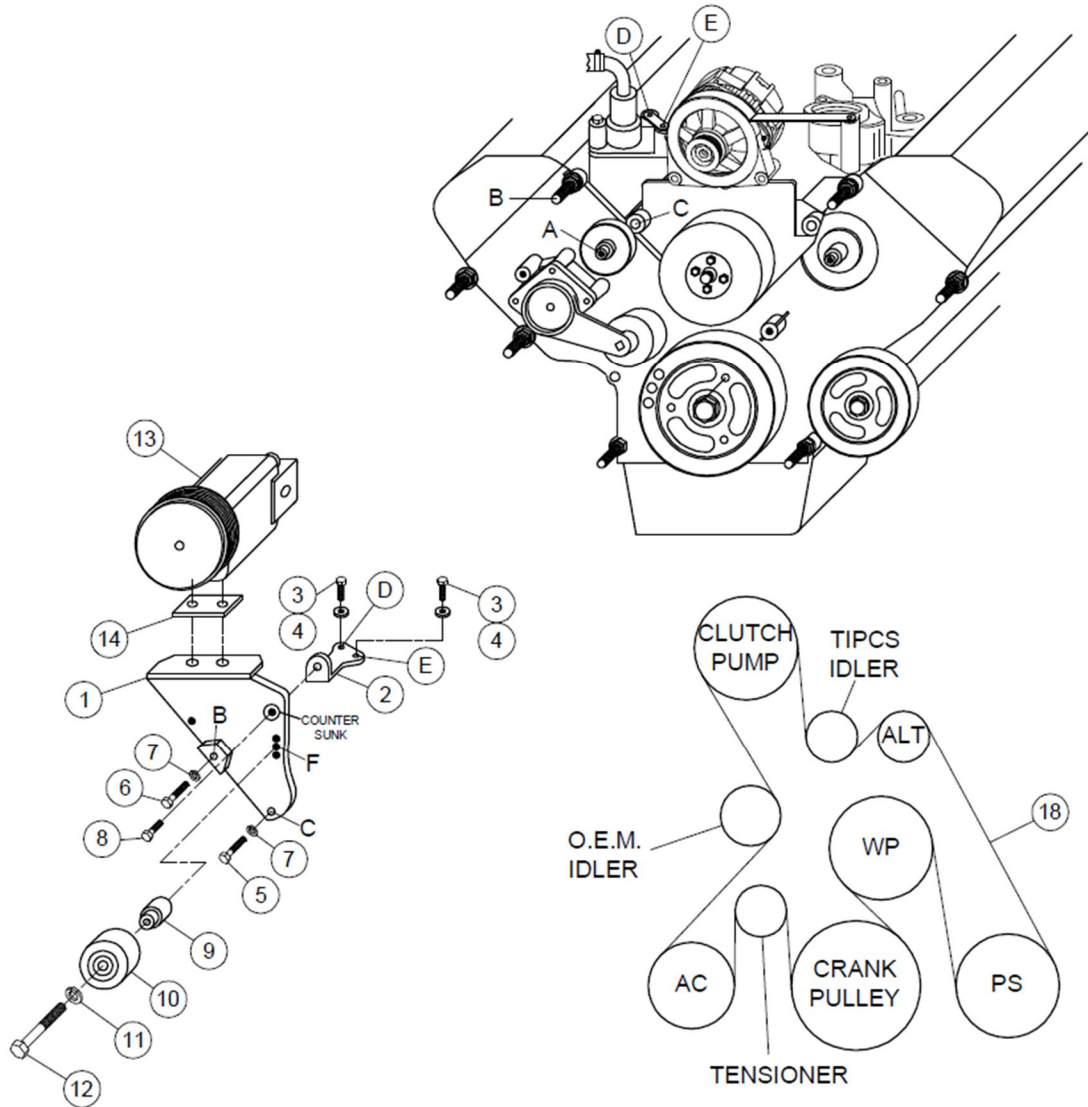
FMK474-I6

2005-2010 Ford F 250-550

5.4L Triton 3 Valve

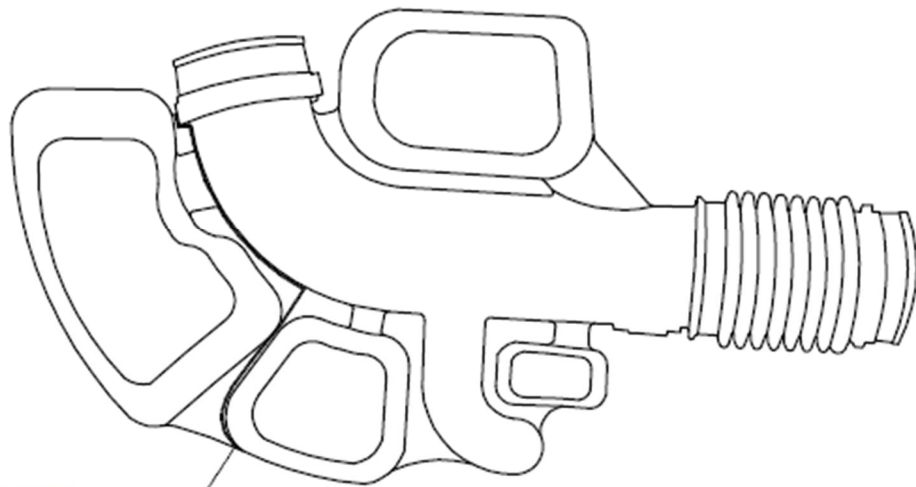
2005-2016 Ford F250-550

6.8L Triton 3-Valve

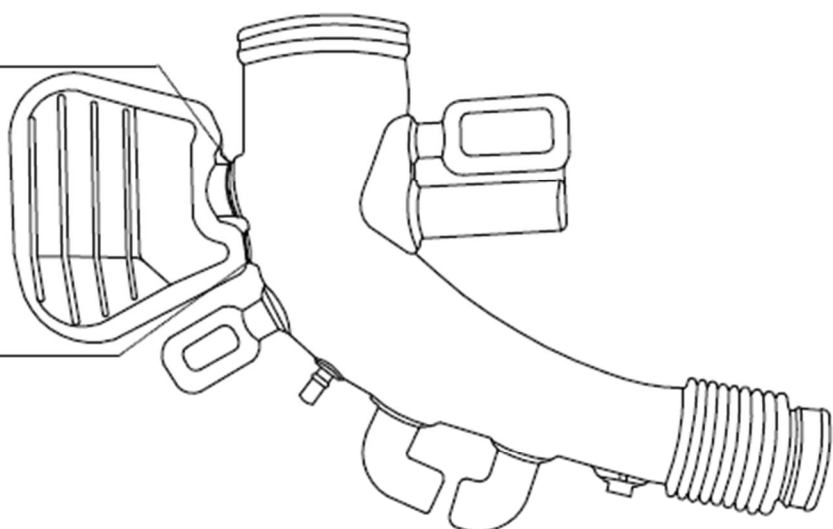


PARTS LIST

- | | |
|-------------------------------|---|
| 1. FMP 474-I6 (1) | 13. Clutch Pump (<i>Sold Separately</i>)(1) |
| 2. FMB 471-I6 (1) | 14. 1/4 Pump Spacer (1) |
| 3. 6mm x 25mm x 1.0 Bolt (2) | <i>ITEMS 15-17 NOT SHOWN</i> |
| 4. 6mm FW (2) | 15. 1/2 x 1-3/4 Bolt (2) |
| 5. 8mm x 60mm x 1.25 Bolt (1) | 16. 1/2 FW (2) |
| 6. 8mm x 70mm x 1.25(1) | 17. 1/2 LW (2) |
| 7. 8mm LW (2) | 18. 5061300 (1) |
| 8. 10mm x 20 Flange Bolt (1) | 19. Aluminum Plug 1012646 (5.4L) |
| 9. FMB 472-I6 (1) | 1012647 (6.8L) |
| 10. 89007 Dayco (1) | 20. Rubber Grommet 1013038 (5.4L) |
| 11. 12mm FW (1) | 1007870 (6.8L) |
| 12. 12mm x 45mm Bolt (1) | 21. SP64-0.188 (2) |

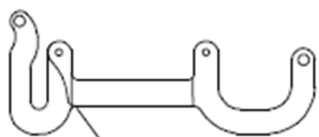


5.4L TRITON
CUT HERE



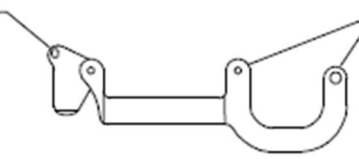
6.8L TRITON
CUT HERE

6.8L TRITON
CUT HERE



CUT ALONG LINE

FMB471-I6



INSERT .188" SHIMS
ITEM #21