



CW MILL EQUIPMENT CO., INC.  
P.O. Box 246 • Sabetha, Kansas 66534  
(785) 284-3454 • FAX (785) 284-3601

**FMK 52 -2 Belts**  
1985 1/2-91 Ford Truck F-600,700,800  
370,429/6.0,7.0, WO/AC

## INSTALLATION NOTES

---

1. Disconnect battery terminal and loosen belts.
2. Replace O.E.M. single groove pulley on crankshaft with three groove pulley (1) using original bolts.
3. Remove hinge bolt from A.I.R. pump at location "D". Install bracket (2) over cast A.I.R. pump bracket, using bolt (21) at location "D". Use washer (24) between brackets, if necessary, at location "E" with bolts (23). Leave bolts loose.
4. Remove O.E.M. bolts at locations "A,B,C". Using bolts and spacers (6,7,10) as shown, install bracket (3); leave bolts loose.
5. Install pump plate (5) with bolts (20 & 22), tighten bolts (11 & 14). Tighten bolts at all locations "A" through "E".
6. Loosen bolts (20 & 22), install clutch pump (34) to pump plate (5) with bolts provided. Align clutch pump pulley to drive pulley (1), tighten pump bolts securely.
7. Install idler pulley (27) with bolt and washers provided; shim as necessary for proper alignment with drive pulley (1).
8. Tension O.E.M. belts. Install ump drive belts (33), adjust pump plate (5) for proper belt tension, tighten bolts (20 & 22). Connect battery.

**CAUTION:** Check all engine compartment hoses and wiring to insure they are not kinked, touching any high temperature item, or do not interfere with any linkage components.

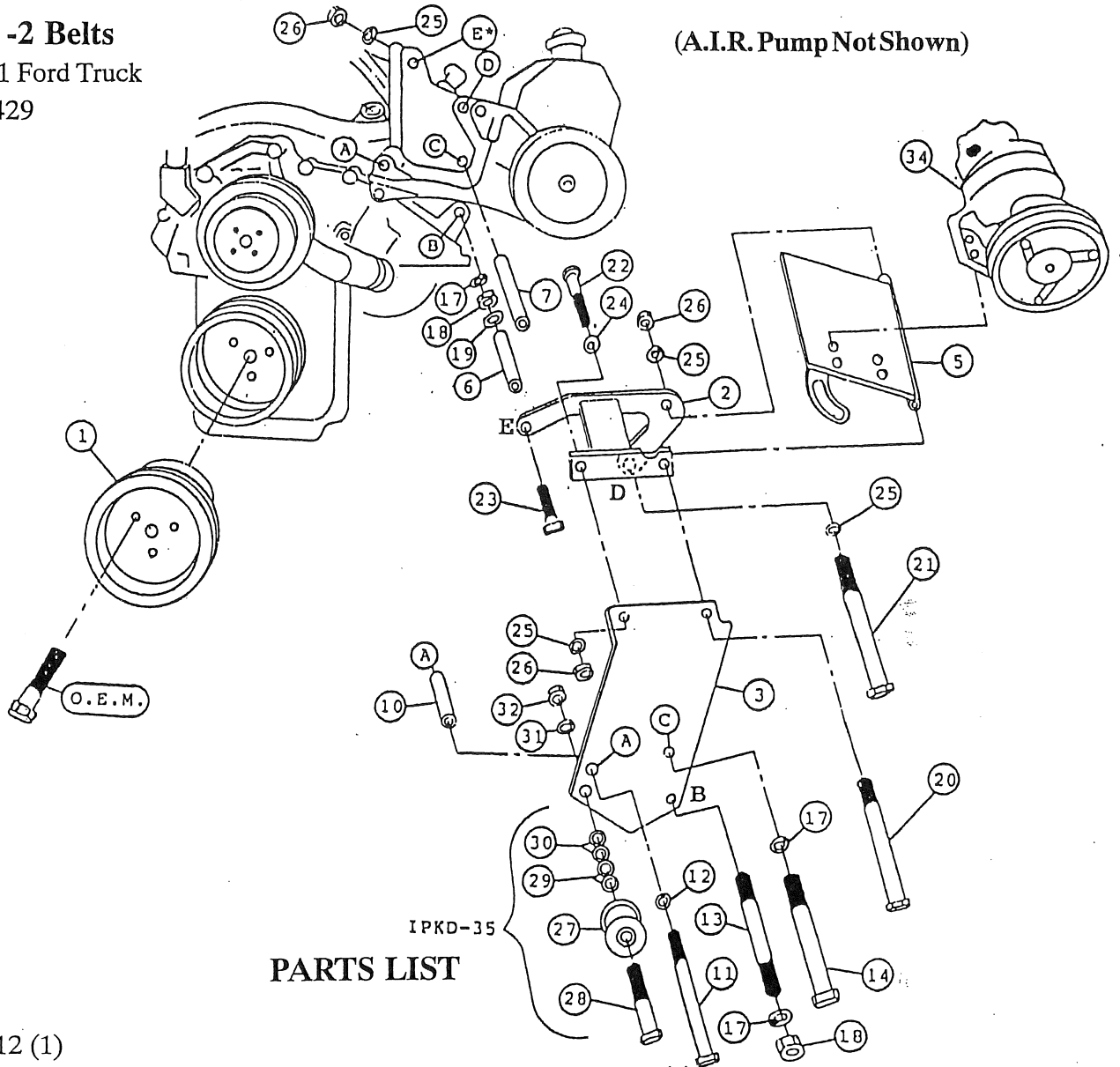
# FMK 52 -2 Belts

1985 1/2-91 Ford Truck

Ford 370, 429

WO/AC

(A.I.R. Pump Not Shown)



## PARTS LIST

- |                         |   |
|-------------------------|---|
| 1. FPC 512 (1)          | 19. 7/16 FW (2)                         |
| 2. FMB 510 (1)          | 20. 3/8 x 9 NC (1)                      |
| 3. FMB 511 (1)          | 21. 3/8 x 5 1/2 NC SP (1)               |
| 4. FMB 512 (1)          | 22. 3/8 x 1 3/4 NC (1)                  |
| 5. FMP 51(0-4) (1)      | 23. 3/8 x 1 1/4 NC (1)                  |
| 6. SP88-7.300 (1)       | 24. 3/8 FW (2)                          |
| 7. SP88-7.165 (1)       | 25. 3/8 LW (4)                          |
| 8. SP88-6.600 (1)       | 26. 3/8 NC (3)                          |
| 9. SP88-3.664 (1)       | 27. IPCD (1)                            |
| 10. SP88-2.875 (1)      | 28. 5/8 x 3 1/2 NC (1)                  |
| 11. 1/2 x 9 1/2 NC (1)  | 29. IPW 14 FW (5)                       |
| 12. 1/2 LW (1)          | 30. 5/8 FW (8)                          |
| 13. 7/16 x 10 NC ST (2) | 31. 5/8 LW (1)                          |
| 14. 7/16 x 9 NC (1)     | 32. 5/8 NC (1)                          |
| 15. 7/16 x 1 1/2 NC (1) | 33. AX-71(Not Shown)(#2 AX-70,#4 AX-68) |
| 16. 7/16 x 1 1/4 NC (1) | 34. Clutch Pump Assembly (1)            |
| 17. 7/16 LW (7)         | (Sold Separately)                       |
| 18. 7/16 NC (4)         |   |

NOTE: With 7" clutch #2 AX-72, #4 AX-70.



CW MILL EQUIPMENT CO., INC.  
P.O. Box 246 • Sabetha, Kansas 66534  
(785) 284-3454 • FAX (785) 284-3601

## FMK 52 -2 Belts

1991 1/2-98 Ford Truck F-600,700,800

370,429/6.0,7.0, WO/AC

(With stamped steel rather than cast iron PS bracket)

### INSTALLATION NOTES

1. Disconnect battery. Remove rubber hoses and loosen three small metric bolts on A.I.R. pump. Remove A.I.R. rubber hose from canister on radiator support-*note installation hose gets reversed for re-installation*. Loosen power steering belt and alternator belt.
2. Replace O.E.M. single groove pulley on crankshaft with three groove pulley (1) using original bolts.
3. Remove A.I.R. pump pulley and pump from bracket. Through tapped hole at location "D", mark stamped steel bracket so a hole can be drilled through steel bracket later. Remove bolts holding PS pump bracket to engine, lay pump aside.
4. Remove stamped steel bracket and drill 1/2 in. hole at location marked. Re-install bracket to engine with O.E.M. bolts at locations "B" & "C", install sub bracket (4) at location "F" & "G" and secure. Replace O.E.M. bolt at "B" with stud (13), may need to double nut to install, remove O.E.M. bolt at "C". Install P.S. pump using stud (13) at location "A" with lockwasher (17) and nuts (18) on both studs.

**NOTE: On '97-'98 and some '96 models it is necessary to use brackets (2a) & (4a) which are marked.**

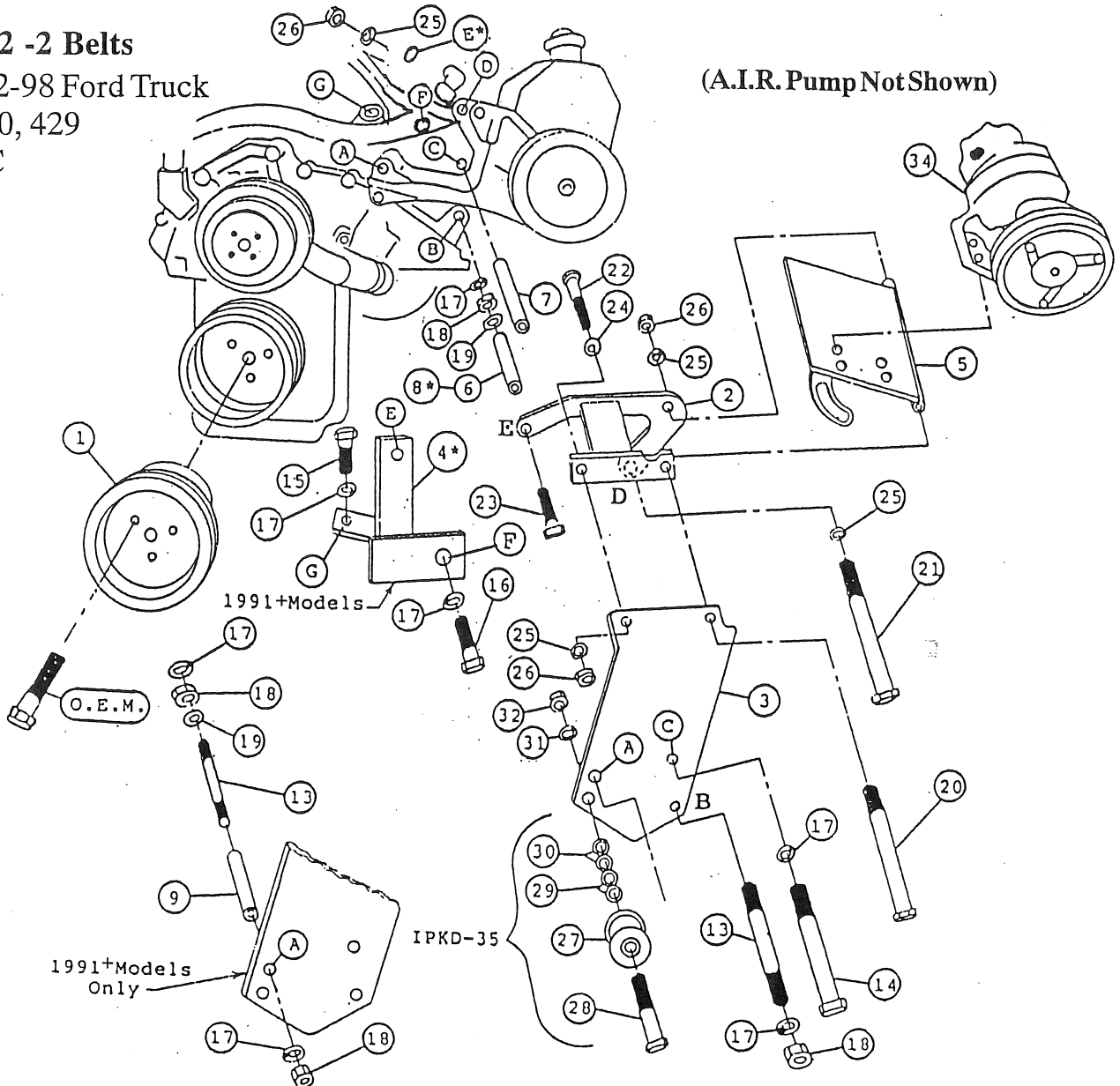
5. Install A.I.R. pump using bolt (21). Install bracket (2) between cast PS bracket and stamped steel bracket, thread bolt (21) through hole drilled in step 4. Fasten brackets (2 & 4) together, leave loose. Install pulley on A.I.R. pump. Install P.S. and A.I.R. belt-leave loose.
6. Install flatwasher (19) and spacer (9) on stud at location "A". Install flatwasher (19) and spacer (8) on stud at location "B". Install bolt (14) and lockwasher through hole "C" on bracket (3). Put spacer (7) on bolt (14) and install bracket (3) with lockwashers (17) and nuts (18). Secure bracket (2) at location "E".
7. Tighten P.S. & A.I.R. belt, secure A.I.R. pump and bracket (2) at location "D". Install rubber hoses to A.I.R. pump - *be sure to reverse hose to canister*.  
**NOTE: Check clearance to hoses and bracket to P.S. pump.**
8. Install pump plate (5) to bracket (2), install clutch pump to pump plate with bolts provided. Align clutch pump pulley (1), tighten pump bolts securely.
9. Install idler pulley (27) with bolt and washers provided. Shim as necessary for proper alignment with drive pulley (1). Install pump drive belts (33), adjust pump plate (5) for proper belt tension, tighten bolts (20 & 22). Connect battery.

**CAUTION:** Check all engine compartment hoses and wiring to insure they are not kinked, touching any high temperature item, or do not interfere with any linkage components.

# FMK 52 -2 Belts

1991 1/2-98 Ford Truck  
 Ford 370, 429  
 WO/AC

(A.I.R. Pump Not Shown)



## PARTS LIST

- |                         |   |
|-------------------------|---|
| 1. FPC 512 (1)          | 18. 7/16 NC (4)                           |
| 2. FMB 510 (1)          | 19. 7/16 FW (2)                           |
| 2a. FMB 520 (1)         | 20. 3/8 x 9 NC (1)                        |
| 3. FMB 511 (1)          | 21. 3/8 x 5 1/2 NC SP (1)                 |
| 4. FMB 512 (1)          | 22. 3/8 x 1 3/4 NC (1)                    |
| 4a. FMB 522 (1)         | 23. 3/8 x 1 1/4 NC (1)                    |
| 5. FMP 51(0-4) (1)      | 24. 3/8 FW (2)                            |
| 6. SP88-7.300 (1)       | 25. 3/8 LW (4)                            |
| 7. SP88-7.165 (1)       | 26. 3/8 NC (3)                            |
| 8. SP88-6.600 (1)       | 27. IPCD (1)                              |
| 9. SP88-3.664 (1)       | 28. 5/8 x 3 1/2 NC (1)                    |
| 10. SP88-2.875 (1)      | 29. IPW 14 FW (5)                         |
| 11. 1/2 x 9 1/2 NC (1)  | 30. 5/8 FW (8)                            |
| 12. 1/2 LW (1)          | 31. 5/8 LW (1)                            |
| 13. 7/16 x 10 NC ST (2) | 32. 5/8 NC (1)                            |
| 14. 7/16 x 9 NC (1)     | 33. AX-71 (Not Shown)(#2 AX-70, #4 AX-68) |
| 15. 7/16 x 1 1/2 NC (1) | 34. Clutch Pump Assembly (1)              |
| 16. 7/16 x 1 1/4 NC (1) | (Sold Separately)                         |
| 17. 7/16 LW (7)         |   |
- NOTE:** With 7" clutch #2 AX-72, #4 AX-70.