



CW MILL EQUIPMENT CO., INC.  
P.O. Box 246 • Sabetha, Kansas 66534  
(785) 284-3454 • FAX (785) 284-3601

## FMK 65 -2Belts

1994 1/2-97 Ford Truck 250,350,450  
7.3 Direct Injected Diesel W-WO/AC  
(Serpentine)

### INSTALLATION NOTES

1. Disconnect positive battery terminals. Remove serpentine belt, fan and shroud. Use wrenches (22 & 23) to hold water pump pulley when removing fan (*right hand thread*). Install drive pulley (1) with provided bolts.
2. Remove alternator, idlers and bolts at locations "A-D" from alternator bracket. Install bracket (5) at locations "A & E" with bolts provided. Install alternator with O.E.M. bolts and spacer (17) at location "I". Secure bolts at all locations.
3. Install pump (25) to mounting plate (7) with pump bolts provided. Align clutch pulley with drive pulley (1), secure pump bolts. Install and align idler (19) using shim washers (20), secure. Re-install all three O.E.M. idlers to alternator bracket.
4. Install serpentine belt, make sure belt is properly positioned in all pulleys. Install pump drive belt (26). Using jackbolt (16), adjust pump plate (7) for proper belt tension. Tighten bolts (12) and jamnut (15).
5. Install fan spacer nut (4). Install fan and shroud. Tighten fan and spacer nut to 163 ft/lbs. (*factory recommended spec.*) (*right hand thread*). **NOTE:** A mild grade of Loctite type sealant on threads may be advisable. Install tabs (6) and turnbuckles (24) to hold radiator in place or slightly ahead. **IMPORTANT:** Remove radiator X-brace straps on engine side of radiator.
6. Check and tighten all bolts. Connect battery terminal. Re-tighten belts after break in period. Make sure jackbolt does not contact hood.

**CAUTION:** Check all engine compartment vacuum hoses and electrical wiring that may have been disturbed or re-routed during kit installation to be sure that hoses are not kinked, that they do not touch any high temperature item, and that they do not interfere with any linkage components.

**NOTE:** This kit is designed to operate successfully with the standard fan supplied by the manufacturer of your truck. Due to O.E.M. assembly tolerances, visually make certain that there is adequate clearance between fan and drive pulley, and also between fan and radiator. If there is little clearance to the radiator, check to insure that it will not flex into the radiator before operating. It is not uncommon for radiator to flex toward fan while driving highway speed or through rough terrain. Provide adequate clearance (*1" minimum between fan and top tank*) before operating, move radiator forward if necessary. Turnbuckles provided usually keep standard radiator from being blown into fan but cannot keep truck from flexing. Super cooling radiator has less fan to radiator clearance.

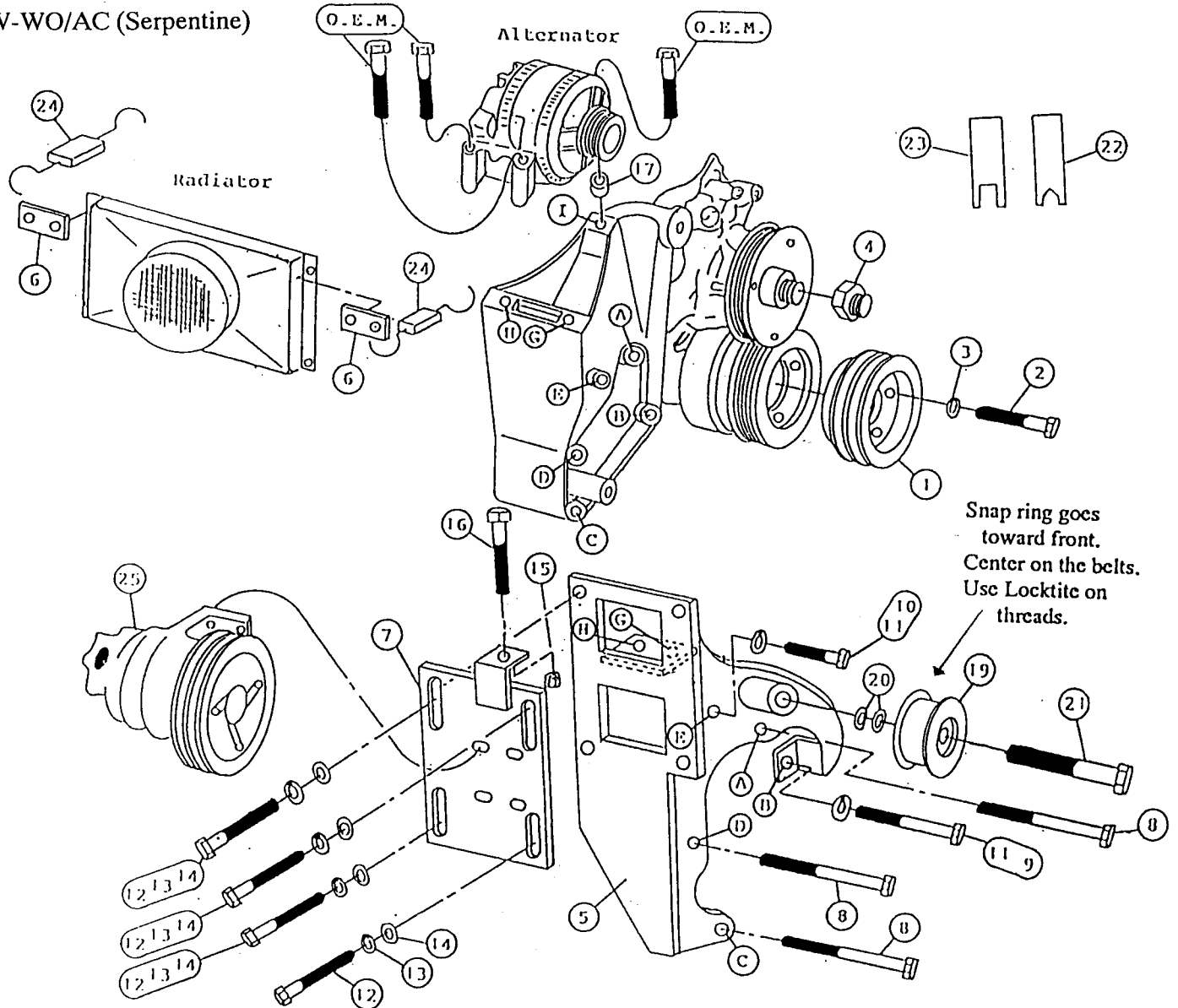
**NOTE:** Tighten belt to eliminate excessive belt whip.

**NOTICE:** FOR 1995 - 1997 MODELS ONLY: SEE PROCEDURE FOR RELOCATING RADIATOR RESERVOIR ON FOLLOWING ATTACHED PAGE.

# FMK 65 -2 Belts

1994 1/2-97 Ford 7.3 D.I.T. Diesel

W-WO/AC (Serpentine)



## PARTS LIST

- |                         |   |
|-------------------------|---|
| 1. FPC 65212 (1)        | 16. 3/8 X 2 1/2 NC Sq. HSS (1)                    |
| 2. 10mm X 40mm 1.5 (3)  | 17. SP88-0.250 (1)                                |
| 3. 10mm LW (3)          | 19. IPCD (1)                                      |
| 4. FSK 6525 (1)         | 20. IPW 14 (8)                                    |
| 5. FMB 650 (1)          | 21. 5/8 X 3 NC (1)                                |
| 6. FMB 651 (2)          | 22. 1 3/4" Wrench (1)                             |
| 7. FMP 65(0-4) (1)      | 23. 1 1/8" Wrench (1)                             |
| 8. 10mm X 110mm 1.5 (3) | 24. Turnbuckles (2)                               |
| 9. 10mm X 90mm 1.5 (1)  | 25. Clutch Pump Assembly (1)<br>(Sold Separately) |
| 10. 10mm X 30mm 1.5 (2) | 26. AX-64 (2) (Not Shown)<br>(#2 AX-63, #4 AX-63) |
| 11. 10mm LW (3)         | 27. FMB 652 (1)                                   |
| 12. 3/8 X 1 1/4 NC (4)  | 28. 1/4 X 3/4 (4)                                 |
| 13. 3/8 LW (4)          | 29. 1/4 LW (4)                                    |
| 14. 3/8 FW (4)          | 30. 1/4 NC (4)                                    |
| 15. 3/8 NC (1)          |   |

NOTE: With 7" #2 AX-65, #4 AX-65.