



CW MILL EQUIPMENT CO., INC.  
P.O. Box 246 • Sabetha, Kansas 66534  
(785) 284-3454 • FAX (785) 284-3601

## FMK 78 -2 Belts

1999 Ford Truck  
5.9 I.S.B. (1060) Cummins  
W-WO/AC, W-WO/Hyd. brakes,  
W-WO/Air Brakes  
(Serpentine)

---

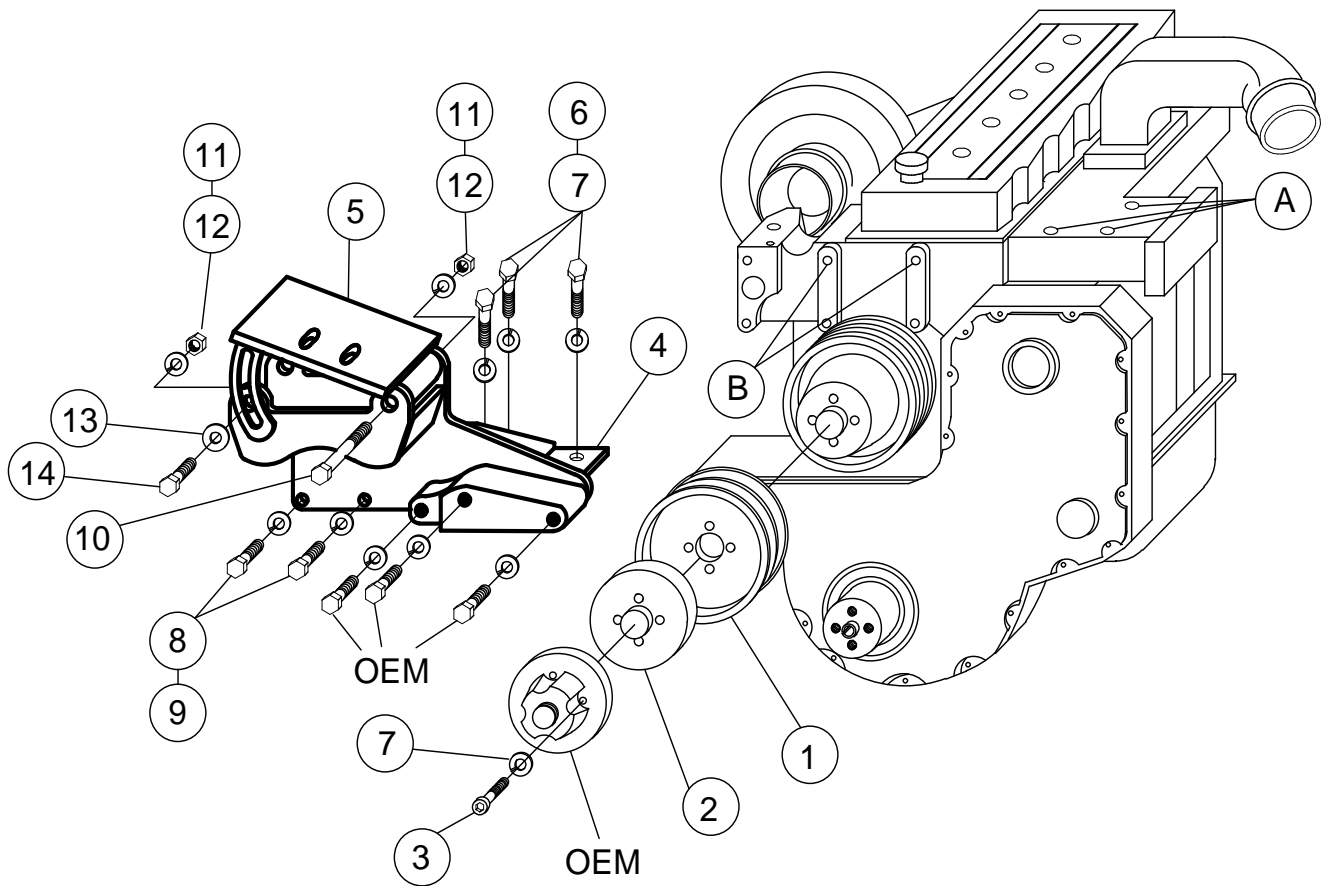
### INSTALLATION NOTES

---

1. Disconnect negative battery cable. If equipped with hydra-boost brakes, remove the hydra-boost pump and lay aside. Remove the bracket that held the pump in place (this bracket will not be reused).
2. Remove the serpentine belt. Remove the fan from the idler by removing the four bolts in the fan adapter. (If equipped with a single v-groove pulley in front of the serpentine pulley, do not remove it). Install the drive pulley (1) onto the front of the existing pulley(s) with O.E.M. bolts.  
**NOTE:** A fan spacer (2) and bolts (3) are supplied with this kit if more clearance is needed between the fan and clutch pump.
3. Install bracket (4) with bolts and lockwashers (6 & 7) at locations A, and bolts and lockwashers (8 & 9) at location B. Tighten bolts securely. If equipped, replace the hydra-boost pump back to its original location on the new bracket with O.E.M. bolts). Install O.E.M. serpentine belt and hydra-boost pump belt (if equipped).
4. Install clutch pump onto pump plate (5) and align it with the drive pulley. Install pump belts and tighten properly. Connect negative battery cable. Check fan, hoses, wiring, etc. for proper clearance.

## FMK 78 -2 Belts

1999 Ford (1060) 5.9ISB Cummins  
W-WO/AC, W-WO/Hyd. brakes,  
W-WO/Air brakes



### PARTS LIST

- |                            |                           |
|----------------------------|---------------------------|
| 1. FPC 762 (1)             | 8. 8mm x 25mm 10.9 (2)    |
| 2. FPA 762 (1)             | 9. 8mm LW (2)             |
| 3. 10mm x 50mm 1.5SHCS (4) | 10. 3/8 X 3 3/4 NC (1)    |
| 4. FMB 780 (1)             | 11. 3/8 NC Nut (3)        |
| 5. FMP 78(0-4) (1)         | 12. 3/8 LW (3)            |
| 6. 10mm x 30mm 10.9 (3)    | 13. 3/8 FW (1)            |
| 7. 10mm LW (7)             | 14. 3/8 x 1 1/4 NC (2)    |
|                            | 15. Belts (Not Shown) (2) |
|                            | Dayco AX-38               |
|                            | #2 AX-37, #4 AX-36        |

**NOTE:** With 7" #2 AX-38, #4 AX-37.