



CW MILL EQUIPMENT CO., INC.
P.O. Box 246 • Sabetha, Kansas 66534
(785) 284-3454 • FAX (785) 284-360

FMK 79 -2 Belts
2000-03 Ford Truck F-650, F-750
5.9 I.S.B. (1060) Cummins
W-WO/AC, W-WO/Hyd. brakes,
W-WO/Air Brakes
(Serpentine)

INSTALLATION NOTES

1. Disconnect negative battery cable. Drain the engine coolant until the level is below the thermostat housing. Loosen the hose clamp at the radiator and remove the coupler hose at the engine. Install the new coupler hose (17) onto the engine using the O.E.M. clamp. Pivot the metal tube upward until it will fit over the new hose. Install O.E.M. clamp and tighten the clamp at the radiator end. Refill coolant.
2. If equipped with A/C, remove the belt and the bolts at locations "A,B, & C". Lay the A/C bracket assembly aside. Do not loosen any of the A/C lines. Remove O.E.M. serpentine belt. Remove the four bolts holding the fan to the fan hub pulley(s). Install the drive pulley (1) onto the front of the existing pulley using bolts (3) and lockwashers (7).

NOTE: A fan spacer (2) and longer bolts (3) are supplied with the kit if more clearance is needed between the fan and clutch pump.

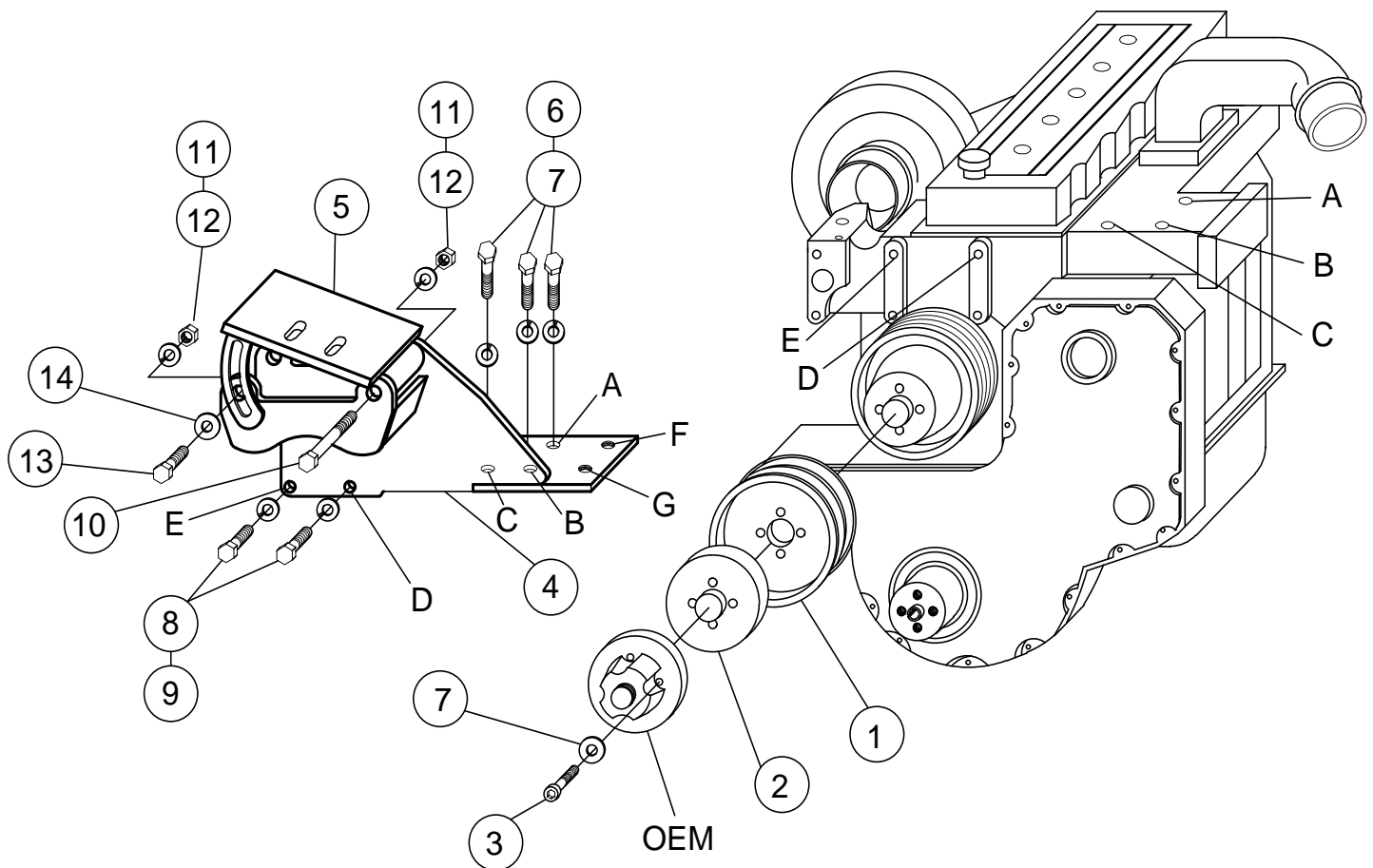
3. Install the main bracket assembly onto the engine with bolts and lockwashers (8 & 9) at locations "D & E", and bolts and lockwashers (6 & 7) at locations "A,B, & C". Tighten bolts.
4. Trucks equipped with A/C, the A/C bracket is bolted to the clutch pump bracket at locations "B,F, & G". Use the O.E.M. bolts at locations "F & G" and the 10mm x 45mm bolt (6a) and lockwasher at location "B". It may be necessary to flip the A/C jackscrew end for end to provide enough clearance to the pump bracket.
5. Install the O.E.M. serpentine belt and the new A/C v-belt if equipped. Install the pump onto the pump plate and align it with the drive pulley, tighten pump bolts. Install the pump belts and tension properly. Check all hoses and wires that may have been moved during installation for proper clearances to moving or hot parts. Connect the battery cable. Run the engine for 10 to 15 minutes then retension belts.

FMK 79-2 Belts

2000-03 Ford (1060) 5.9ISB Cummins

W-WO/AC, W-WO/Hyd. brakes,

W-WO/Air brakes



PARTS LIST

- | | |
|--------------------------------------|--|
| 1. FPC 762 (1) | 8. 8mm x 25mm 10.9 (2) |
| 2. FPA 762 (1) | 9. 8mm LW (2) |
| 3. 10mm x 50mm 1.5 SHCS (4) | 10. 3/8 x 3 3/4 NC (1) |
| 4. FMB 790 (1) | 11. 3/8 NC Nut (3) |
| 5. FMP 78(0-4) (1) | 12. 3/8 LW (3) |
| 6. 10mm x 30mm 10.9 (3) | 13. 3/8 x 1 1/4 NC (2) |
| 6a. 10mm x 45mm 10.9 (1) (Not shown) | 14. 3/8 FW (2) |
| 7. 10mm LW (7) | 15. A/C Belt (Not Shown) (1) Goodyear A41F |
| | 16. Belts (Not Shown) (2) Goodyear A38F #2 A37F, #4 A36F |
| | 17. 1 3/4" Hose x 11" (Not Shown) (1) |

NOTE: With 7" #2 A38F, #4 A37F.