



CW MILL EQUIPMENT CO., INC.
P.O. Box 246 • Sabetha, Kansas 66534
(785) 284-3454 • FAX (785) 284-3601

FMK 84-8
2004-07 Ford F650 & F750
Diesel VT 365
W-W/O AC
W/O Air Compressor

INSTALLATION NOTES

1. Install drive pulley (1) onto harmonic balancer using bolts (2) and lockwashers (3). Torque bolts to 40 ft.lbs..
2. Install bracket (4) on the front of the driver side head at locations "A", "B", and "C" with bolts (5) and lockwashers (3). Torque bolts to 40 ft.lbs..
3. Install clutch pump onto the bracket with bolts provided in the kit. Align the pump pulley with the drive pulley and tighten bolts securely. Install tensioner (6) with bolt (7). Install belt (8) as shown in diagram.
4. Run engine and check for proper belt tracking and clearances.

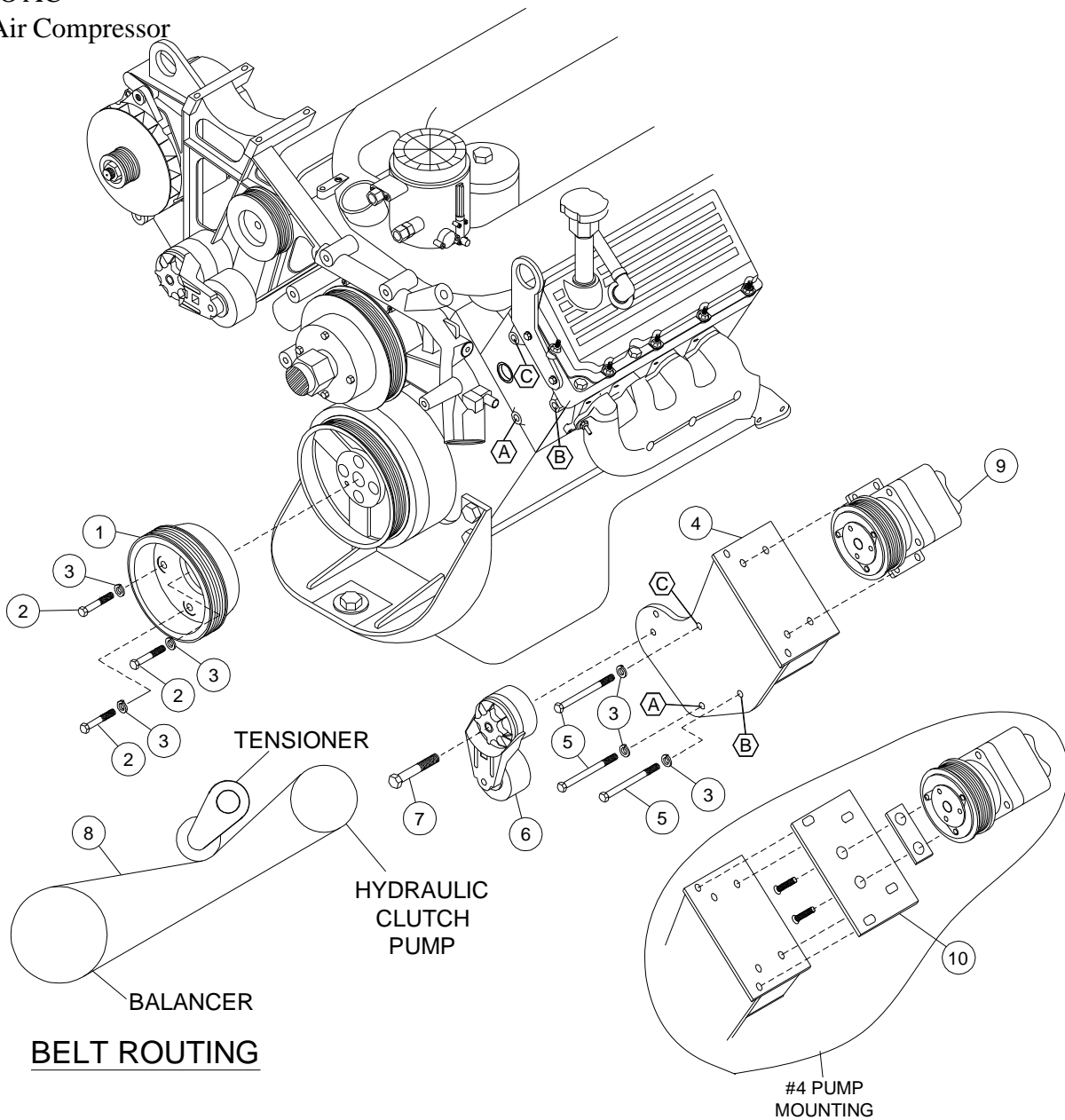
FMK 84-8

2004-07 Ford F650 & F750

Diesel VT 365

W-W/O AC

W/O Air Compressor



PARTSLIST

- | | |
|---------------------|--|
| 1. FPC 688 (1) | 6. Tensioner 89200B (1) |
| 2. 10mm x 30mm (3) | 7. 10mm x 75mm (1) |
| 3. 10mm LW (6) | 8. Belt; #2-5080630,
#4-5080625 (1) |
| 4. IMB 631 (1) | 9. Clutch pump (Sold Separately) |
| 5. 10mm x 150mm (3) | 10. IMP 634 |