



CWMILL EQUIPMENT CO., INC.
P.O. Box 246 • Sabetha, Kansas 66534
(785) 284-3454 • FAX (785) 284-3601

IMK 62 -2 Belts
1994-2002 International
4700,4900 Series
7.3L(444E) W-WO/AC
W/O AIR BRAKES

INSTALLATION NOTES

1. Disconnect positive battery terminals. Remove serpentine belt, fan and shroud. Use wrench (15) when removing fan (*right hand threads*). Install drive pulley (1) with bolts (2) and washers (3) provided.
2. Remove idler bracket from the left side of engine. Install bracket (5) in its place at locations "A,B,C & D" with bolts (7), (8) and washers (9). Remove idler pulley from the O.E.M. bracket and install it on bracket (5). Secure bolts at all locations.
NOTE: Some metal may need to be removed off of bracket on the valve cover on the left hand side of the engine.
3. Install pump (16) to mounting plate (6) with pump bolts provided. Align clutch pulley with drive pulley (1). Tighten pump bolts.
4. Install serpentine belt, make sure belt is properly positioned in all pulleys. Install pump drive belts (17), adjust pump plate (6) for proper belt tension; tighten (10) and (11).
5. Install fan spacer nut (4), fan and shroud. Tighten fan and spacer nut to 163 ft.\lbs. (factory recommended spec.) (*right hand threads*).
NOTE: A mild grade of Loctite type sealant on threads may be advisable.
6. Check and tighten all bolts. Connect battery terminal. Re-tighten belts after break in period.
CAUTION: Check all engine compartment vacuum hoses and electrical wiring that may have been disturbed or re-routed during kit installation to be sure that hoses are not kinked, that they do not touch any high temperature item, and that they do not interfere with any linkage components.

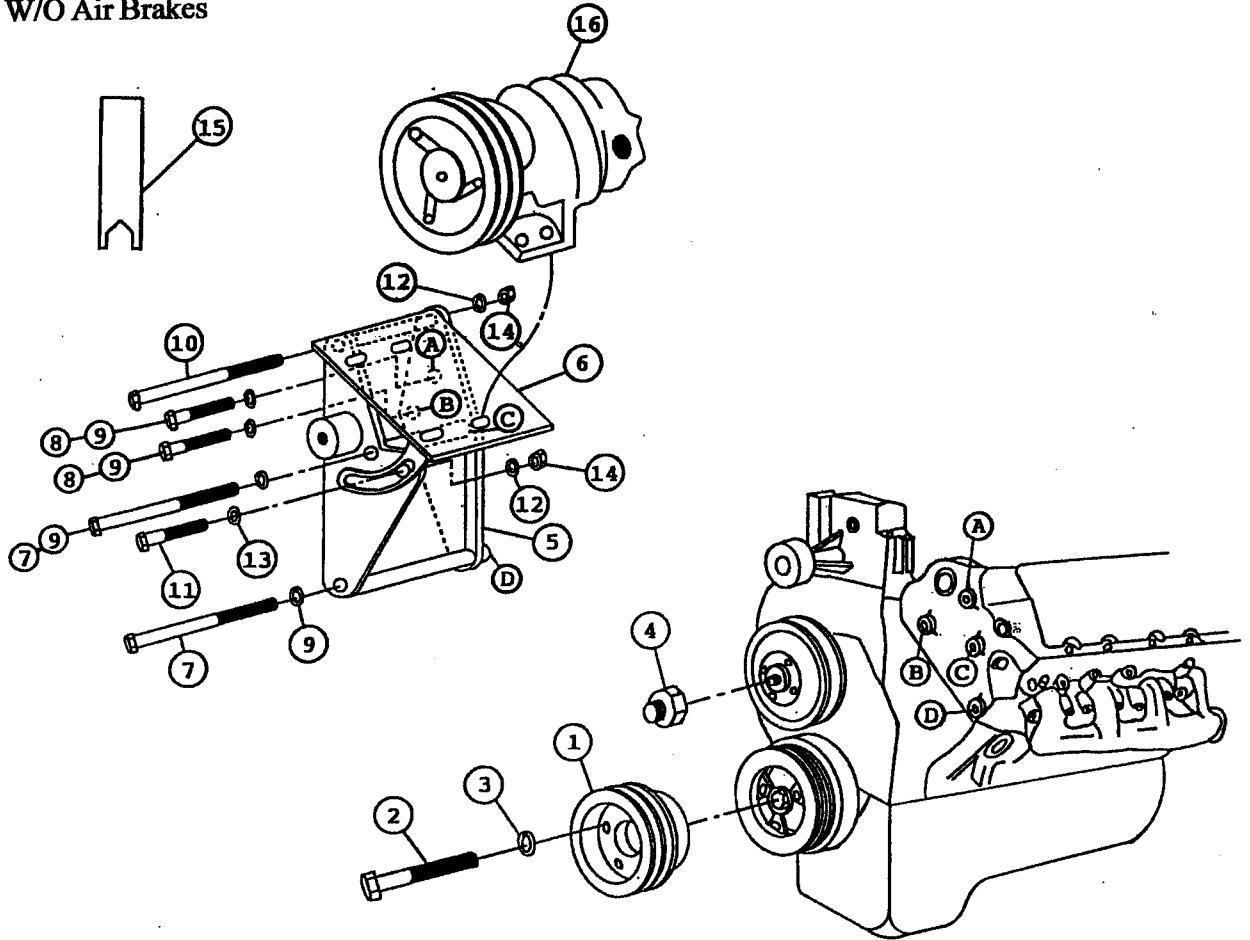
NOTE: This kit is designed to operate successfully with the standard fan supplied by the manufacturer of your truck. Due to O.E.M. assembly tolerances, visually make certain that there is adequate clearance between fan and drive pulley, and also between fan and radiator. If there is little clearance to the radiator, check to insure that it will not flex into the radiator before operating. It is not uncommon for radiator to flex toward fan while driving at highway speed or through rough terrain.

IMK 62 -2 Belts

1994-2002 International

4700,4900 Series 7.3L (T444E)

W-WO/AC, W/O Air Brakes



PARTS LIST

- | | |
|-------------------------|------------------------------|
| 1. IPC 622 (1) | 10. 3/8 x 4 1/2 (1) |
| 2. 10mm x 55mm 1.5 (3) | 11. 3/8 x 1 1/2 NC (1) |
| 3. 10mm LW (3) | 12. 3/8 LW (2) |
| 4. FSK 65 (1) | 13. 3/8 FW (1) |
| 5. IMB 620 (1) | 14. 3/8 NC (2) |
| 6. IMP 62(0-4) (1) | 15. Wrench (1) |
| 7. 10mm x 130mm 1.5 (2) | 16. Clutch Pump Assembly (1) |
| 8. 10mm x 40mm 1.5 (2) | (Sold Separately) |
| 9. 10mm LW (4) | 17. A61F (2) (Not Shown) |
| | (#2 A60F, #4 A59F) |

NOTE: With 7" #2 A61F, #4 A60F.