



CW MILL EQUIPMENT CO., INC.
P.O. Box 246 • Sabetha, Kansas 66534
(785) 284-3454 • FAX (785) 284-3601

CMK47SD508 -8 Belt

2001-02C&K 3500HD

2003-09 4500,5500

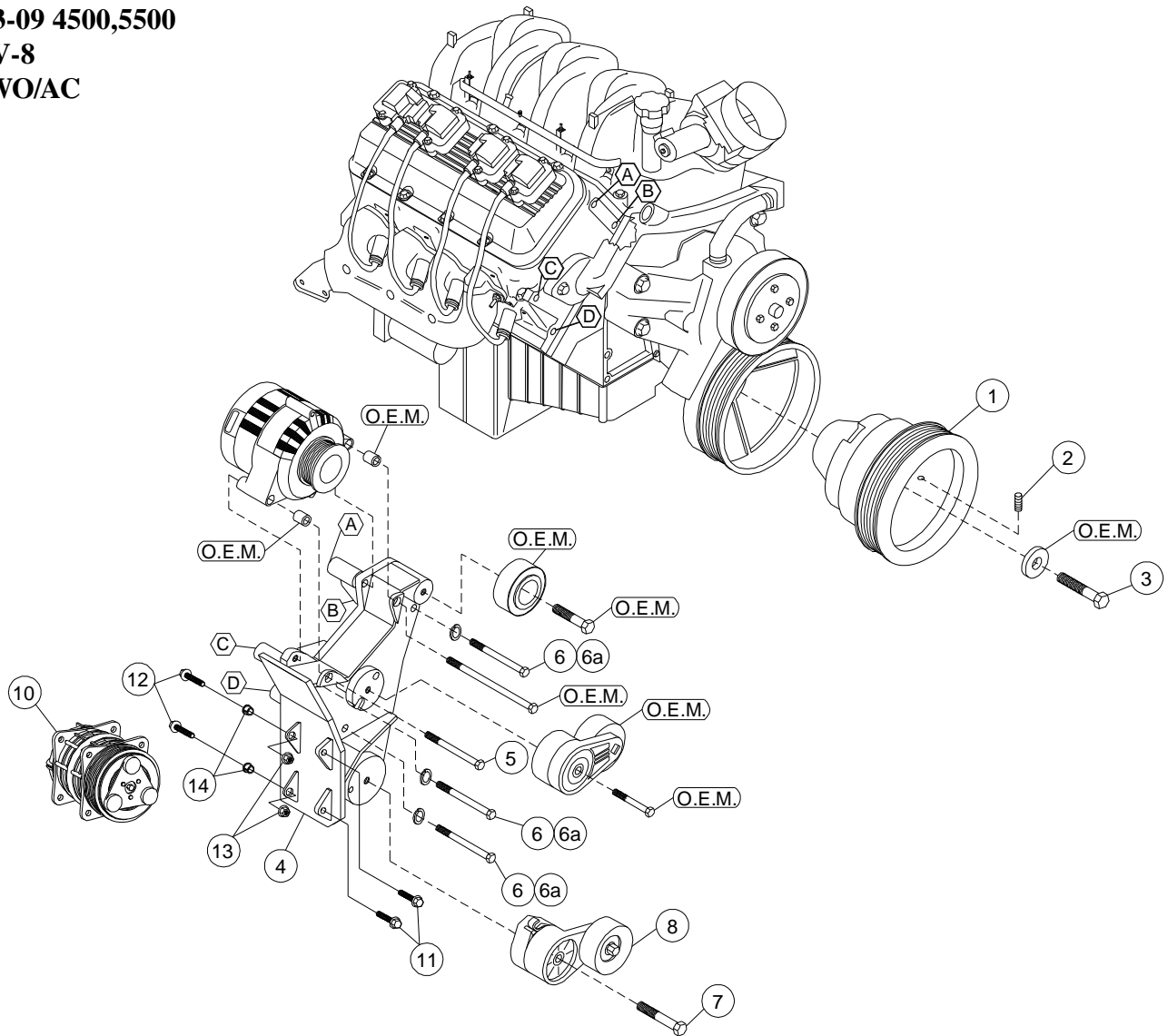
8.1, V-8

W-WO/AC

INSTALLATION NOTES

1. Disconnect the negative battery cable. Remove the plastic air intake tube. Remove the top half of the fan shroud and the fan. Remove the OEM belt, tensioner idler, and alternator from the engine. Remove the alternator bracket.
2. Remove the bolt and washer from the damper. Install the washer onto bolt (3). Install the six allen head set screws (2) into the drive pulley from the inside until they are flush with the outside of the pulley. Using a mild grade of loctite. Install the drive pulley into the damper using bolt (3). Tighten bolt (3) finger tight. Making sure the drive pulley pilot is engaged into the damper, turn the pulley counter clockwise until it hits against the damper spokes. Torque bolt (3) to 210 ft./lbs.. Tighten the allen head set screws in a crossing pattern at 10 in lbs., 10 ft./lbs., 15 ft./lbs. and then 20 ft./lbs.
3. Install the aux. A.C. compressor (10) onto the bracket (4) using bolts (11,12), nuts (13) and slide bushings (14). Install the bracket and compressor assembly onto the engine using bolts (6) with lockwasher (6a) at holes "B,C & D". Do not tighten. Remove the bushings from the OEM alternator bracket and install them onto bracket (4). Install the alternator using one of the OEM alternator bolts at location "A", and bolt (5) at the other location making sure the bracket is flat against the front of the head, tighten bolts securely.
4. Install the OEM tensioner, idler and belt back on the engine as originally routed. Install tensioner (8) with bolt (7) onto the bracket with the alignment pin in the bottom hole. Install the aux. A.C. drive belt. If the belt is too short, remove the tensioner and install with the alignment pin in the top hole. Cut the upper transmission coolant line 8-10 inches below the 90° bend with a tubing cutter. Install the compression fitting onto the line and tighten it securely. Install the 5/8 oil hose onto the fitting and secure it with the hose clamp provided. Splice this hose back into the line using the double ended hose barb & clamps provided.
5. Install the fan, fan shroud and air intake tube. Turn the fan to make sure it clears the drive pulley and tensioner assembly. Connect the battery. Check for proper clearance of any hoses, wires, etc. that may come in contact with moving parts. Run the engine to make sure the belts are tracking properly.

CMK47SD508 -8 Belt
2001-02 C&K 3500 H.D.
2003-09 4500,5500
8.1 V-8
W-WO/AC



PARTS LIST

- | | |
|------------------------------|--|
| 1. CPC 478A (1) | 11. 10mm x 30mm Flange (2) |
| 2. 3/8 x 1 NC Set Screw (6) | 12. 10mm x 40mm Flange (2) |
| 3. 16mm x 80mm 1.5 (1) | 13. 10mm Flange Nut (2) |
| 4. CMP 47 SD508 (1) | 14. 1255-0090 Slide Bushing (2) |
| 5. 10mm x 80mm 1.5 (1) | <u>Items 15-21 Not Shown</u> |
| 6. 10mm x 100mm 1.5 (3) | 15. 5/8 Hose Barb to JIC (1) 21-0-510 |
| 6a. 10mm LW (3) | 16. 5/8 Compression Sleeve (1) 419-10 |
| 7. 12mm x 80mm 1.75 (1) | 17. 5/8 compression Nut (1) 418-10 |
| 8. Dayco 89217TIPCS Assembly | 18. 5/8 Double Ended Hose Barb (1) 4300-10 |
| 9. Belt Dayco 5080485 (1) | 19. #14 Adel Clamp (3) |
| 10. A.C. Compressor (1) | 20. #10 Hose Clamp (3) |
| (Sold Separately) | 21. 4' 5/8 Oil Hose (1) |