



CW MILL EQUIPMENT CO., INC.
P.O. Box 246 • Sabetha, Kansas 66534
(785) 284-3454 • FAX (785) 284-3601

IMK 47SD508-I8

1994-2001 International
DT408 & 466
W-WO/AC

INSTALLATION NOTES

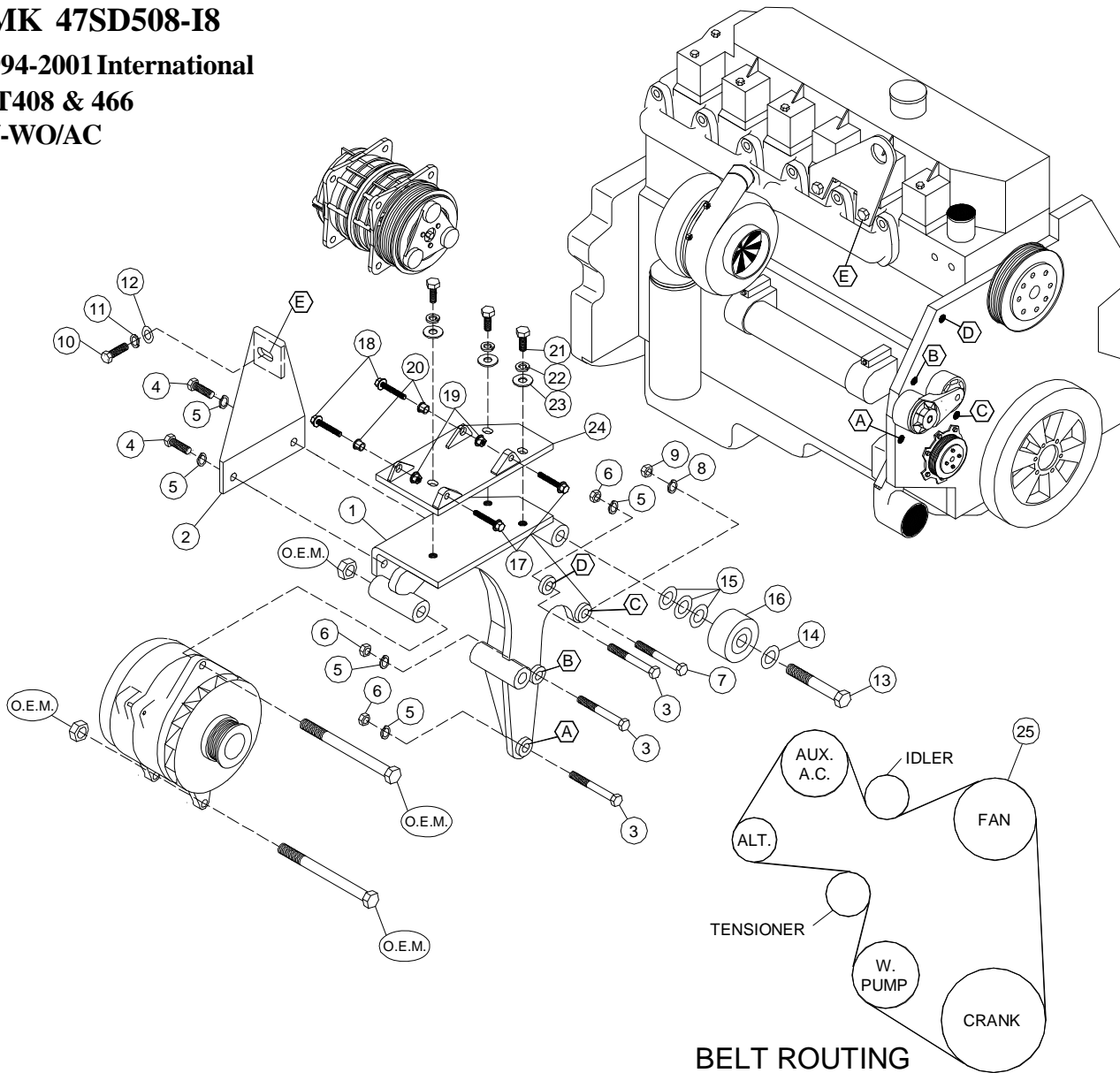
1. Disconnect the negative battery cable. Remove the 6-groove A/C belt (if equipped) and the 8-groove accessory belt. Disconnect the wires from the alternator, then remove the alternator from the bracket. Remove the four bolts holding the alternator bracket to the engine and remove the bracket. The bracket will not be reused.
2. Install the new bracket into the O.E.M. alt. bracket location A,B,C,D using bolts (3) with nuts (6) and lockwashers (5), and bolt (7) with nut (9) and lockwasher (8). Tighten bolts securely. It may be necessary to rotate the 45 degree heater hose fitting to clear the bracket. Remove the front bolt (E) from the engine lifting lug. Install the brace (2) onto the back of the bracket with two bolts (4) and lockwashers (5) and to the engine with bolt (10) with a flat and lockwasher (12,11) in location E. Tighten bolts evenly and securely.
3. Install the alternator onto the new bracket using the O.E.M. bolts. Connect the alternator wires. Install the plate adapter (24) onto main bracket (1) using bolts (21), lockwashers (22) and flatwashers (23). Install the aux. A.C. compressor onto the adapter plate with bolts (17,18), nuts (19) and slide bushings (20). Check alignment and adjust adapter plate as necessary. Install the flat idler (16) onto the bracket using bolt (13) and Lockwasher (14). Use the shim washers (15) to align the idler with the drive pulley and aux. air conditioner clutch pulley. Install the new belt onto the engine as per diagram. Install the O.E.M. A/C belt if equipped.
4. Reroute any hoses, wires, etc. that may be up against hot or moving parts. Reconnect the battery. Start the engine and check the belt to make sure it is tracking down the center of the idler. If it is not running true, adjust the idler in or out, or realign the air conditioner compressor.

IMK 47SD508-I8

1994-2001 International

DT408 & 466

W-WO/AC



BELT ROUTING

PARTS LIST

- | | |
|--------------------------|---------------------------------|
| 1. IMP 47SD508-I8 | 14. 5/8 LW (1) |
| 2. IMB 471 (1) | 15. IPW 14 (5) |
| 3. 10mm x 75mm 1.5 (3) | 16. Dayco 89005 Idler (1) |
| 4. 10mm x 25mm 1.5 (2) | 17. 10mm x 30mm Flange (2) |
| 5. 10mm LW (5) | 18. 10mm x 40mm Flange (2) |
| 6. 10mm 1.5 NUT (3) | 19. 10mm Flange Nut (2) |
| 7. 8mm x 70mm 1.25 (1) | 20. 1255-0090 Slide Bushing (2) |
| 8. 8mm LW (1) | 21. 3/8 x 1 NC (3) |
| 9. 8mm 1.25 NUT (1) | 22. 3/8 LW (3) |
| 10. 12mm x 35mm 1.75 (1) | 23. 3/8 FW (3) |
| 11. 12mm LW (1) | 24. IPA 47SD508 (1) |
| 12. 12mm FW (1) | 25. Belt Gates K080903 (1) |
| 13. 5/8 x 2 1/2 NC (1) | |