



CW MILL EQUIPMENT CO., INC.  
P.O. Box 246 • Sabetha, Kansas 66534  
(785) 284-3454 • FAX (785) 284-3601

## IMK51SD508-I8 Belt

2002-04 International  
7400  
DT466  
W-/AC

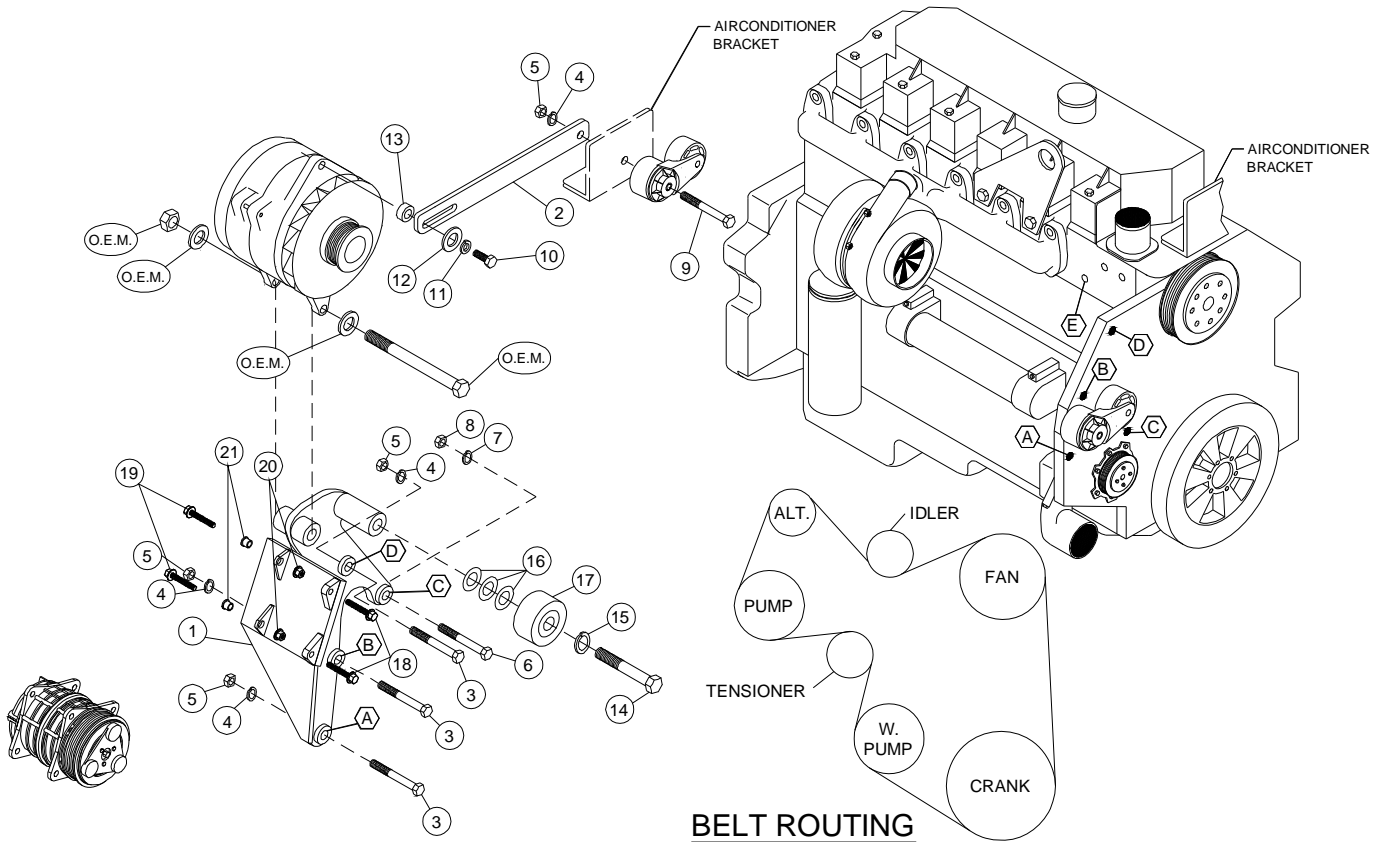
### INSTALLATION NOTES

---

1. Disconnect the negative battery cable(s). Drain the engine coolant, and remove the passenger side inner fenderwell. Remove the A/C belt, the accessory drive belt and accessory drive tensioner. Remove the alternator and alternator mounting bracket.
2. Disconnect the heater hose from the 45° fitting at location “E”. Remove the fitting. Apply sealant to the male threads of the 90° street fitting, and install it into the head at location “E” with the female opening pointed straight up. Apply sealant to the threads on hose fitting and install it in the 90° fitting. Shorten the heater hose as necessary. then reconnect it.
3. Using bolts (3), lockwashers (4) and nuts (5) at locations “A, B & D” and bolt (6) with lockwasher (7) and nut (8) at location “C”, install the aux. A.C. bracket (1) and tighten the bolts at all locations. Install the alternator with the OEM bolt, flatwashers and nut through the two ears at the bottom of the alternator. **DO NOT TIGHTEN.** Remove the bolt holding the A/C belt tensioner to the A/C bracket. Install bolt (9) at that location and tighten. Install brace (2) with lockwasher (4) and nut (5) to the tensioner bolt on the back side of the A/C bracket. Install bolt (10), lockwasher (11), flatwasher (12), and spacer (13) at the slotted end of brace (2). **DO NOT TIGHTEN.**
4. Install the aux. A.C. onto the new bracket(1) using the bolts provided in the kit. Use a straight edge to check alignment of A.C. with the other pulleys. Install idler (17) using bolt (14) with lockwasher (15). Use shims (16) to properly align the idler. Install the O.E.M. tensioner back to it’s original location. Install the drive belt and route it according to the belt diagram. Replace the O.E.M. A/C belt. Replace the engine coolant. Install the fenderwell and connect the battery(s). Run the engine to make sure the belt tracks properly on the pulleys.

**NOTE:** Check all engine compartment hoses and electrical wiring that may have been disturbed or rerouted during kit installation to be sure that hoses are not kinked, that they do not touch any high temperature items, and that they do not interfere with any linkage components.

**IMK51SD508-I8**  
**2002-04 International**  
**7400**  
**DT466**  
**W/AC**



**PARTS LIST**

- |  |                                 |
|--|---------------------------------|
| 1. IMP 48SD508 (1)                           | 13. 3/8 spacer w/ 1/2 I.D. (1)  |
| 2. IMB 511 (1)                               | 14. 5/8 x 2 1/2 NC (1)          |
| 3. 10mm x 75mm 1.5 (3)                       | 15. 5/8 LW (1)                  |
| 4. 10mm LW (4)                               | 16. IPW 14 (3)                  |
| 5. 10mm 1.5 Nut (4)                          | 17. IPCD-3.0 (1)                |
| 6. 8mm x 70mm 1.25 (1)                       | 18. 10mm x 30mm (2)             |
| 7. 8mm LW (1)                                | 19. 10mm x 40mm (2)             |
| 8. 8mm 1.25 Nut (1)                          | 20. 10mm Flange nut (2)         |
| 9. 10mm x 120mm 1.75 (w/50mm of threads) (1) | 21. 1255-0090 Slide Bushing (2) |
| 10. 1/2 x 1 1/2 NC (1)                       | 22. Dayco 5080830 (1)           |
| 11. 1/2 LW (1)                               | 23. 3400-8 90° Fitting (1)      |
| 12. 1/2 FW (1)                               | 24. 4404-12-8 Hose Barb (1)     |