



CW MILL EQUIPMENT CO., INC.
P.O. Box 246 • Sabetha, Kansas 66534
(785) 284-3454 • FAX (785) 284-3601

IMK 63SD508-8
2003-07 International
4200 Series, VT 365 Diesel
W-W/O AC, W/O Air Compressor

INSTALLATION NOTES

1. Install drive pulley (1) onto harmonic balancer using bolts (2) and lockwashers (3). Torque bolts to 40 ft.lbs..
2. Install bracket (4) on the front of the driver side head at locations "A", "B", and "C" with bolts (5) and lockwashers (3). Torque bolts to 40 ft.lbs..
3. Install aux. A.C. compressor onto the bracket with bolts (10,11), nuts (12) and slide bushings (13). Install tensioner (6) with bolt (7). Install belt (8) as shown in diagram.
4. Run engine and check for proper belt tracking and clearances.

IMK 63SD508-8

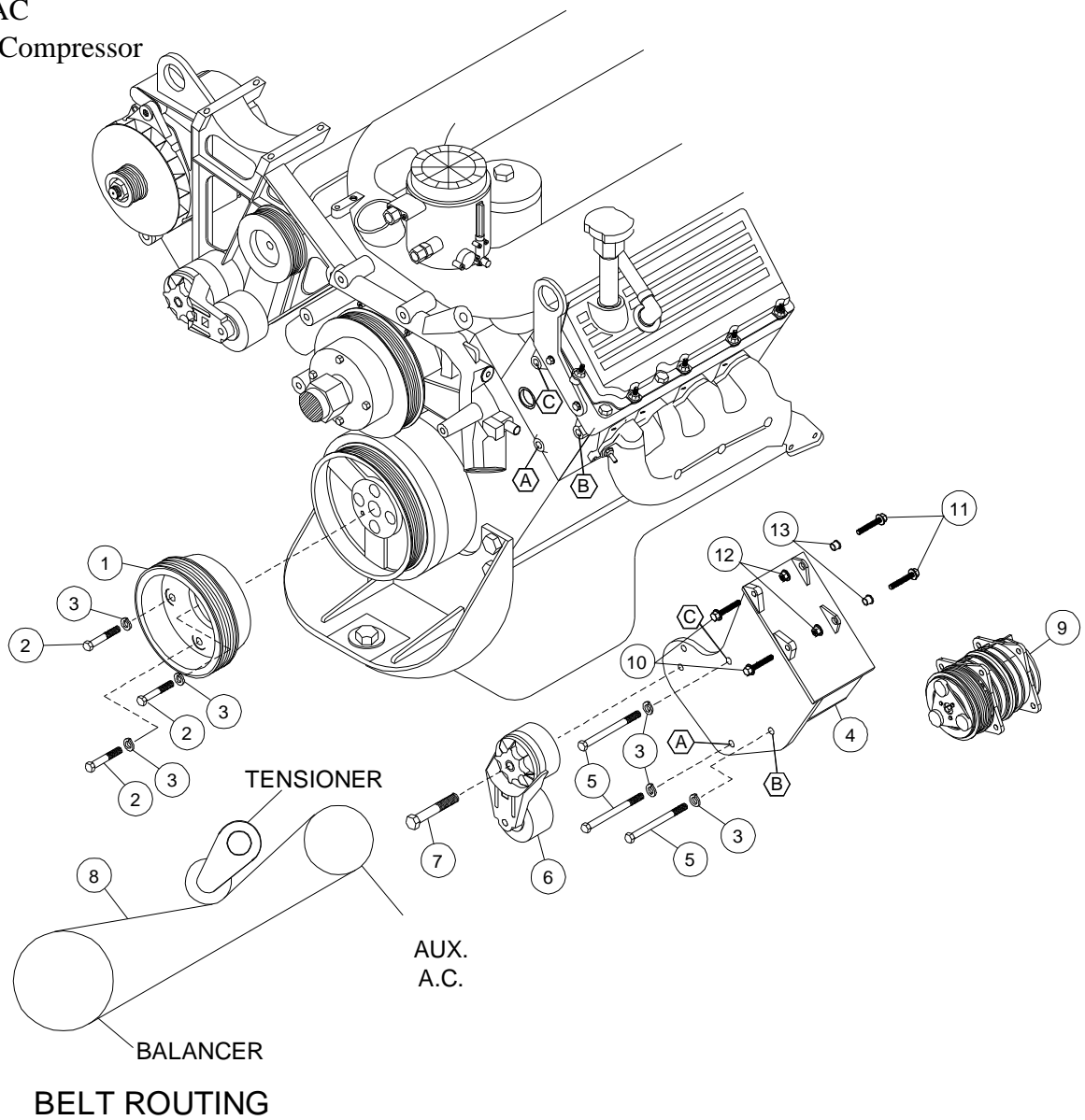
2003-07 International

4200 Series

VT 365 Diesel

W-W/O AC

W/O Air Compressor



PARTSLIST

- | | |
|-------------------------|----------------------------------|
| 1. FPC 688 (1) | 8. Dayco 5080620 |
| 2. 10mm x 30mm (3) | 9. Clutch pump (Sold Separately) |
| 3. 10mm LW (6) | 10. 10mm x 30mm Flange (2) |
| 4. IMB 631 (1) | 11. 10mm x 40mm Flange (2) |
| 5. 10mm x 150mm (3) | 12. 10mm Flange Nut (2) |
| 6. Tensioner 89200B (1) | 13. 1255-0090 Slide Bushing (2) |
| 7. 10mm x 75mm (1) | |