



CW MILL EQUIPMENT CO., INC.
P.O. Box 246 • Sabetha, Kansas 66534
(785) 284-3454 • FAX (785) 284-3601

MMK42SD508-6

**2002-2010 Mitsubishi
4.9 L**

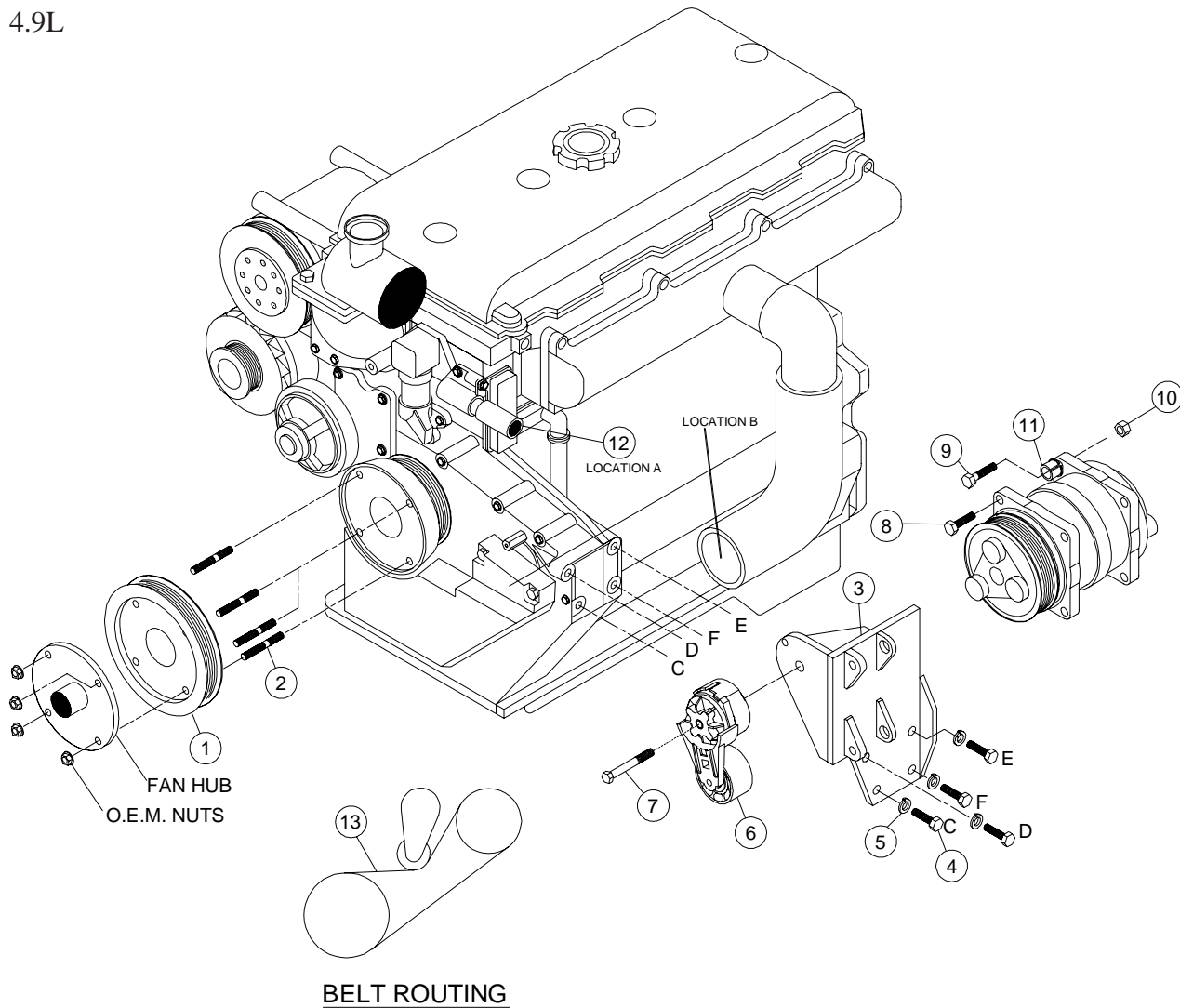
INSTALLATION NOTES

1. Disconnect the negative battery cable. Drain the engine coolant until coolant level is below the thermostat housing. Undo top radiator hose, remove fan and shroud. Remove heater hose (A). Remove turbo tube (B). Remove OEM studs from drive pulley.
2. Install new studs (2) in drive pulley. Install the shroud. Install pulley (1) and the fan with OEM nuts. Install the air conditioner bracket (3) with bolts (4) & lockwashers (5). Be sure to start all bolts before tightening any of the bolts. Reinstall turbo tube. Install replacement heater hose (12) using OEM hose clamps. Install air conditioner compressor with bolts (8) & (9), slide bushings (11) and nuts (10). Install belt tensioner (6) with bolt (7). Install belt (13).
3. Replace engine coolant and reconnect battery cable. Run engine and check for proper belt tracking and clearance of all moving parts.

MMK 42SD508-6

2002-2010 Mitsubishi

4.9L



PARTS LIST

1. MPC 426 (1)
2. 8mm x 45mm Stud (4)
3. MMP 42SD508-6 (1)
4. 10mm x 30mm (4)
5. 10mm LW (4)
6. 89200B (1)
7. 10mm x 75mm (1)
8. 10mm x 30mm Flange (2)
9. 10mm x 40mm Flange (2)
10. 10mm Flange Nut (2)
11. 1255-0090 Slide Bushing (2)
12. MMB 413 Hose (1)
13. 5060490 Dayco