



CW MILL EQUIPMENT CO., INC.
P.O. BOX 246 • Sabetha, Kansas 66534
(785) 284-3454 • FAX (785) 284-3601

CMK75A-8

2004-09 Chevy

C6500 & C7500

7.8 Duramax, 6 Cyl

W-W/O AC, W-W/O Air Brakes

NOTE: MUST USE SIDE PORTED PUMP.

INSTALLATION NOTES

1. Remove the OEM belt, fan (*fan nut has left hand threads*), fan shroud, fan pulley, fan bearing assembly, and the OEM fan assembly bracket. Install drive pulley (1) with bolts (2) and lockwashers (3).

NOTE: On trucks with a coolant line running through the fan hub bracket, the hose rerouting kit will need to be used. Drain the engine coolant. Remove the steel tube and threaded adapter from the engine just below the upper radiator hose. Using thread sealant, install adapter (30) and hose nipple (31) into the cylinder head where the adapter was removed. Tighten securely. Remove the bolt holding the hose to the fan hub bracket on the passenger side of the engine. Install hose (32) onto adapter (27) using one of the OEM hose clamps, then install the hose and adapter to the back of bracket (4) with bolt and lockwasher (28) & (29) at location "G". Once bracket (4) is installed, connect the hose on the passenger side of the engine to adapter (27) using the OEM bolt and fiber washers, and the hose on the drivers side to the fitting in the cylinder head using the other clamp. Route the hose so there are not kinks in it to slow down on cut off the coolant supply.

2. Install pump mounting bracket (4) with bolts (5), lockwashers (6) in locations "A", "B", and "C", bolt (7) with lockwasher (3) in location "D", and bolt (8) with lockwasher (3) in location "E". Tighten bolts securely.
3. Install the OEM fan hub assembly and fan pulley onto bracket (4) using OEM bolts. Remove ground strap bolt from location "F". Install brace (9) with bolts (10), lockwashers (3), and flatwashers (11). Reinstall ground strap with bolt (12), lockwasher (14) and flatwasher (13) at location "F". Start all bolts before tightening. Install fan spacer (17). Install the OEM belt back to its original routing.
4. Install tensioner (15) with bolt (16). Install pump (18) with bolts (19), flatwashers (20), lockwashers (21), and nuts (22). Install coil (23) and clutch (24) as per manufacturer's instructions. Install fan and fan shroud. Install belt (33) according to belt diagram.

CAUTION: Check all engine compartment hoses and electrical wiring that may have been disturbed or rerouted during kit installation to be sure that hoses are not kinked, that they do not touch any high temperature items, and that they do not interfere with any linkage components.

CMK75A-8

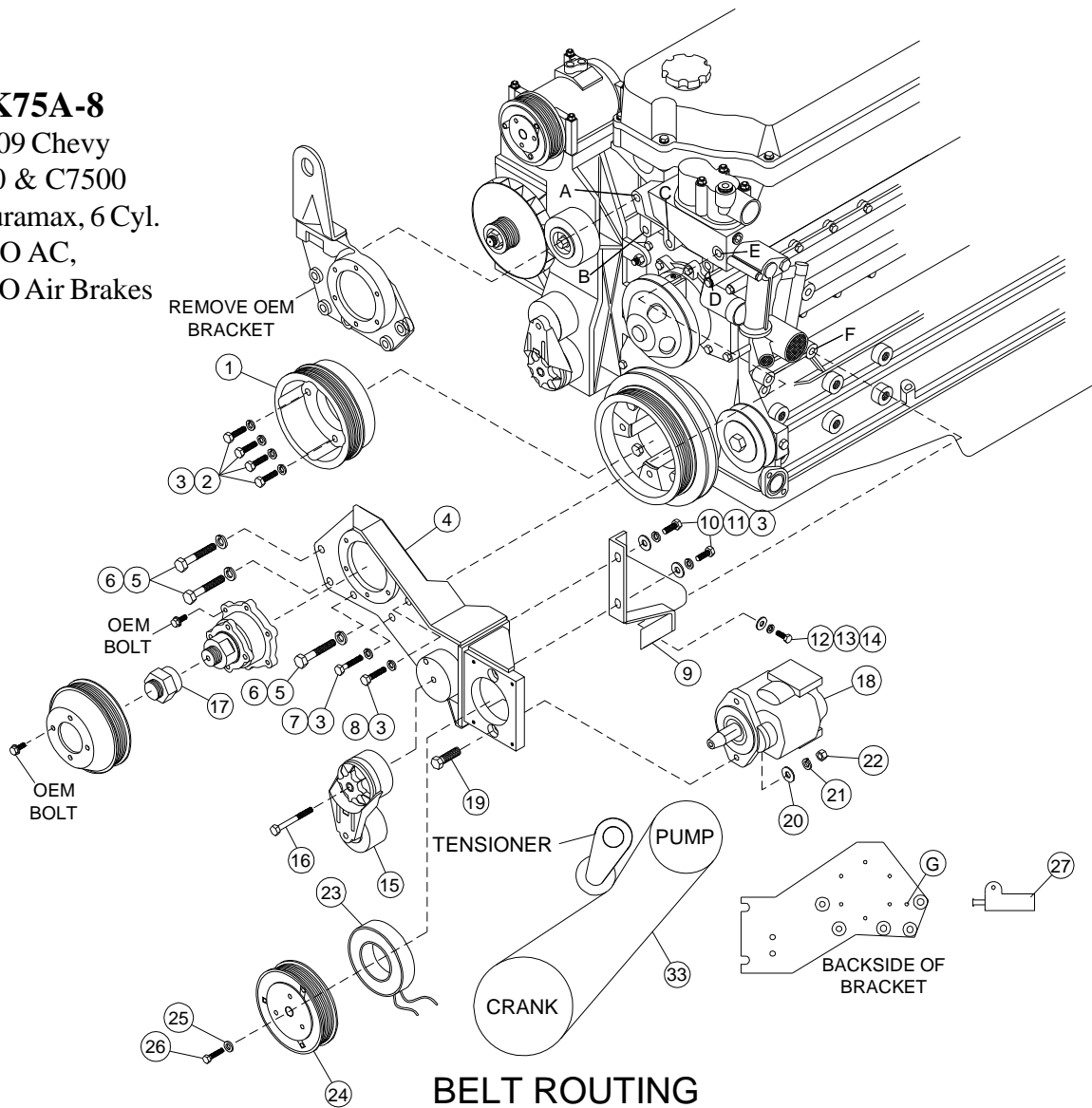
2004-09 Chevy

C6500 & C7500

7.8 Duramax, 6 Cyl.

W-W/O AC,

W-W/O Air Brakes



BELT ROUTING

PARTS LIST

- | | |
|--------------------------|---|
| 1. CPC 758 (1) | 18. Clutch Pump Assy. (1) (Sold Separately) |
| 2. 10mm x 30mm 10.9 (4) | 19. 3/8 x 1-1/2 Bolt (2) |
| 3. 10mm LW (8) | 20. 3/8 FW (2) |
| 4. CMP 75 (0-4) (1) | 21. 3/8 LW (2) |
| 5. 12mm x 55mm 10.9 (3) | 22. 3/8 Nut (2) |
| 6. 12mm LW (3) | 23. Coil (Sold Separately) |
| 7. 10mm x 45mm 10.9 (1) | 24. Cutch (Sold Separately) (T=8-10ft/lbs.) |
| 8. 10mm x 55mm 10.9 (1) | 25. FW-21MZ3487 (1) |
| 9. CMB 751 (1) | 26. Capscrew-19T38756 (1) |
| 10. 10mm x 25mm 10.9 (2) | 27. CMB 752 (1) |
| 11. 10mm FW (2) | 28. 1/4 x 3/4 NC (1) (Not Shown) |
| 12. 8mm x 25mm 10.9 (1) | 29. 1/4 LW (1) (Not Shown) |
| 13. 8mm FW (1) | 30. 5406-12-8 Thompkins (1) (Not Shown) |
| 14. 8mm LW (1) | 31. 4404-8-8 Thompkins (1) (Not Shown) |
| 15. 89200B Tensioner (1) | 32. 1/2 coolant hose (Not Shown) |
| 16. 10mm x 80mm 10.9 (1) | 33. Belt Dayco 5080545 |
| 17. FSK 52 (1) | |