



CW MILL EQUIPMENT CO., INC.  
P.O. Box 246 • Sabetha, Kansas 66534  
(785) 284-3454 • FAX (785) 284-3601

## CMK 38L3S-I6

1999-10 CHEVY/GMC  
2001-2011 Tahoe/Suburban  
4.8, 5.3, 6.0  
W-WO/AC

1. Disconnect negative battery cable. Remove the air intake duct. The fan and fan shroud may be removed to make installation slightly easier, but is not necessary. Remove the O.E.M. belt. Remove the metal bracket holding the hot wire junction block from the side of the alternator bracket and from the junction block (discard). Remove the three bolts at locations "A, B & C".
2. Position bracket (1) over the front of the O.E.M. alternator bracket and install bolts (6) with lockwashers (12) at locations "A, B & C". Tighten bolts securely. Install brace (2) with bolts (8 & 10), flatwashers (11), lock washers (12) and bushing (13) to the back of bracket (1) and to the engine at location "D". Tighten bolts evenly and securely.
3. Install the alternator onto the bracket with bolt (14), bushing (15) lockwasher (16) and nut (17). **DO NOT TIGHTEN.** Remove the O.E.M. alternator bolt that's closest to the drivers side fender. Install brace (4) with bolt (7) and lockwasher (12) into the O.E.M. alternator and bolt (18) with lockwasher (19) onto the add on alternator.  
**TIGHTEN ALTERNATOR BOLTS.**
4. Install the idler (5) with bolt (9), and bushing (3) into the bottom tapped hole on the front of the bracket if the truck has a 105 amp alternator, and the top hole if the truck is equipped with a 130 amp alternator. Install the new belt (20) onto the engine as shown on the illustration. Make sure the tensioner has adequate travel left once the belt is on. Replace the fan and fan shroud if removed. Replace the air intake duct and connect the battery. Secure any hoses or wires that may have been moved during installation. Run the engine and check for proper belt tracking.

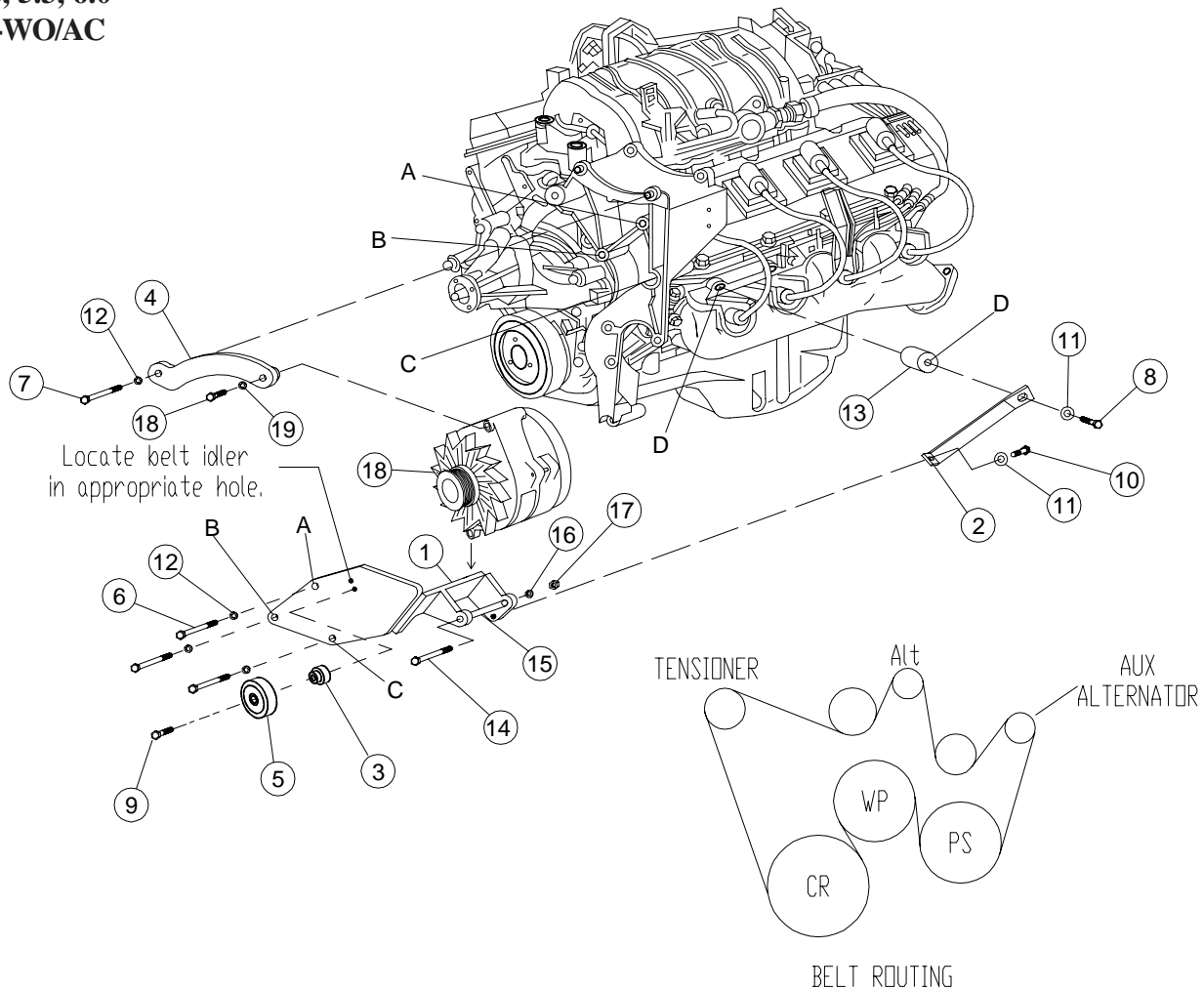
# CMK 38L3S-I6

1999-10 CHEVY/GMC

2001-2011 Tahoe/Suburban

4.8, 5.3, 6.0

W-WO/AC



## PARTS LIST

- |                           |                           |
|---------------------------|---------------------------|
| 1. CMB 380L3S (1)         | 12. 10mm LW (6)           |
| 2. CMB 381L3S (1)         | 13. 1" x 1.70 bushing (1) |
| 3. CMB 382 (1)            | 14. 7/16 x 5 1/2 (1)      |
| 4. CMB 383L3S (1)         | 15. 1" x 1.2" bushing (1) |
| 5. 89007 Dayco (1)        | 16. 7/16 LW (1)           |
| 6. 10mm x 140mm (3)       | 17. 7/16 Nut (1)          |
| 7. 10mm x 100mm (1)       | 18. 3/8 x 2 (1)           |
| 8. 10mm x 65mm (1)        | 19. 3/8 LW (1)            |
| 9. 10mm x 40mm Flange (1) | 20. 5061115 Dayco         |
| 10. 10mm x 25mm (1)       | 21. Alternator            |
| 11. 10mm FW (2)           | (Sold Separately)         |