



CW MILL EQUIPMENT CO., INC.
P.O. Box 246 • Sabetha, Kansas 66534
(785) 284-3454 • FAX (785) 284-3601

FMK4692V-8
1999-04 FORD TRUCK F-250-550
1997-12 FORD VANE-150-450
5.4L & 6.8L Triton
W-WO/AC

INSTALLATION NOTES

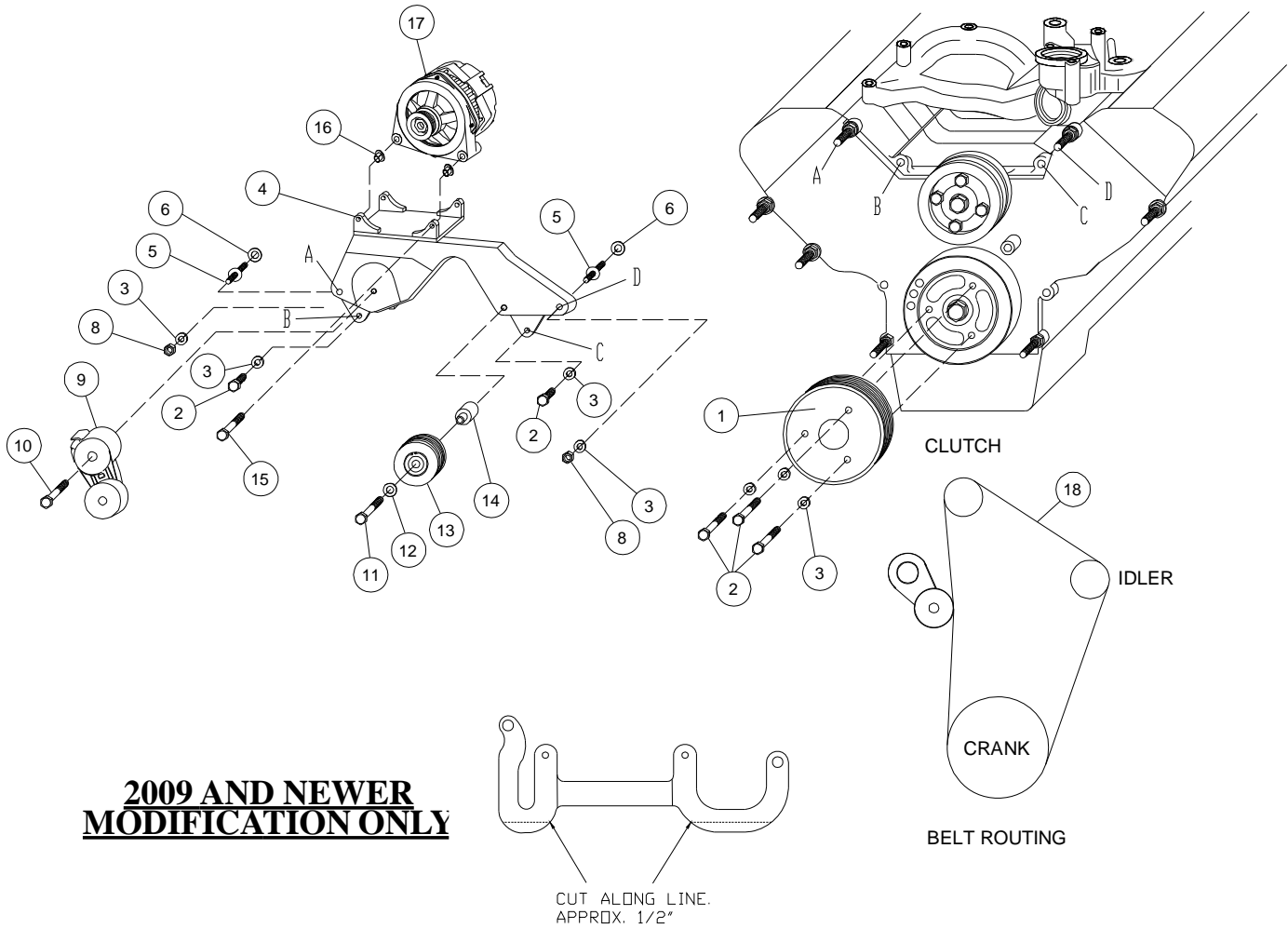
1. Disconnect the negative battery cable. On E series, remove the complete air cleaner assembly. Remove the fan and fan shroud. (Fan nut has right hand threads). Remove the O.E.M. serpentine belt and the flat idler on the passenger side of the engine. Remove the studs at locations "A & D" and install studs (5) with flatwashers (6). Torque studs to 35 ft/lbs.. Remove bolts at locations "B & C".
2. Install drive pulley (1) onto the harmonic balancer with bolts (2) and lockwashers (3). Torque bolts to 40 ft/lbs.. Install bracket (4) onto the studs at locations "A & D". Install bolts (2) with lockwashers (3) at locations "B & C", and nuts (8) with lockwashers (3) at locations "A & D". Tighten bolts and nuts evenly, then torque them to 35-40 ft/lbs. Install alternator (17) w/bolts (15) and slide bushings (16).
3. Replace the OEM idler back to its original location. Replace the OEM belt. Install alt belt tensioner (9) with bolt (10). Install the alt. belt onto the engine according to the belt diagram. Replace the fan and fan shroud. Check for proper clearances between the fan and the drive pulley. If installing on 6.8L fan spacer (7) or a 5.4L fan spacer (7a) is included in the kit. Only use fan spacer if there is not adequate clearance between the fan and add on components (approx. 3/16" minimum). Replace the air cleaner assembly if removed and connect the battery cable.

NOTE: Check all engine compartment hoses and wiring to insure they are not kinked, touching any high temperature item, or do not interfere with any linkage components.

NOTE: Due to OEM assembly tolerances, visually make certain that there is adequate clearance between fan and drive pulley.

NOTE: Always check belt alignment.

FMK4692V-8
1999-04 Ford Truck F-250-550
1997-12 Ford Van E-150-450
5.4L & 6.8L Triton
W-WO/AC



**2009 AND NEWER
MODIFICATION ONLY**

PARTS LIST

- | | |
|--------------------------|----------------------------------|
| 1. FPC 368 (1) | 12. 12mm FW (1) |
| 2. 10mm x 60mm (5) | 13. GPCD 8 (1) |
| 3. 10mm LW (7) | 14. FMB 391 Bushing (1) |
| 4. FMP 4692V-8 (1) | 15. 10mm x 75mm (2) |
| 5. 10107 1.5 ST (2) | 16. 1255-0090 (2) |
| 6. .080 shim (2) | 17. Alternator (Sold Separately) |
| 7. FSK6.8A (1) | 18. Belt Dayco 5080600 (1) |
| 7a. FSK 37R (1) | |
| 8. 10mm nut (2) | |
| 9. 8920236 Tensioner (1) | |
| 10. 12mm x 80mm (1) | |
| 11. 12mm x 65mm (1) | |