



CW MILL EQUIPMENT CO., INC.
P.O. Box 246 • Sabetha, Kansas 66534
(785) 284-3454 • FAX (785) 284-3601

FMK 46J180-8SB

99-04 Ford Truck F-250-550 Triton
97-09 Ford Van E-150-450 Triton
5.4, 6.8 Liter, W-WO/AC

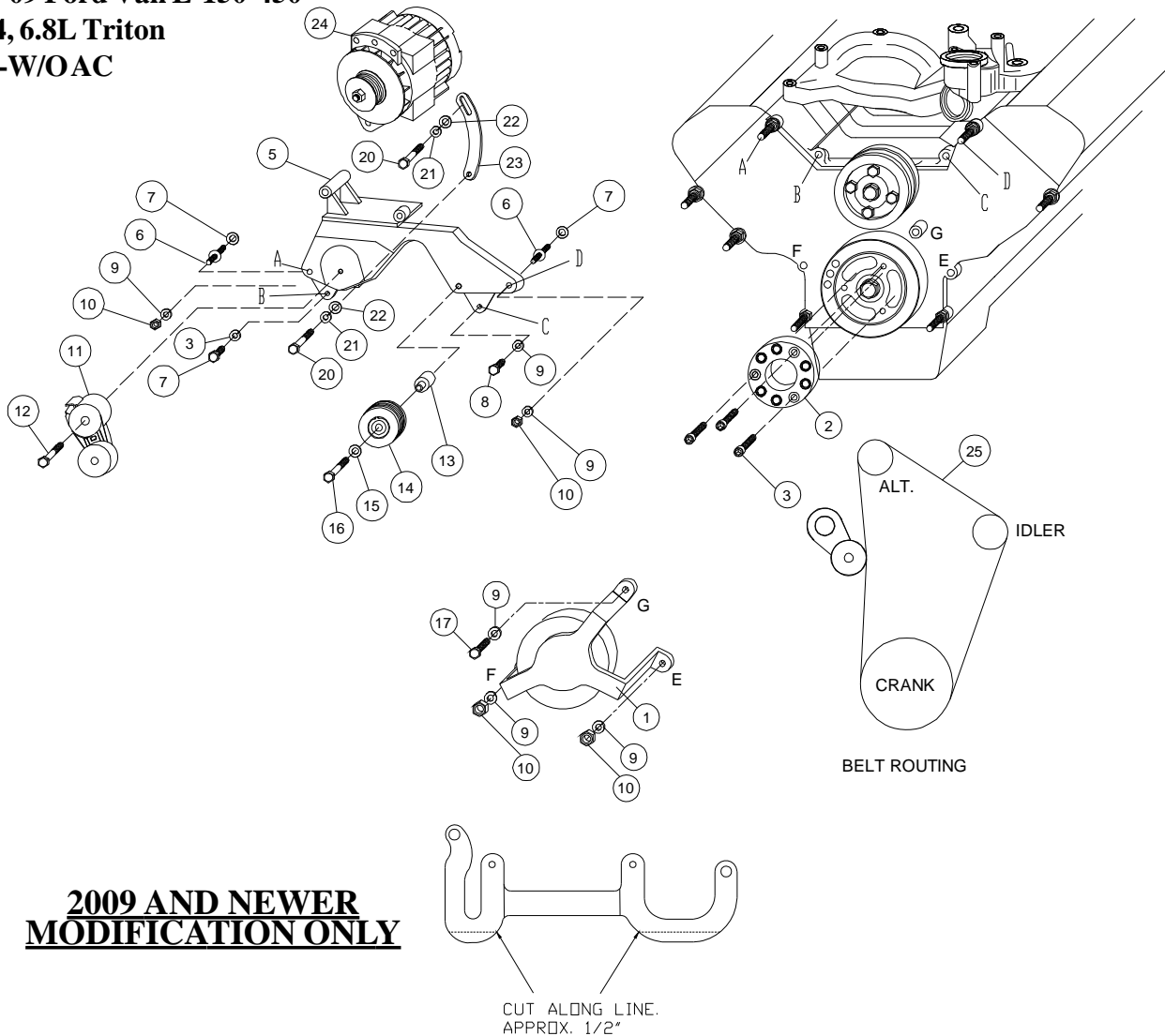
INSTALLATION NOTES

1. Disconnect the negative battery cable. On E-series remove the complete air cleaner assembly. Remove the fan and fan shroud. (Fan nut has right hand threads). Remove the O.E.M. serpentine belt and the flat idler on the passenger side of the engine. Remove the studs at locations "A & D" and install studs (6) with flatwashers (7). Torque studs to 35-40 ft/lbs.. Remove bolts at locations "B & C".
2. Install bracket (5) onto the studs at locations "A & D". Install bolts (8) with lockwashers (9) at locations "B & C" and nuts (10) with lockwashers (9) at locations "A & D". Tighten bolts and nuts evenly, then torque to 35-40 ft/lbs.. Install alternator (24) onto bracket (5) using bolts (18,20), LW's (21), FW's (22), slide (23), and nut (19).
3. Install the O.E.M. idler back to it's original location, and install the O.E.M. belt. Install the fan spacer nut (4), the pump tensioner (11) with bolt (12) and the grooved idler (14) with bushing (13), flatwasher (15) and bolt (16).
4. Install the drive adapter (2) onto the damper with bolts (3), torque bolts to 40-45 ft/lbs.. Install the belt onto the pulley with the belt on the inside of the legs at locations "E & F", and over the leg at location "G". Slide the pulley over the O.E.M. studs at locations "E & F", make sure the drive pins are in the nylon bushings, all three legs should touch their mounting locations without using the bolt or nuts to pull it on. Torque bolt (17) and nuts (10) to 35-40 ft/lbs.. Install the alt. drive belt (25).
5. Install the fan, fan shroud, and air cleaner assembly if removed. Reconnect the battery cable. Run the engine to make certain the belt is tracking properly.

NOTE: Check all engine compartment hoses and wiring to insure they are not kinked, touching any high temperature item, or do not interfere with any linkage components.

NOTE: Due to OEM assembly tolerances, visually make certain that there is adequate clearance between fan and drive pulley.

FMK 46J180-8SB
99-04 Ford Truck F-250-550
97-09 Ford Van E-150-450
5.4, 6.8L Triton
W-W/OAC



**2009 AND NEWER
MODIFICATION ONLY**

PARTS LIST

- | | |
|---------------------------|-------------------------|
| 1. FPC 458 Assembly (1) | 13. FMB 391 Bushing (1) |
| 2. FPA 45 Adapter (1) | 14. GPCD-8 (1) |
| 3. 10mm x 20mm SHCS (3) | 15. 12mm FW |
| 4. FSK 6.8A (1) | 16. 12mm x 65mm (1) |
| 4a.FSK37R (1) | 17. 10mm x 40mm (1) |
| 5. FMB 460A (1) | 18. 1/2 x 6 (1) |
| 6. 10107 1.5 ST (2) | 19. 1/2 Nut (1) |
| 7. .080 shim (2) | 20. 1/2 x 1-1/4 (2) |
| 8. 10mm x 60mm 10.9 (2) | 21. 1/2 LW (2) |
| 9. 10mm LW (7) | 22. 7/16 FW (1) |
| 10. 10mm Nut (4) | 23. J180B1 (1) |
| 11. 8920236 Tensioner (1) | 24. Alternator (1) |
| 12. 10mm x 80mm (1) | 25. 5080595 Belt (1) |