



CW MILL EQUIPMENT CO., INC.  
P.O. Box 246 • Sabetha, Kansas 66534  
(785) 284-3454 • FAX (785) 284-3601

## FMK 47J180-8SB

2005-2016 Ford F-250-550, 6.8L  
2008-2010 Ford F-250-550, 5.4L  
Triton 3-Valve  
W-W/O AC, W/Bearing Support

### INSTALLATION NOTES

1. Disconnect the negative battery cable. Drain the engine coolant. Remove the upper radiator hose and overflow hose from the radiator. Remove the air duct. Remove the fan and fan shroud. (Fan nut has right hand thread.)
2. Clean any dirt or rust from the damper then install the pulley drive adapter (1) onto the damper with bolts (2). Torque to 40 ft. lbs. Remove the nut and cable support from the stud at location "F". Bend or cut the cable support out of the way, then secure it with tie straps. Install the drive belt onto the pulley with the belt inside the legs at locations "E" and "F", and over the leg at location "G". Install the pulley assembly (3) onto the engine with lockwashers (4), nuts (5), and bolt (6). Torque nuts and bolt to 30-35 ft. lbs.
3. Remove the two nuts from the studs at locations "A" and "B". Remove the radio noise suppressors and torque the studs to 25 ft. lbs. **(IMPORTANT) Replace the radio noise suppressors back onto the studs.** Remove the bolt from the idler at location "C". If the heater hose at location "H" comes in contact with the bracket, cut off as indicated in the illustration. Expand the steel band holding the check valve. Push the check valve past the 90° bend and crimp the steel band back on the hose to secure the check valve. Reconnect the heater hose. The heater hose should now turn back toward the cab instead of up and then back. Re-route the wires that run across the front of the passenger side valve cover to allow the bracket to be installed without pinching any of the wires. Install the main bracket (7) onto the engine with the O.E.M. nuts at location "A" and "B", lockwasher (15) with bolt (14) at location "D", and lockwasher (15) with bolt (16) at location "C". Torque nuts and bolts to 25 ft. lbs.
4. Install idler (10) with bushing (13), flat washer (11), and bolt (12) onto the main bracket. Torque the bolt to 35-40 ft. lbs. Install alternator (25) w/bolts (17,20), nut (18), slide (19), LW's (21), and FW (22). Install the tensioner (8) with bolt (9). Torque to 25 ft. lbs. Install the drive belt (24) according to the belt diagram. Install the appropriate fan spacer nut.
5. **08 & 09 Models:** Replace the fan and remove the protective cardboard if used. From underneath pull the fan shroud back until it snaps into place. Remove the resonator from the air duct as shown in the illustration. Connect the battery cable.  
**05-07 Models:** Replace the fan and fan shroud. Install the radiator hose and overflow hose. Replace the air duct. Connect the battery cable and replace the engine coolant.
6. Make certain any wires that were disturbed during installation do not come in contact with any hot or moving parts. Run the engine and check for proper belt tracking. Adjust if necessary.

**NOTE:** On 6.8L V-10 trucks equipped with push button 4 wheel drive, an additional bracket kit is required to relocate the vacuum canister. Part # FMB474A

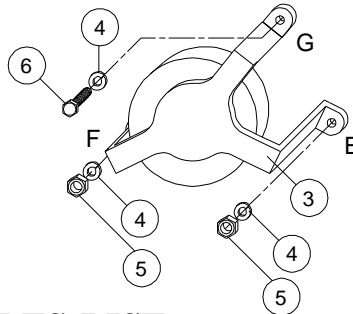
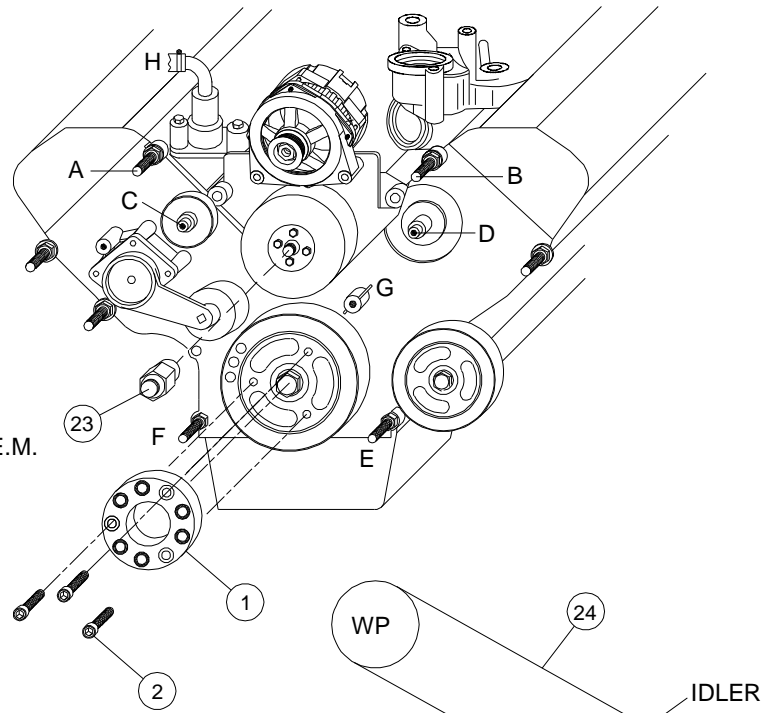
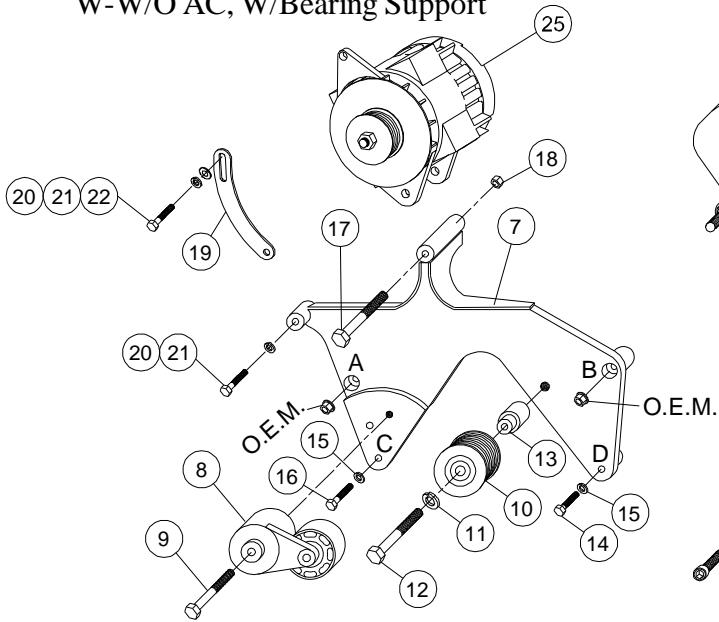
# FMK 47J180-8SB

2005-2016 Ford F-250-550, 6.8L

2008-2010 Ford F-250-550, 5.4L

Triton 3-Valve

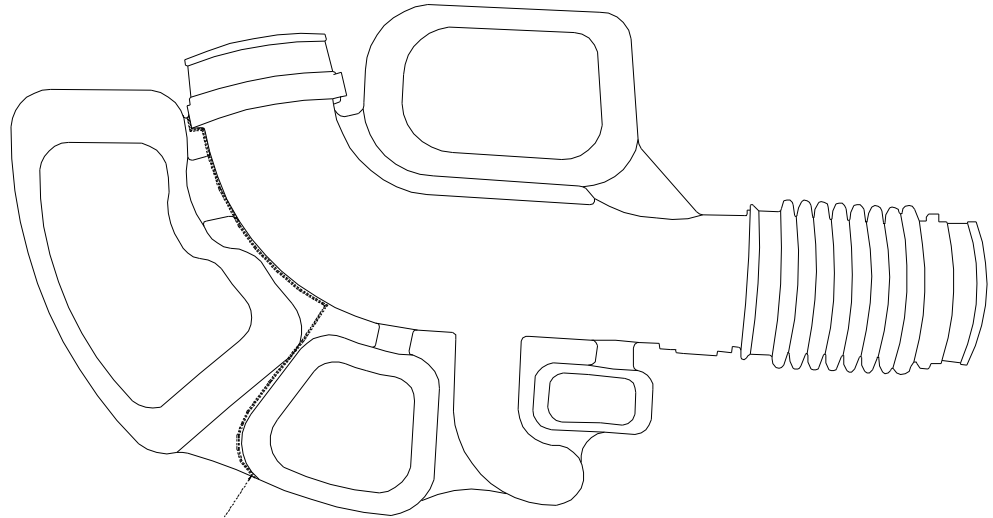
W-W/O AC, W/Bearing Support



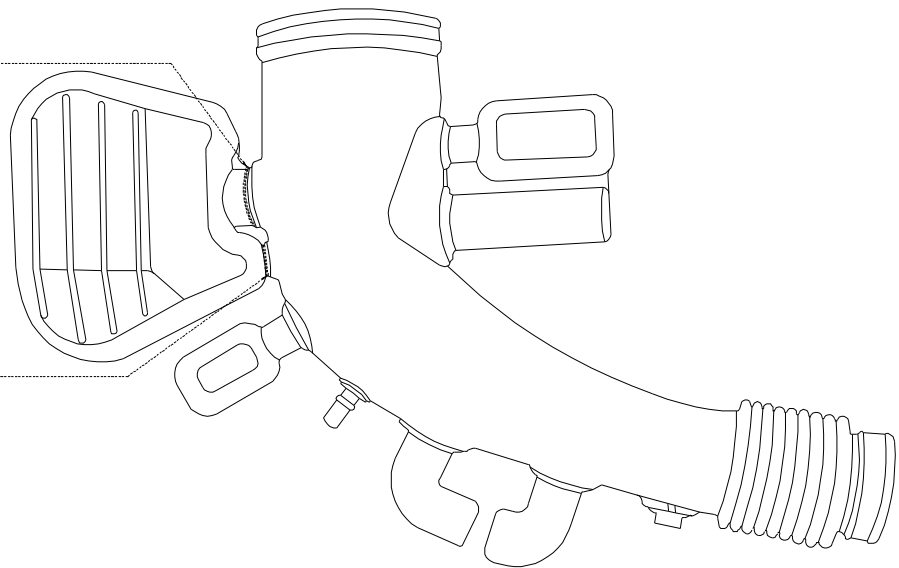
## PARTS LIST

- |                              |                                    |
|------------------------------|------------------------------------|
| 1. FPA 45 (1)                | 16. 8mm x 45mm (1)                 |
| 2. 10mm x 20mm SHCS (3)      | 17. 1/2 x 6 (1)                    |
| 3. FPC458 Assembly (1)       | 18. 1/2 Nut (1)                    |
| 4. 10mm LW (3)               | 19. J180B1 (1)                     |
| 5. 10mm Nut (2)              | 20. 1/2 x 1-1/4(2)                 |
| 6. 10mm x 40mm 10.9 Bolt (1) | 21. 1/2 LW (2)                     |
| 7. FMB47J180-8 (1)           | 22. 7/16 FW (1)                    |
| 8. 89200B Tensioner (1)      | 23. FSK37R (used on 5.4L only) (1) |
| 9. 10mm x 80mm (1)           | FSK 6.8A (used on 6.8L only) (1)   |
| 10. GPCD8 (1)                | 24. Dayco 5080655 (1)              |
| 11. 12mm FW (1)              | 25. Alternator (Sold Separately)   |
| 12. 12mm x 75mm (1)          | 26. Aluminum Plug 1012646 (5.4L)   |
| 13. FMB 473 (1)              | 1012647 (6.8L)                     |
| 14. 8mm x 35mm (1)           | 27. Rubber Grommet 1013038 (5.4L)  |
| 15. 8mm LW (2)               | 1007870 (6.8L)                     |

# **MODIFICATIONS SHEET**



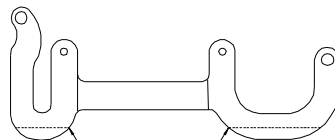
5.4L TRITON  
CUT HERE



6.8L TRITON  
CUT HERE

6.8L TRITON  
CUT HERE

**2009 AND NEWER  
MODIFICATION ONLY**



CUT ALONG LINE.  
APPROX. 1/2"