



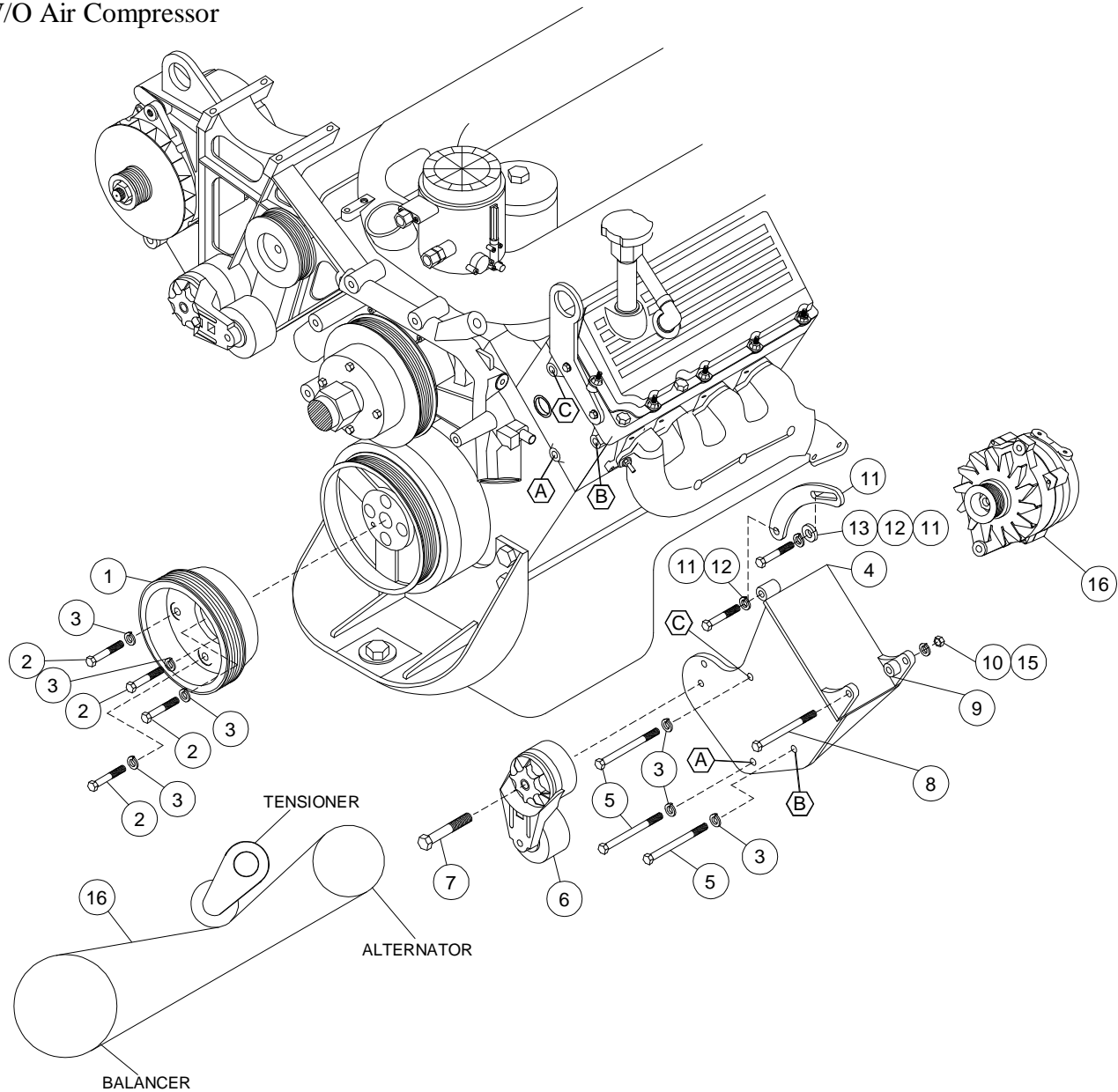
CW MILL EQUIPMENT CO., INC.
P.O. Box 246 • Sabetha, Kansas 66534
(785) 284-3454 • FAX (785) 284-3601

IMK 63L3S-8
2003-07 International
4200 Series, VT 365 Diesel
W-W/O AC, W/O Air Compressor

INSTALLATION NOTES

1. Install drive pulley (1) onto harmonic balancer using bolts (2) and lockwashers (3). Torque bolts to 40 ft.lbs..
2. Install bracket (4) on the front of the driver side head at locations "A", "B", and "C" with bolts (5) and lockwashers (3). Torque bolts to 40 ft.lbs..
3. Install alternator (16) with bolts (8,11), spacer (9), LW's (15,12), nut (10), FW (13), and slide (14). Install tensioner (6) with bolt (7). Install belt (8) as shown in diagram.
4. Run engine and check for proper belt tracking and clearances.

IMK 63L3S-8
 2003-07 International
 4200 Series
 VT 365 Diesel
 W-W/O AC
 W/O Air Compressor



BELT ROUTING

1. FPC 688 (1)
2. 10mm x 30mm (3)
3. 10mm LW (6)
4. IMP63L3S (1)
5. 10mm x 150mm (3)
6. Tensioner 89200B (1)
7. 10mm x 75mm (1)
8. 7/16 x 5-1/2 (1)

PARTSLIST

9. SP88-.500 (1)
10. 7/16 Nut (1)
11. 3/8 x 1-1/4 (2)
12. 3/8 LW (2)
13. 3/8 FW (2)
14. L3SB1 (1)
15. 7/16 LW (1)
16. Alternator (Sold Separately)
17. Dayco 5080600 (1)