



CW MILL EQUIPMENT CO., INC.
P.O. Box 246 • Sabetha, Kansas 66534
(785) 284-3454 • FAX (785) 284-3601

CMK 47L3S-8

2001-02 C&K 3500 HD

2003-09 4500 & 5500

For use W-WO AC / WO Dual Alternator /
Requires 8 Groove Clutch /
O.E.M. alternator should be on passenger side.

INSTALLATION NOTES

1. Disconnect the negative battery cable. Remove the plastic air intake tube. Remove the top half of the fan shroud and the fan. Remove the OEM belt, tensioner idler, and alternator from the engine. Remove the alternator bracket.
2. Remove the bolt and washer from the damper. Install the washer onto bolt (3). Using a mild grade of loctite install the six allen head set screws (2) into the drive pulley from the inside until they are flush with the outside of the pulley. Install the drive pulley into the damper using bolt (3). Tighten bolt (3) finger tight. Making sure the drive pulley pilot is engaged into the damper, turn the pulley counter clockwise until it hits against the damper spokes. Torque bolt (3) to 210 ft./lbs.. Tighten the allen head set screws in a crossing pattern at 10 in lbs., 10 ft./lbs., 15 ft./lbs. and then 20 ft./lbs.
3. Install the bracket onto the engine using bolts and lockwashers (6 & 6a) at locations (B,C & D). **DO NOT TIGHTEN**. Remove the steel bushings from the OEM alternator bracket and install them into the new bracket. Install the OEM alternator into the bracket with the OEM bolt at location (A) and bolt (5) at the other location. Tighten all bolts securely.
4. Install the OEM idler and tensioner onto the new bracket in their original locations. Install OEM belt. Install the new alternator onto the bracket with bolt (10), lockwasher (11), and nut (12) at the top and bolts (13), lockwashers(14), and flatwashers (15) with adjustment slide (9) at the bottom. **DO NOT TIGHTEN**. Install tensioner (8) with bolt (7) onto the bracket using the bottom alignment hole. Install the alternator belt (16) and swing the alternator out until the tensioner is about at mid travel when the tensioner is released. Tighten alternator bolts securely. **NOTE:** If the belt is too short to install, loosen the tensioner bolt enough to move the alignment pin to the top hole and retighten.
5. Install the fan, fan shroud and air intake tube. Turn the fan to make sure it clears the drive pulley and tensioner assembly. Connect the battery. Check for proper clearance of any hoses, wires, etc. that may come in contact with moving parts. Run the engine to make sure the belts are tracking properly.

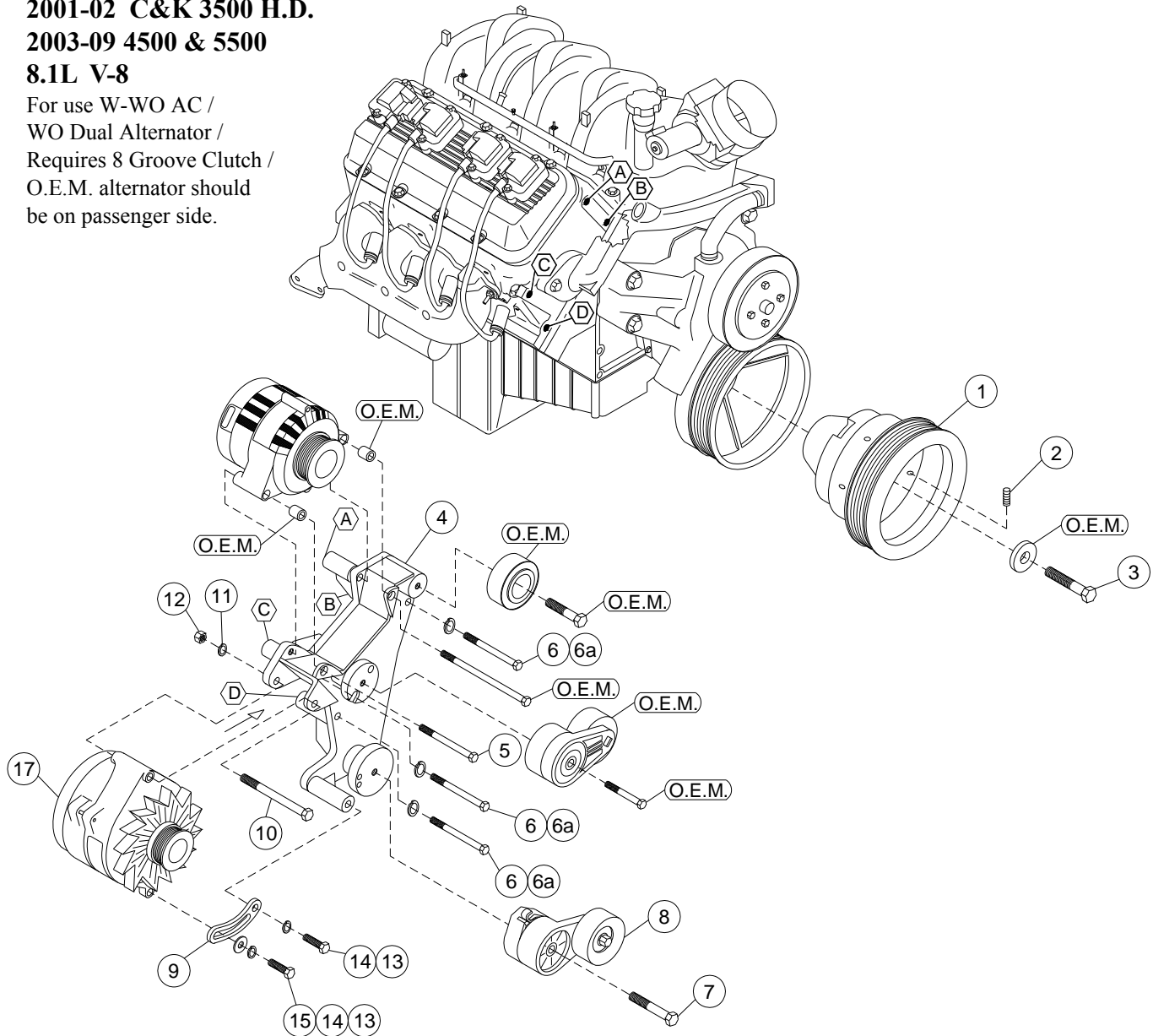
CMK 47L3S-8

2001-02 C&K 3500 H.D.

2003-09 4500 & 5500

8.1L V-8

For use W-WO AC /
WO Dual Alternator /
Requires 8 Groove Clutch /
O.E.M. alternator should
be on passenger side.



PARTS LIST

- | | |
|-----------------------------|--|
| 1. CPC 478A (1) | 10. 7/16 x 4 NC (1) |
| 2. 3/8 x 1 NC Set Screw (6) | 11. 7/16 LW (1) |
| 3. 16mm x 80mm 1.5 (1) | 12. 7/16 Nut (1) |
| 4. CMP 47L3S (1) | 13. 3/8 x 1 1/4 NC (2) |
| 5. 10mm x 80mm 1.5 (1) | 14. 3/8 LW (2) |
| 6. 10mm x 100mm 1.5 (3) | 15. 3/8 FW (1) |
| 6a. 10mm LW (3) | 16. Belt (Not Shown) (1)
Dayco 5080435 |
| 7. 12mm x 80mm 1.75 (1) | 17. Alt. Assembly (1)
(Sold Separately) |
| 8. Dayco 89217 Assembly (1) | |
| 9. CMB 471 (1) | |