

INSTALLATION NOTES

1. Disconnect the negative battery cable. On E series, remove the complete air cleaner assembly. Remove the fan and fan shroud. (Fan nut has right hand threads). Remove the O.E.M. serpentine belt and the flat idler on the passenger side of the engine. Remove the studs at locations "A & D" and install studs (5) with flat washers (6). Torque studs to 35 ft/lbs.. Remove bolts at locations "B & C".
2. Install drive pulley (1) onto the harmonic balancer with bolts (2) and lock washers (3). Torque bolts to 40 ft/lbs.. Install bracket (4) onto the studs at locations "A & D". Install bolts (7) with lock washers (3) at locations "B & C", and nuts (8) with lock washers (3) at locations "A & D". Tighten bolts and nuts evenly, then torque them to 35-40 ft/lbs. Install alternator (21) w/bolts (15,17), LW's (18), FW (19), nut (16), and slide (20).
3. Replace the OEM idler back to its original location. Replace the OEM belt. Install alt belt tensioner (9) with bolt (10). Install the alt. belt onto the engine according to the belt diagram. Replace the fan and fan shroud. Check for proper clearances between the fan and the drive pulley. If installing on 6.8L a fan spacer (22) is included in the kit. Replace the air cleaner assembly if removed and connect the battery cable.

NOTE: Check all engine compartment hoses and wiring to insure they are not kinked, touching any high temperature item, or do not interfere with any linkage components.

NOTE: Due to OEM assembly tolerances, visually make certain that there is adequate clearance between fan and drive pulley.

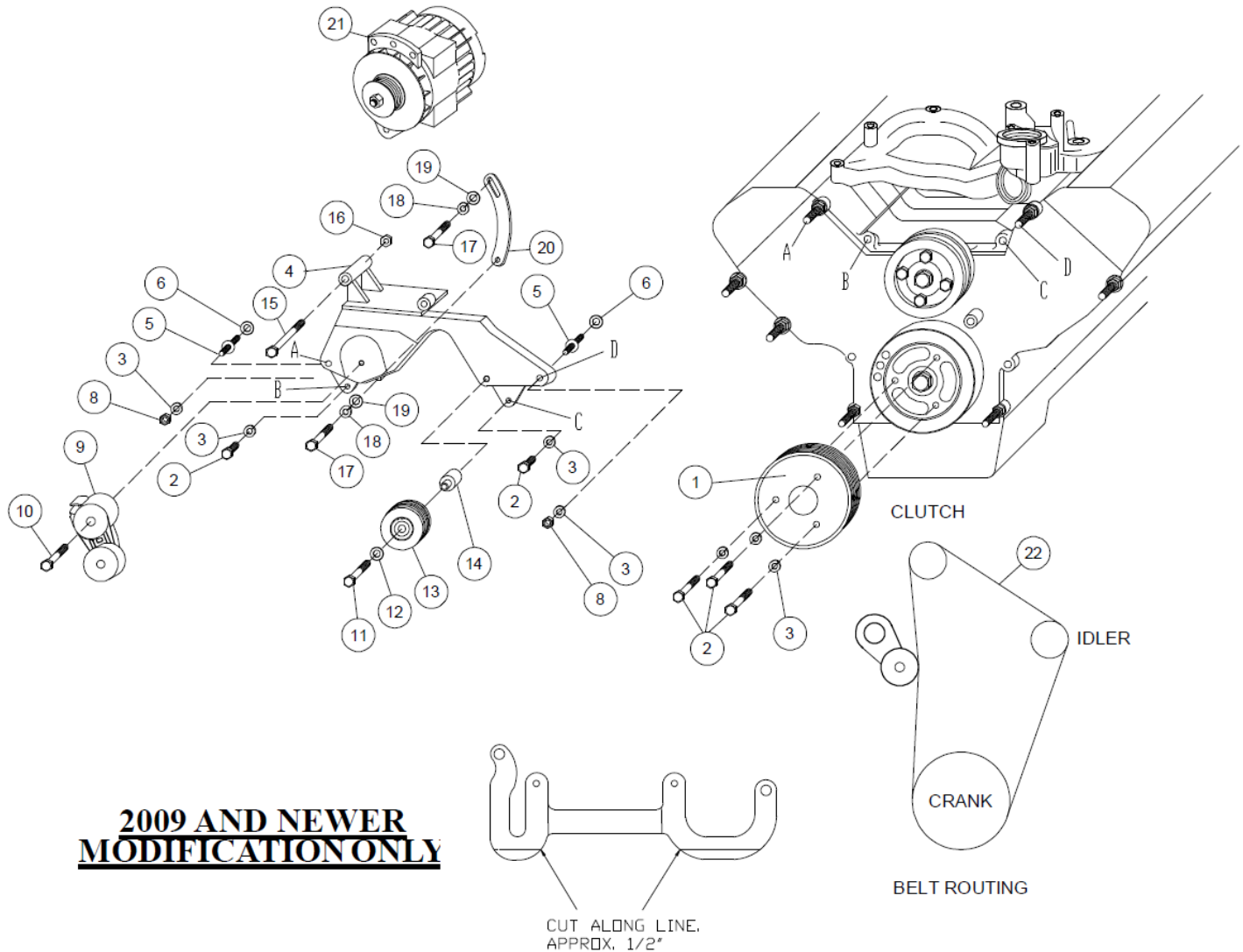
FMK46J180-8

1999-04 Ford Truck F-250-550

1997-19 Ford Van E-150-450

5.4L & 6.8L Triton

W-WO/AC



2009 AND NEWER MODIFICATION ONLY

PARTS LIST

- | | |
|--------------------------|----------------------------------|
| 1. FPC 368 (1) | 13. GPCD 8 (1) |
| 2. 10mm x 60mm (5) | 14. FMB 391 Bushing (1) |
| 3. 10mm LW (7) | 15. 1/2 x 6 (1) |
| 4. FMB 46J180 (1) | 16. 1/2 Nut (1) |
| 5. 10107 1.5 ST (2) | 17. 1/2 x 1-1/4 (2) |
| 6. .080 shim (2) | 18. 1/2 LW (2) |
| 7. FSK6.8A (1) | 19. 7/16 FW (2) |
| 8. 10mm nut (2) | 20. J189B3 (1) |
| 9. 8920236 Tensioner (1) | 21. Alternator (Sold Separately) |
| 10. 12mm x 80mm (1) | 22. Dayco 5080595 |
| 11. 12mm x 65mm (1) | |
| 12. 12mm FW | |