



CW Mill Equipment Co., Inc.
14 Commerce Drive Sabetha, KS 66534
Phone: (785) 284-3454
Fax: (785) 284-3601
Email: brackets@cwmill.com
Website: www.cwkits.com

VCK39SD508-6

2006-2020 Chevy G1500-4500 Express Van
2006-2020 GMC G1500-4500 Savana Van
4.8 5.3 6.0L V8 Gas w/-w/o A/C, w/o EGR Valve

Requires 6-Groove Clutch
For use w/ TM13 TM15 or TM16 Ear Mount Compressor

INSTALLATION NOTES

1. Disconnect the negative battery cable. Remove the air cleaner assembly. (Draining the engine coolant and removing the upper radiator hose will make removing the fan shroud easier, but is not necessary). Remove the bolts from the top half of the fan shroud and remove it. Remove the fan assembly. **Fan nut has right hand threads. NOTE: Only use approved tools to remove and install fan. If an air chisel or similar is used on the fan nut, water pump bearing or shaft failure can occur!**
2. Remove the engine drive belt and tensioner. Remove the engine oil fill tube, dipstick tube, and the bracket from the front of the cylinder head. Remove the bolt from the harmonic damper and install the new pulley and pulley adapter (1,2) with bolt (3) and set screws (5). Torque bolt (3) to 240 ft./lbs. Cross torque set screws (5) at 10 in./lbs., 5 ft./lbs., 15 ft./lbs., and then 25 ft./lbs.
3. Install the main bracket (7) onto the engine at the OEM tensioner location using bolts (12,13) and lock washers (11). Torque bolts to 30 ft. lbs. Install the angle brace (8) with bolts (14) into the front of the cylinder head and the back of the bracket. Tighten all four bolts lightly then torque them to 30 ft. lbs. Install the grooved idler (22) into the top hole of the main bracket with bolt (23) and spacer (21). Remove the three bolts from the alternator bracket just below the alternator. Install the new tensioner plate (9) with bolts (15). Install the tensioner (27) onto bracket (9) using bolt (26). **The belt needs to be behind the tensioner before it's tightened.** Install the OEM belt.
4. Install oil fill tube standoff (10) using bolts (24). Install the A/C compressor with bolts provided. Install the A/C tensioner and belt. Fan shroud may need to be trimmed to clear aftermarket components. Install fan spacer nut (28) and re-install fan. Check for adequate clearance. Replace fan shroud. Cut oil fill tube as shown in the illustration. Replace oil fill and dipstick tube using bolt (17), clamps (19,20), lock washer (16) and nut (18). Replace upper radiator hose and engine coolant if removed. Replace air cleaner assembly.
5. Check all hoses, wires, etc. that were disturbed during the installation to make sure they do not come in contact with any hot or moving parts. Run engine and check for proper belt tracking.

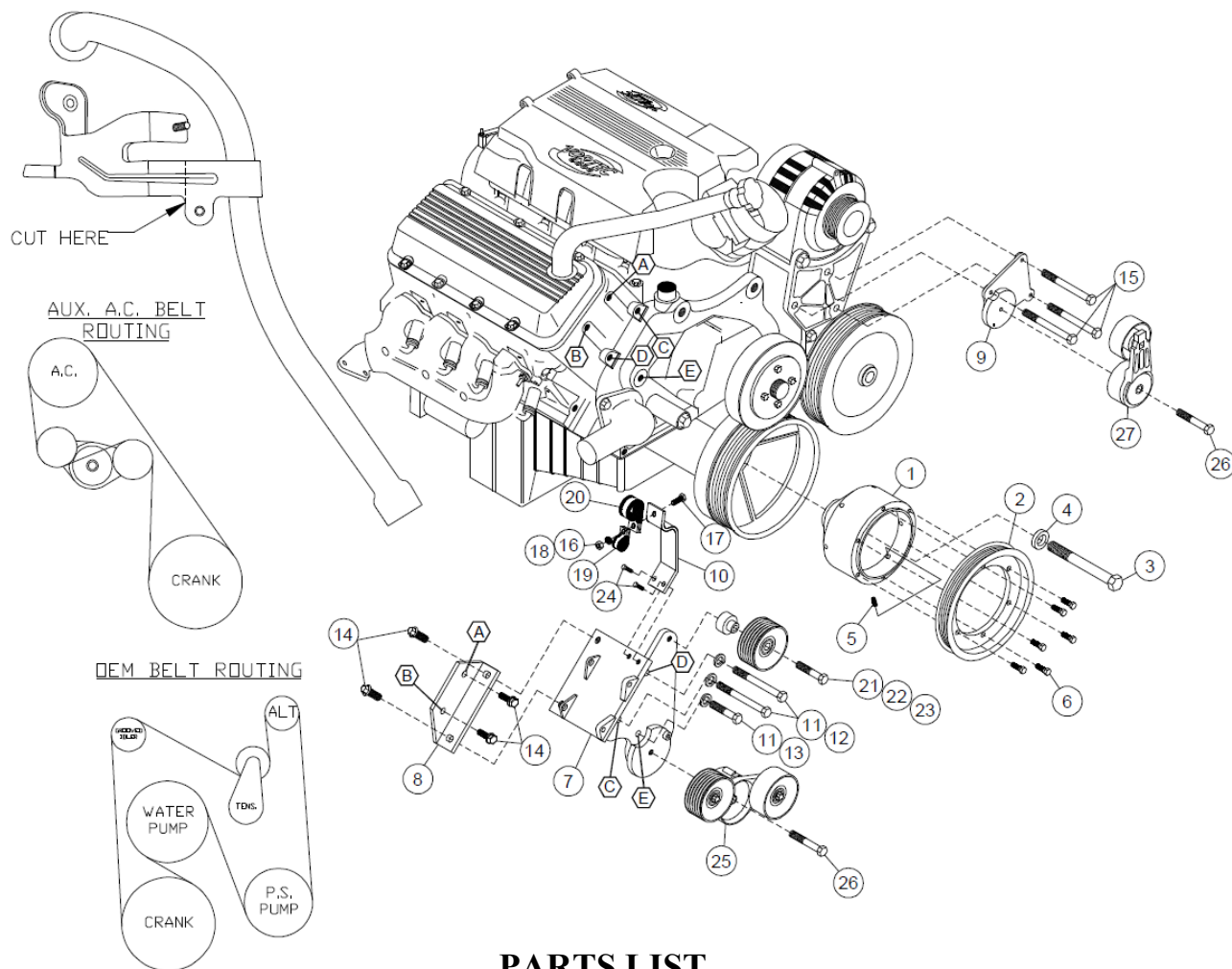


CW Mill Equipment Co., Inc.
 14 Commerce Drive Sabetha, KS 66534
 Phone: (785) 284-3454
 Fax: (785) 284-3601
 Email: brackets@cwmill.com
 Website: www.cwkits.com

VCK39SD508-6

2006-2020 Chevy G1500-4500 Express Van
 2006-2020 GMC G1500-4500 Savana Van
 4.8 5.3 6.0L V8 Gas w/-w/o A/C, w/o EGR Valve

Requires 6-Groove Clutch
 For use w/ TM13 TM15 or TM16 Ear Mount Compressor



PARTS LIST

- | | |
|-------------------------------|---------------------------------|
| 1. CPA382 (1) | 18. 1/4 NC (1) |
| 2. CPC386-7.5 (1) | 19. #14 Adel Clamp (1) |
| 3. 16mm x 140mm (1) | 20. #16 Adel Clamp (1) |
| 4. 16mm FW (1) | 21. VCMB394 (1) |
| 5. 8mm x 20mm Set Screw (6) | 22. 89051Dayco (1) |
| 6. 8mm x 25mm Flange Bolt (6) | 23. 10mm x 40mm Flange (1) |
| 7. VCMP39SD508-6 (1) | 24. 8mm x 12mm Flange (2) |
| 8. VCMB391 (1) | 25. 89254-IPCS20 (1) |
| 9. VCMB392 (1) | 26. 10mm x 55mm (2) |
| 10. VCMB393 (1) | 27. 89203-007 (1) |
| 11. 10mm LW (3) | 28. FSK39A Fan Spacer (1) |
| 12. 10mm x 90mm (2) | 29. K060539 (1) |
| 13. 10mm x 50mm (1) | 30. 10mm x 30mm (2) |
| 14. 10mm 20mm Flange Bolt (4) | 31. 10mm x 40mm (2) |
| 15. 10mm x 120mm (3) | 32. 10mm Flange Nut (2) |
| 16. 1/4 LW (1) | 33. 1255-0090 Slide Bushing (2) |
| 17. 1/4 x 3/4 (1) | |



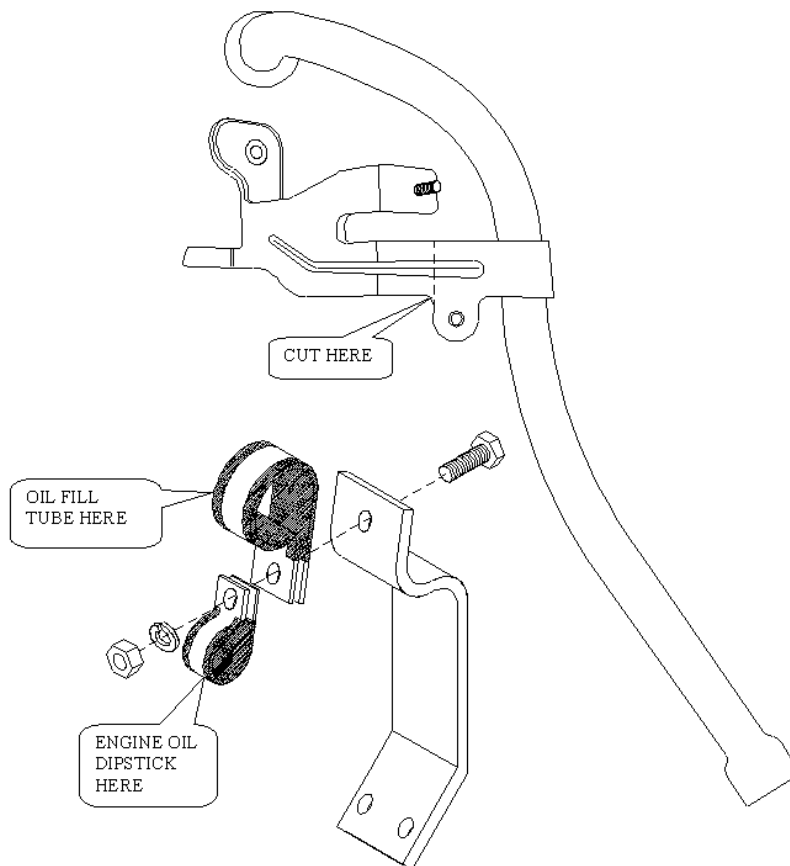
CW Mill Equipment Co., Inc.
14 Commerce Drive Sabetha, KS 66534
Phone: (785) 284-3454
Fax: (785) 284-3601
Email: brackets@cwmill.com
Website: www.cwkits.com

VCK39SD508-6

2006-2020 Chevy G1500-4500 Express Van
2006-2020 GMC G1500-4500 Savana Van
4.8 5.3 6.0L V8 Gas w/-w/o A/C, w/o EGR Valve

Requires 6-Groove Clutch
For use w/ TM13 TM15 or TM16 Ear Mount Compressor

MODIFICATIONS SHEET



Disclaimer: (1.) Due to the custom nature and variation of all add-on systems of this type, no complete system kits are offered by the manufacturer, and any group of parts marketed as a kit is limited to only the individually defined parts in that specific kit. The system designer's rotating accessory components are not included, offered, or fully known by the manufacturer. In addition to the absence of the rotating accessory system, other potential components such as additional clamps, brackets, wear liners, hardware, or other items that may be required by the system designer must be identified and supplied by the actual system designer. (2.) Due to vehicle manufacturer's assembly tolerances, production changes, and installation variances, it is the buyer's responsibility to insure adequate clearance for all components including space for and safe location of the fan, radiator, all lines, and wires. Check for possible movement, vibration, friction points, heat exposure and/or shifting of any and all components such as hoses, wires, and all other components including those that may otherwise be considered non-moving and/or unaffected by the installation (3.) The buyer is responsible for the entire installation of a mounting kit as the mounting kit is part of a custom process controlled by the buyer through their whole system design and directed installer as the installer evaluates, locates, routes, aligns, and tightens all components while determining if additional clamps, brackets, wear-liners, or other components may be required, beyond those included in the kit. Any additional items required, beyond those included in the kit, are to be provided at the expense of the buyer. (4.) the buyer is responsible for the development and communication of their whole system installation procedures, safety precautions, application, and use of the engine accessory mounting kit in their system, including efforts to maintain vehicle control and prevent pinch, wear, impact, and/or burn exposure on all hoses, wires, and other parts. (5.) The buyer is responsible for providing trained and experienced installation decision making with technical know-how to apply professional judgment that specifically applies to each individual installation. The buyers chosen installers must be qualified and experienced technicians that are familiar with the vehicle and accessory being mounted as well as the buyer's whole system design and installation procedures associated with the kit. (6.) The buyer is responsible for determining and achieving compliance to all regulatory issues that apply to the use of all products. (7.) The manufacturer reserves the right to make changes and/or improvements to any product at any time with or without notice.