



**IMK64SD508-8**  
**2008-2017 International Dura Star**  
**2011-2017 Terra Star**  
**MaxxForce 7 / V8 Diesel / 6.4L / 8 Groove Clutch**  
**W - W/O A/C**  
**W/O Air Compressor**

## **INSTALLATION NOTES**

---

1. Disconnect the negative battery cable. Install drive pulley(1) onto the engine damper with bolts(2) and lockwashers(3). Torque bolts to 35 ft. lbs.
2. Remove engine lifting lug from the front of the driver's side cylinder head.
3. Install auxiliary air conditioner bracket(4) with bolts(5) and lockwashers(3). Torque to 35 ft. lbs.
4. Install auxiliary air conditioner compressor with bolts (12,13), nuts (14) and slide bushings (15). Check belt alignment and install shims provided only if necessary. Tighten bolts securely.
5. Install idlers(9) using bolts(11), flatwashers(10) and idler spacers(8). Install belt tensioner(6) using bolt(7). Install the belt(16) as shown in the diagram on the back of this sheet. Reconnect the battery cable.

NOTE: Run engine and check for proper belt tracking.

# IMK64SD508-8

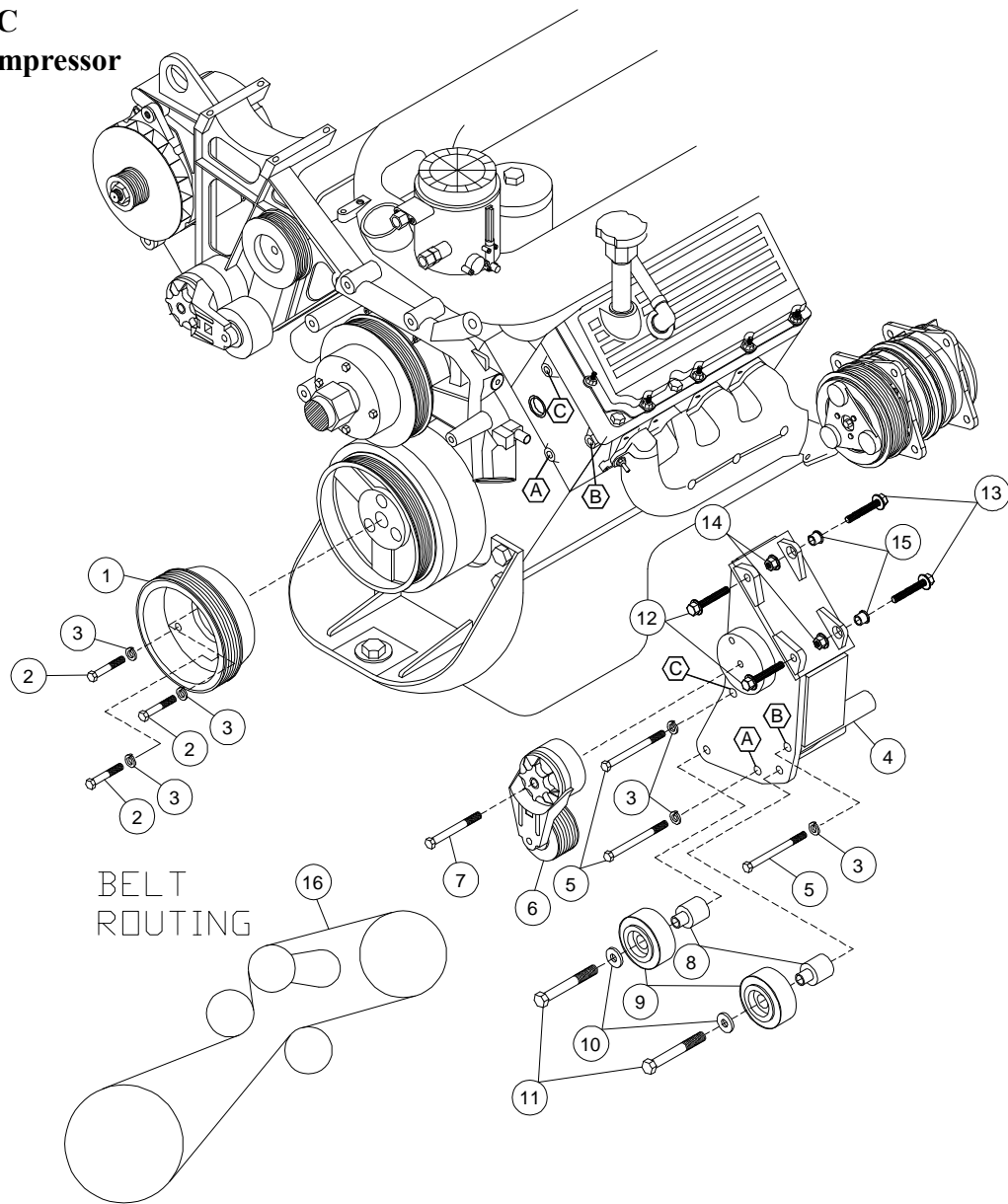
2008-2017 International Dura Star

2011-2017 Terra Star

MaxxForce 7 / V8 Diesel / 6.4L / 8 Groove Clutch

W - W/O A/C

W/O Air Compressor



## PARTSLIST

- |                                |                                 |
|--------------------------------|---------------------------------|
| 1. FPC2608 (1)                 | 9. 89016 Idler (2)              |
| 2. 10mm x 50mm Bolts (3)       | 10. 12mm FW (2)                 |
| 3. 10mm LW (6)                 | 11. 12mm x 75mm Bolt (2)        |
| 4. IMP64SD508-8 (1)            | 12. 10mm x 30mm Flange (2)      |
| 5. 10mm x 150mm (3)            | 13. 10mm x 40mm Flange (2)      |
| 6. 89438-053 Tensioner (1)     | 14. 10mm Flange Nut (2)         |
| 7. 10mm x 80mm Flange Bolt (1) | 15. 1255-0090 Slide Bushing (2) |
| 8. IMB641 (2)                  | 16. Dayco 5080650 (1)           |